

1996



LUMINA VAN



Lumina Van





Outside And Inside –
Lumina Van Appeals To Your Practical Side.

Lumina Van is designed and built to be perhaps the most practical vehicle you've ever driven. Innovations include a unique high-strength steel spaceframe with composite polymer body panels that not only resist minor dings and dents — they are totally rustproof. Before you step inside, take notice of the available power sliding door that makes for effortless access into the rear compartment.*

Once you get behind the wheel, you'll find the new standard 180-horsepower 3400 V6 provides an appealing balance of power and smoothness.

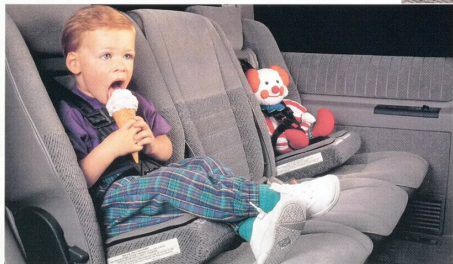
To fully appreciate Lumina Van's impressive versatility and practicality, you need a closer look inside.

Lumina Van shown in Dark Teal Metallic.

We Bent Over Backwards To Create The Most Flexible Interior.

The more uses you have for a van, the more useful you'll find Lumina Van's interior. Whether it's moving furniture across town or taking the family on a tour across the country, this is a van that lets you tailor its seating plan to suit your needs. The standard 7-passenger seating configuration features flip/fold and stow modular seats. As bucket seats, they are comfortable and supportive. When folded down they become useful tables with cupholders. Weighing just 14.5 kg (32 lb.) they can be easily removed to make way for a generous cargo bay.

That isn't the only example of how we've gone to extra lengths to make Lumina Van so practical. Convenient touches such as storage nets on the front seatbacks and a centre console with dual cupholders help make travelling more comfortable.



Available single or dual integral child seats provide secure seating for children, enhancing your convenience by eliminating the need to install and remove supplemental child seats.



Lumina Van's interior features a standard 7-passenger seating configuration, shown here with a modular seat folded down for use as a table.



Some of Lumina Van's most important features are the ones you'll probably never have to use.

Lumina Van is designed with a comprehensive package of safety features. You may never have to make an evasive manoeuvre on a wet or icy road, but the standard 4-wheel anti-lock braking system helps keep you in control by minimizing wheel lockup and skidding on most slippery surfaces. They also help you maintain steering control under hard braking. You likely will never be involved in a collision, but just in case Lumina Van has been designed to protect its occupants. A steel safety cage surrounds the passenger compartment, while side-guard door beams help protect against side impacts. A standard driver-side air bag protects the driver in certain moderate to severe frontal collisions*.

And to enhance your peace of mind there is a child-security locking feature on the sliding side door. In fact, the most important feature of Lumina Van is its solid sense of security.

*Remember to always wear safety belts even in vehicles equipped with air bags.



Lumina Van's high-strength steel spaceframe construction makes it an exceptionally rigid and durable vehicle. The ladder-type frame features full-length rails with cross-members for a stiff overall structure.



Lumina Van, shown with available two-tone paint in Medium Garnet Red Metallic over Light Gray Metallic.



Engineering That Helps You Get The Most Out Of Your Van.

There are a number of features that will impress you the first time you drive a Lumina Van. Settle into the comfort of the reclining front bucket seats. Immediately, you'll notice the enhanced visibility that is the result of the elevated seating positions. Once you pull out onto the road, you'll appreciate the smooth power of the 180-hp V6 engine. But Lumina Van is designed to impress you not just the day you drive it off the lot, but for many years to come. There are many engineering features that ensure Lumina Van will be among the most reliable vehicles in its class. That is proven by the fact that the first tune up isn't scheduled until 160,000 km*. Platinum-tipped spark plugs are designed for extended life. The DEX-COOL™ engine coolant and Dexron® III automatic transmission fluid are both designed to last 5 years or 160,000 km. You may not notice these features right away, but they help you get the most out of your Lumina Van down the road.

*Maintenance needs vary with different uses and conditions. See your owner's manual for more information.

REAR WIPER/WASHER.

A rear wiper with a fixed-interval delay and a washer system are standard for enhanced rear visibility in poor weather conditions.

"WALK-UNDER" LIFT-GATE.

Lumina Van's rear lift-gate lifts easily to provide a generous walk-under height and unobstructed access to the cargo area.

BUMPER-LEVEL LOADING.

A flat, bumper-level cargo floor helps make cargo loading easy – even heavy items slide right in.

STAINLESS-STEEL EXHAUST.

A durable, corrosion-resistant, standard stainless-steel exhaust system is designed to last years longer than conventional systems.

IMPRESSIVE TOWING CAPACITY.

Lumina Van can tow up to 1361 kg (3000 lb.) when properly equipped. An available automatic rear level control suspension helps keep the vehicle at the designed ride height, even when towing or carrying a heavy load.

15" ALL-SEASON TIRES.

Standard P205/70R15 all-season steel-belted radials contribute to wet weather traction and a quiet ride.



HIDDEN ANTENNA.

The completely invisible radio antenna is integrated into the roof structure, eliminating the possibility of antenna vandalism or car wash damage.

SOLAR-RAY WINDSHIELD GLASS.

The specially-tinted windshield glass helps keep the interior cool and reduces glare for increased visibility. The tinted glass also helps protect the interior from damaging ultraviolet rays from the sun.

SLEEK AND EFFICIENT.

The smooth aero shape contributes to Lumina Van's ability to cut through the air, increasing fuel efficiency and reducing wind noise. Extensive standard insulation also helps shut out engine and road noise.

STANDARD 3400 V6 ENGINE.

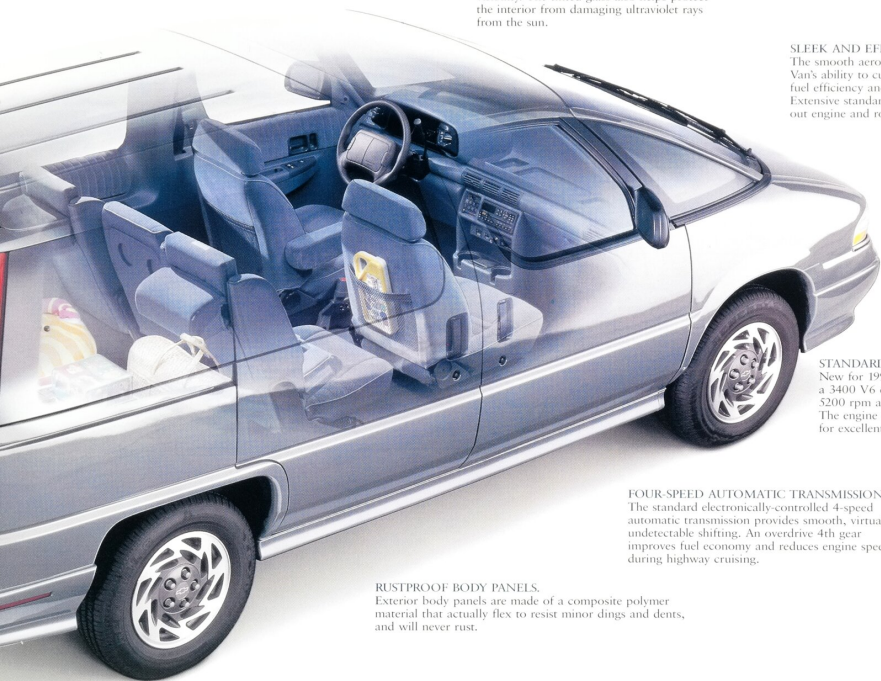
New for 1996, all Lumina Vans are equipped with a 3400 V6 engine that produces 180 horsepower at 5200 rpm and 205 lb.-ft. of torque at 4000 rpm. The engine features Sequential-Port Fuel Injection for excellent drivability and efficiency.

FOUR-SPEED AUTOMATIC TRANSMISSION.

The standard electronically-controlled 4-speed automatic transmission provides smooth, virtually undetectable shifting. An overdrive 4th gear improves fuel economy and reduces engine speed during highway cruising.

RUSTPROOF BODY PANELS.

Exterior body panels are made of a composite polymer material that actually flex to resist minor dings and dents, and will never rust.



Lumina Van

S P E C I F I C A T I O N S

STANDARD AND OPTIONAL EQUIPMENT

	LUMINA CARGO VAN	LUMINA PASSENGER VAN
SAFETY & SECURITY		
Air bag – driver-side	S	S
Brakes – anti-lock braking system (ABS VI), 4-wheel	S	S
Brake/transmission shift interlock feature	S	S
Door lock – sliding side door, child-security	S	S
Headlamps – Daytime Running Lamps, automatic light control	S	S
MECHANICAL		
Battery – Delco Freedom II	S	S
Brakes – power, front disc/rear drum	S	S
Drive – front-wheel	S	S
Engine – 3.4 litre 3400 V6 with SFI	S	S
Engine block heater	S	S
Exhaust system – stainless steel	S	S
Frame – steel, ladder under body design	S	S
Steering – power, rack-and-pinion	S	S
Suspension – front independent/rear semi-independent	S	S
Transmission – 4-speed electronically-controlled automatic with overdrive	S	S
EXTERIOR		
Antenna – integrated in roof design	S	S
Body panels – polymer composite, resist dents, dings and rust	S	S
Bumpers – body-colour	S	S
Glass – solar-control windshield, Soft-Ray all other windows	S	S
Glass – flip-out side glass, middle and rear windows	–	S
Headlamps – composite halogen	S	S
Mirrors – dual, left remote, right manual with fold-and-stow feature	S	S
Mouldings – lower aero ground effects	–	S
Paint – base-coat/clear-coat	S	S
Side door – sliding, 432 mm (17 in.) step-in height	S	S
Tires – P205/70R15 all-season blackwall	S	S
Wheels – 15" x 6" steel, Bolt-on wheel covers	S	S

	LUMINA CARGO VAN	LUMINA PASSENGER VAN
INTERIOR		
Armrests – driver and front passenger seats	0	S
Air conditioning – front, manual with electronic controls (with CFC-free refrigerant)	S	S
Cargo convenience net	–	S
Cupholders – lower centre instrument panel and rear quarter upper area	S	S
Console/ette – roof, front overhead reading lamps	–	S
Defogger – electric rear-window	S	S
Fabric – Scotchgard™ Protector (included on seat fabrics, door trim, floor carpeting and mats)	S	S
Floor mats – front and rear, carpeted	–	S
Head restraints – front seat, adjustable	0	S
Instrumentation – analogue cluster (includes speedometer, coolant temperature, battery voltage and fuel gauges)	S	S
Lamps – front ashtray, centre dome at B and C-pillars, door courtesy and glove compartment	S	S
Lamps – stepwell, front overhead reading lamps in console/ette and rear liftgate	–	S
Mirrors – visor vanity, left and right covered	–	S
Radio – Delco AM/FM stereo, seek/scan, clock	S	S
Radio speakers – 2-speaker sound system	S	–
Radio speakers – 4-speaker sound system, extended range rear	–	S
Seat – 4-way manual driver	–	S
Seats – cloth reclining front bucket seats with 3-centre row and 2-rear row removable bucket seats (7-passenger capacity); includes rear air distribution system and rear heater	–	S
Seats – vinyl non-reclining front bucket seats	S	–
Storage – lockable under-dash storage, lower instrument panel glove compartment, rear quarter lower left closed storage and rear quarter upper open storage	S	S
Windshield wipers – 2-speed, variable delay (intermittent), wet-arm washers	S	S
Wiper/washer – rear-window, 2-speed with fixed delay (intermittent)	S	S



Lumina Cargo Van is a real work-horse. It has a large cargo-carrying capacity, with 3188 L (112.6 cu. ft.) of space. It is easy to load or unload your cargo even in tight quarters with a low step-in height, wide-opening sliding side door and bumper-level cargo floor. New for 1996, the highly-efficient 180-horsepower 3400 V6 provides all the power you need.



The standard 3400 V6 engine is new for Lumina Van in 1996. It produces 180 horsepower, making it one of the most powerful engines available in a front-wheel drive van. Sequential-Port Fuel Injection contributes to the engine's smoothness and efficiency.



The available power sliding side door provides convenient, hands-free operation. The door can be operated from the driver's seat, at the passenger-side door pillar, or with the available remote keyless entry module.



Standard centre- and rear-row modular seats are easily removed, weighing only 14.5 kg (32 lb.) each. The seats also fold upward and stow forward to create added cargo space without having to be removed.

PREFERRED EQUIPMENT GROUP PACKAGES

	LUMINA PASSENGER VAN		
	1SB	1SC	1SD
Cruise control – electronic	•	•	•
Door locks – automatic power (includes rear power tailgate release)	•	•	•
Mirrors – dual, left and right power remote with fold-and-stow feature	•	•	•
Steering column – Tilt/Wheel™, adjustable	•	•	•
Glass – solar-control, deep-tinted rear and side	•	•	•
Keyless entry system – remote with programmable unlock feature	•	•	•
Radio – Delco AM/FM stereo, seek up/down, auto-reverse cassette tape player, clock	•	•	•
Windows – power, driver's express-down feature	•	•	•
Seat – 6-way power driver	•	•	•
Tires – P205/70R15 all-season touring blackwall	•	•	•
Wheels – 15" x 6" Sport cast-aluminum	•	•	•

SELECTED ADDITIONAL INDIVIDUAL OPTIONS

	LUMINA CARGO VAN	LUMINA PASSENGER VAN
	Trailer Towing Package – includes heavy-duty cooling system, trailer wiring harness and heavy-duty signal flasher	–
Air conditioning – front and rear (with CFC-free refrigerant)	–	0
Child seats – one integral	–	0
Child seats – two integral	–	0
Door locks – automatic power (includes rear power tailgate release)	0	–
Glass – solar-control, deep-tinted rear and side (rear only on Cargo van)	0	0
Keyless entry system – remote with programmable unlock feature	–	0
Luggage carrier – roof-mounted	–	0
Paint – custom, two-tone	–	0
Radio – Delco AM/FM stereo, seek up/down, auto-reverse cassette tape player, clock	0	0
Radio – Delco AM/FM stereo, seek/scan, compact disc player, clock	–	0
Seat – 6-way power-driver	–	0
Seats – cloth reclining front bucket seats	0	–
Side door – power, sliding with remote open/close feature	–	0
Suspension – rear, electronic load leveling (includes accessory inflator kit)	–	0
Tires – P205/70R15 all-season touring blackwall	–	0
Wheels – 15" x 6" cast-aluminum	–	0
Windows – power, driver's express-down feature	–	0



The floor carpeting, cloth seats and cloth door trim panels are all mill-treated with stain-resistant Scotchgard™ Fabric Protector for easy cleanups.



A standard driver-side air bag is designed to enhance protection in certain moderate to severe frontal collisions. Remember to always wear safety belts, even in vehicles equipped with air bags.



A 6 m (20 ft.) air hose allows you to inflate tires and recreational items such as footballs or an air mattress. It is included with the optional automatic load leveling suspension, as is a convenient auxiliary electric power outlet.



Air conditioning is standard on all 1996 Lumina Vans. For added cooling for center and rear row passengers, there is available rear air conditioning that includes a rear panel-mounted control.



An available remote keyless entry system allows you to lock and unlock the doors and open the rear lift-gate from up to 6 m (20 ft.) away. The remote system can also operate the available power sliding side door.

SPECIFICATIONS

ENGINE	
Type	3.4L 3400 V6 with SFI
Horsepower	180 @ 5200 rpm
Torque	205 @ 4000 rpm
TOWING	
3.4L 3400 V6	3.29 final drive ratio 1361 kg (3000 lb.) ¹ or 1089 kg (2400 lb.) ² * maximum gross trailer weight ¹

DIMENSIONS, MM (IN.)

Wheelbase	2788 (109.8)
Length	4863 (191.5)
Width	1878 (73.9)
Height	1670 (65.7)
Front tread	1503 (59.2)
Rear tread	1559 (61.4)

INTERIOR, MM (IN.)

	FRONT	2ND ROW ¹	3RD ROW ¹
Head room	996 (39.2)	991 (39.0)	960 (37.8)
Leg room	1016 (40.0)	917 (36.1)	935 (36.8)
Shoulder room	1540 (60.6)	1504 (59.2)	1580 (62.2)
Hip room	1410 (55.5)	1402 (55.2)	1060 (41.7)

CAPACITIES/WEIGHT

Cargo, L (cu. ft.)	
- 2nd & 3rd row seats removed	3188 (112.6)
- 3rd row seats removed	1809 (63.9)
- All seats in position (7-passenger)	538 (19.0)
Fuel tank, L (gal.)	76 (16.7)
Curb weight (estimated), kg (lb.)	1527 (3366) Cargo Van 1672 (3686) Passenger Van

¹ Trailer towing for Passenger Van, maximum trailer weight applies with no more than two people. Maximum gross trailer weight with Cargo Van is 907 kg (2000 lb.). Includes weight of trailer, cargo, passengers and equipment. All towing recommendations are subject to change. Trailer tongue load should be 10% of the maximum trailer weight but should not exceed the load rating specified for that vehicle, engine or hitch combination.

² Maximum trailer weight applies with up to six people. Includes weight of trailer, cargo, passengers and equipment. All towing recommendations are subject to change. Trailer tongue load should be 10% of the maximum trailer weight but should not exceed the load rating specified for that vehicle, engine or hitch combination.

³ With V52 Trailer Towing Package only, without V52 maximum trailer weight is 907 kg (2000 lb.)¹; 635 kg (1400 lb.)² and tongue load is 91 kg (200 lb.)¹; 64 kg (140 lb.)².

⁴ Lumina Passenger Van only.



Every new GM car and truck is backed by the GM TOTAL™ Warranty (3 years/60,000 km, whichever comes first) which covers complete vehicle repairs, including parts and labour, to correct any defects in material or workmanship occurring during the warranty period. The GM TOTAL™ Warranty requires no deductible. Tires are included. Warranty features include towing, no-cost warranty transfer, and 6-year/160,000 km (whichever comes first) corrosion protection coverage and 8-year/130,000 km (whichever comes first) coverage on catalytic converters and powertrain control modules (PCM). Regular maintenance is not included. See your dealer for terms of this limited warranty.



When you drive away in your new 1996 GM car or truck, the security and convenience of round-the-clock Roadside Assistance is available via a toll-free number (available anywhere in Canada or the United States). During the warranty period, whenever a problem may occur, your Roadside Service Advisor is just a phone call away. Whether it's lock-out assistance, a jump start, a flat tire change, fuel delivery or towing assistance, simply call 1-800-268-6800 and we'll be there to get you on the road again without charge.



Your GM dealer will offer Courtney transportation while your 1996 GM vehicle is serviced at your GM dealership for repairs covered under the 3-year/60,000 km GM TOTAL™ Warranty. See your GM dealer for full details. (Includes public transportation or shuttle service for same-day repairs and loaner or rental service for overnight repairs.)



General Motors Acceptance Corporation (GMAC for short) is a General Motors company that caters specifically to help GM customers like yourself to finance their new vehicles. You can arrange GMAC financing right in your GM dealer's showroom, and the terms of your arrangement can be tailored to fit your particular needs. It's a convenient, flexible alternative to a conventional bank loan.



GM SMARTLEASE is simply an alternative to traditional financing. SMARTLEASE lets qualified customers pay for the portion of the vehicle that is used, rather than paying for the entire vehicle as you would with traditional financing. Consider these SMARTLEASE benefits: Low front-cost, affordable monthly payments, drive more vehicle for your money, drive a new car more often, limited maintenance and repair expense, no resale risks or trade-in hassles and a guaranteed option-to-purchase price when your lease ends. Most important, there are no surprises with SMARTLEASE. Leasing doesn't have to be a mystery. See your dealer about the benefits of SMARTLEASE. Or call 1-800-32-SMART.



Turn your dream into a reality. With the GM Visa® Card, your dream of owning a new GM car or truck can quickly become a reality. Every time you make a purchase with the GM Visa Card, you earn 5% of that purchase which you can apply to the purchase price or lease down payment on your next new GM car or truck. Earn up to \$3500 without having to do anything other than charge your usual purchases to your GM Card.

Plus, when you make a purchase with your GM Visa Card at any one of the GM Card Partners, you earn an additional 5%. And there's no limit to how much you can earn with the Partners.

What's more, there is no annual fee. To receive an application or for full terms and conditions, please see your local GM Dealer, TD Branch or call 1-800-461-3279.

Up to \$350 per Cardholder per or maximum of \$3500 over 7 years. Subject to GM Card Program Rules.
*TD and GM are licensed users of MasterCard.



If you or your passenger(s) have a physical disability which prevents you from driving or riding in a factory equipped vehicle, find out about the GM Mobility Program for Persons with Disabilities. You may be eligible for reimbursement of up to \$1000 (GST included) for adaptive equipment you may require for your 1996 GM vehicle. Your GM dealer can also set up complete GMAC financing for you. Beyond that, your GM dealer can provide you with lists of qualified driver assessment centres and mobility equipment installers. Call this toll-free number for more information: 1-800-GMDRIVE (TDD users, 1-800-263-3830).



Get \$750 off! If you're a recent graduate from a recognized college or university, you may qualify for an additional \$750 off on the purchase or lease down payment of the new GM vehicle of your choice. Anyone graduating from a 3-year university degree program, a 2-year college program or a 3-year CEGEP/D.E.C. program (Technique) between May 1, 1993 and December 31, 1996 can take part. To get your degree, see your GM dealer for full details.



GMPP coverage provides you with "Peace of Mind" protection from repair costs (parts and labour), as well as many associated expenses that may occur to your vehicle beyond the GM TOTAL™ Warranty period. Whether you're purchasing or leasing your GM vehicle, there's a GMPP coverage level and plan item to suit your budget and driving needs. Be sure to ask your GM dealer about the many benefits you receive through your purchase of the General Motors Protection Plan, the only Extended-Service Plan backed by the resources and commitment of General Motors.



The expert choice. You may wish to customize your vehicle with features that are not available as factory-installed options. If so, ask your sales representative if the desired item is available as a dealer-installed GM Accessory. GM provides GM TOTAL™ Warranty coverage for dealer-installed GM Accessories.



Buying a new vehicle is one of the most important decisions you can make. Naturally, you want to get the best possible value from your purchase. That's why regular maintenance is essential. Not only does it help your vehicle run better and last longer, it also enhances your resale or trade-in value. So you end up getting better fuel economy and a greater return on your investment.

Fitting routine maintenance into your busy schedule can be difficult. Now, GM Goodwrench Service Plus makes it easier, providing complete one-stop shopping for all your routine maintenance needs. Everything from lube, oil and filter to exhaust, and from shocks and struts to tire rotation. All at one convenient location, with GM-trained technicians who really know your GM vehicle and how to do the job right at upfront, competitive prices.

Whenever you see the GM Goodwrench Service Plus sign, it's your guarantee of the best quality work at a competitive price. We invite you to discover GM Goodwrench Service Plus - Expert Service and Honest Prices. GM Goodwrench Service Plus is available at authorized participating GM dealers.



It's good to know, when you travel long distances, that there are hundreds of GM dealers in Canada, each one ready to provide you with professional service and genuine GM parts. You can phone the GM Customer Communication Centre toll-free at 1-800-263-3777 (English) or 1-800-263-7854 (French) (TDD users, 1-800-263-3830) to talk with trained experts regarding any General Motors product or service problem you may have. The centre is open Monday through Friday, 7:30 a.m. to 11:30 p.m. EST.

A Word About This Brochure

We have tried to make this brochure as comprehensive and factual as possible. We reserve the right, however, to make changes at any time, without notice, in prices, colours, materials, equipment, specifications, models and availability. Since some information may have been updated since the time of printing, please check with your Chevrolet dealer for complete details.

A Word About Engines

Chevrolets are equipped with engines produced by different operating units of GM, its subsidiaries or suppliers to GM worldwide.

A Word About Assembly

Chevrolets are assembled by different operating units of General Motors, its subsidiaries or suppliers to GM worldwide. Chevrolets incorporate thousands of components produced by different operating units of GM, its subsidiaries or suppliers to GM worldwide. We sometimes find it necessary to produce Lumina Vans with different or differently sourced components than originally scheduled. All such components have been approved for use in Lumina Vans and will provide the quality performance associated with the Chevrolet name. Since some options may be unavailable when your vehicle is assembled, we suggest that you verify that your vehicle includes the equipment you ordered, or if there are changes, that they are acceptable to you.

A Word About Corrosion Protection

Chevrolets are designed and built to resist corrosion. All body sheet metal components are warranted against rust through corrosion for 6 years/160,000 kilometres. Application of additional rust-inhibiting materials is not required under the corrosion coverage and none is recommended.

Note: Instruments shown throughout this brochure are metric in Canada.

Vehicle: Chevrolet is equipped with Daytime Running Lamps.

General Motors, GM, the GM emblem, Chevrolet, Chevy, the Chevrolet emblem, Lumina, Freedom, Trail-Blazer and the TOTAL Warranty are all trademarks of the General Motors Corporation and/or General Motors of Canada. GMAC and SmartLEASE are trademarks of the General Motors Acceptance Corporation.

Scottchgard is a trademark of the GM Corporation.

Printed in Canada, November 1995. © General Motors of Canada Limited.

EXTERIOR COLOUR AVAILABILITY

14 - Light Gray Metallic

16 - Bright White

30 - Medium Adriatic Blue Metallic

35 - Dark Teal Metallic

36 - Light Adriatic Blue Metallic

43 - Bright Aqua Metallic

44 - Malachite Metallic

72 - Medium Garnet Red Metallic



120-6-A-004E

