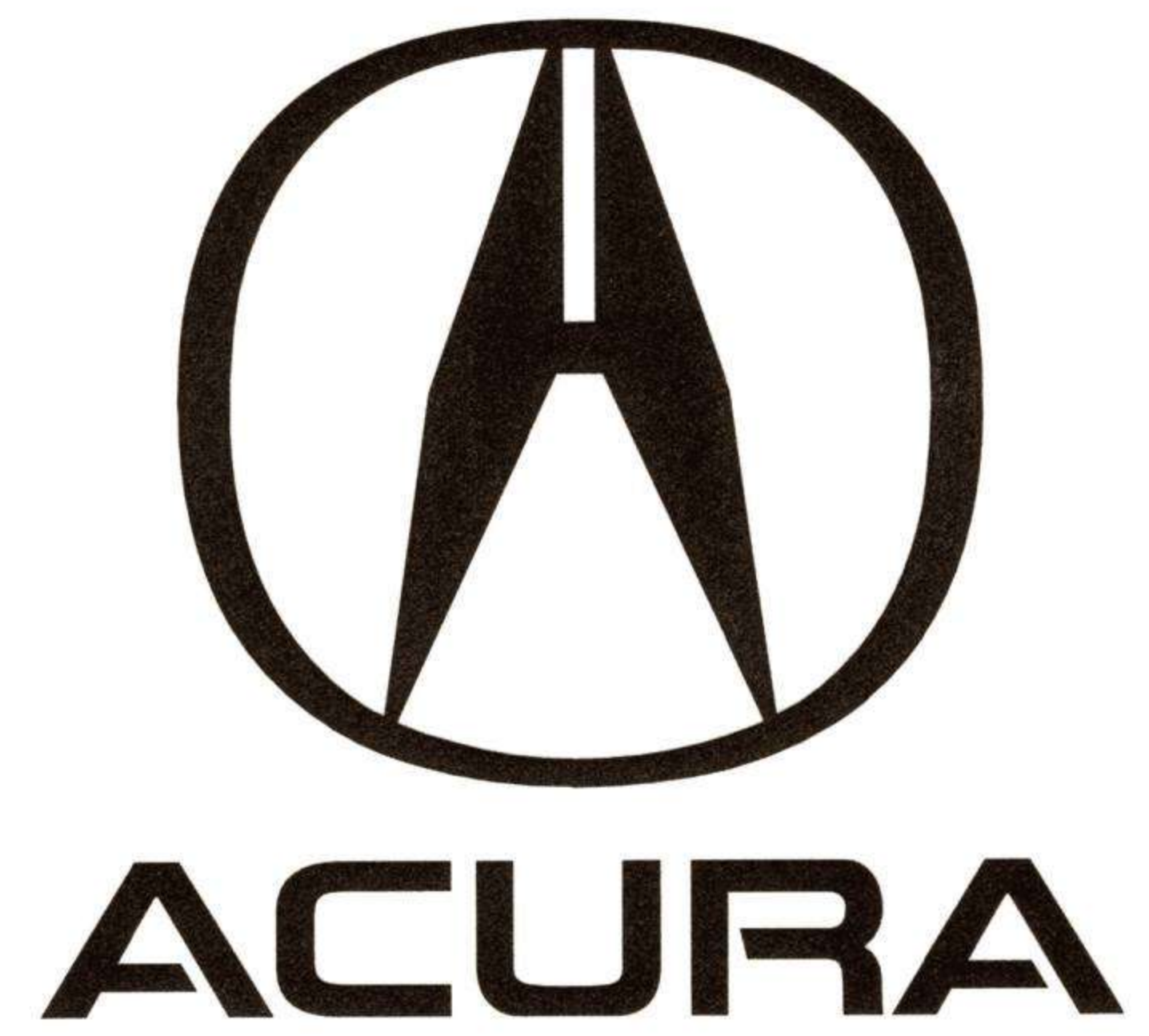




ACURA
The 2000 TL



THE 2000 ACURA TL... A CUTTING-EDGE PERFORMANCE SEDAN OF REFINED LUXURY AND SOPHISTICATED ENGINEERING.



Philosophy



The Acura 3.2TL is shown without front splash guards, however, they are standard on all 2000 models.

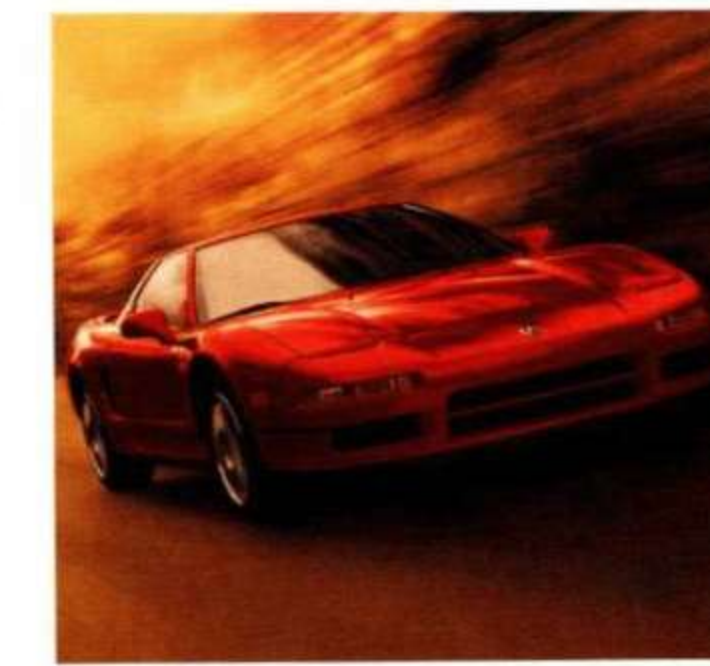
In designing the most refined and sophisticated sports sedan that Acura has ever built, our engineers drew upon years of racing experience acquired on the Grand Prix racetracks of Europe. The result was a performance sedan that sets the benchmark in its class, offering as much driving excitement as it does luxury and comfort.

The 2000 Acura TL is equipped with the most comprehensive features and technology of

any sports sedan available. From the powerful 225-horsepower engine that boasts the same sophisticated VTEC technology first introduced on the legendary Acura NSX-T to the race-derived 5-speed automatic transmission with "Sequential

SportShift," the Acura TL inspires a truly unique and personal driving experience. And to complement the nimble front double-wishbone suspension the TL boasts a multilink rear double-wishbone suspension for enhanced handling prowess, bringing the road to life in your hands.

Open the driver's door and you'll quickly realize that the Acura TL is as comfortable as it is exhilarating to drive. The expansive cabin offers a richly-appointed environment of supple leather, seats that conform to your body, wood-grain trim and meticulous craftsmanship which ensures all controls are easily within reach.



Like the Acura NSX-T, the TL employs such advances as computer-controlled fuel injection and the VTEC technology system.

The Acura TL delivers premium value with a sweeping list of standard features from the power-operated moonroof to the remote keyless entry system with 'panic' feature, as well as a host of other thoughtful amenities too numerous to list.

The Acura TL strikes an ideal balance between soothing comfort, luxurious appointments and stimulating response. All of which did not go unnoticed by the Automobile Journalists Association of Canada who chose the Acura TL as "1999 Canadian Car of the Year."



AUTOMOBILE JOURNALISTS ASSOCIATION OF CANADA
The TL took home "1999 Canadian Car of the Year" honours, as voted by The Automobile Journalists Association of Canada.



C o m f o r t



All 2000 TL models will be equipped with User-Ready Tether Anchors and front seat Side Air Bags, both of which are not shown.

When equipping the Acura TL with comfort amenities our engineers truly thought of everything. The inviting spacious interior hosts an abundance of soft, hand-selected leather and the look of rich wood-grain trim. The seats are designed to be exceedingly comfortable through even the longest trips thanks to the multi-density foam cushions that surround and support your body. The front

seats are individually heated while the quiet, quick-cool Automatic Climate Control System featuring the advanced Micron Air Filtration System has enough power to cool a mid-sized house. Helping

maintain cabin temperature is a special heat-absorbing, green tinted glass. The TL has been crafted to deliver a comfortable and very personal driving experience.



An Advanced Micron Air Filtration System helps to eliminate soot, pollen and bacteria as small as one millionth of an inch for improved interior air quality.



An Ergonomically-Designed Control Panel, located in the driver's side front-door handle, keeps power window and mirror controls comfortably within reach.



Rear Seat Adjustable Vents allow passengers in the back to control their own environment. There's also a convenient, removable storage bin.

F e a t u r e s



Premium value only begins to describe the Acura TL which offers over 100 standard features. From the power-operated moonroof and immobilizer-equipped ignition system to the rear seat cupholder/armrest and convenient trunk pass-through, the TL has a host of sophisticated amenities the details of which you'll find in our specification section.

Like the Acura TL engine,

the advanced Acura/Bose® Music System performs with power to spare. With an in-dash CD player, Dolby-equipped cassette, AM/FM stereo and Bose® ND woofer located under the rear window and driven

by a powerful 100-watt Bose® amplifier, the sound quality rivals that of many premium home systems. Proof that no detail is overlooked in the quest for driving perfection.



Steering Wheel-Mounted Audio Controls let you adjust the stereo volume or change musical programming without taking your hands off the wheel.



The Remote Control Homelink® System lets you open garage doors without a "clicker." An optional lighting accessory allows you to turn on houselights for added personal security.



The Standard Immobilizer System helps prevent theft by ensuring the TL cannot be started without the proper, electronically coded key.



P e r f o r m a n c e



For all of its readily apparent luxury, the TL is also a car which electrifies your senses. That's because the Acura TL sports a 3.2-litre, 24-valve, all-aluminum V-6 engine that generates an awesome 225 horsepower. Thanks in no small part to the VTEC (Variable Valve Timing and Lift Electronic Control) System which automatically switches between two camshaft profiles for prodigious low-end torque and



The Racing-Inspired 4-Valve-Per-Cylinder Design uses state-of-the-art technology tested at over 350 km/h on racetracks from Monaco to Michigan.



The 5-Speed Automatic "Sequential SportShift" Transmission gives you the control of Formula One-inspired, auto-manual shifting with the smoothness of an automatic powertrain. Accessory shift handle shown.




The TL Powerplant with VTEC System is designed to meet California's Stringent Low Emission Vehicle (LEV) standard.

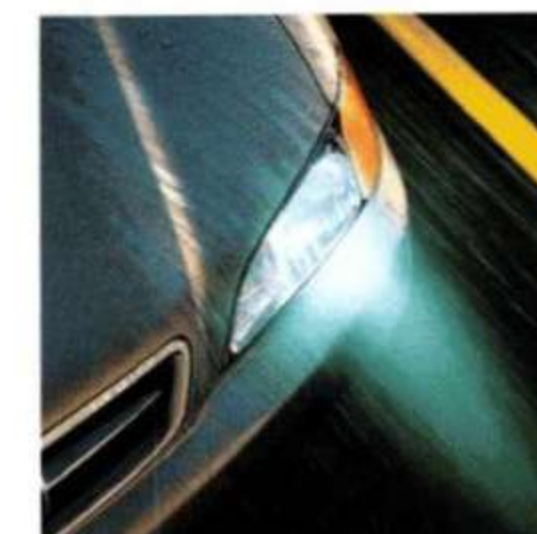
high rpm thrust combined with impressive fuel efficiency. Complementing this incredible engine is a powertrain featuring a Grand Prix-inspired "Sequential SportShift" transmission. With its precisely-spaced gear ratios and sophisticated electronic controls, this transmission maximizes both the power and efficiency of the 3.2 litre V-6. So, the performance is just as smooth as it is invigorating. 

S a f e t y



One of the greatest luxuries a fine automobile can provide is a well-founded sense of safety and security. The TL boasts an extensive array of safety features like front and rear crumple zones, dual side-impact beams in the front doors, advanced head protection in the centre pillar and roof as well as dual front and side air bags with front passenger seat sensors. With its

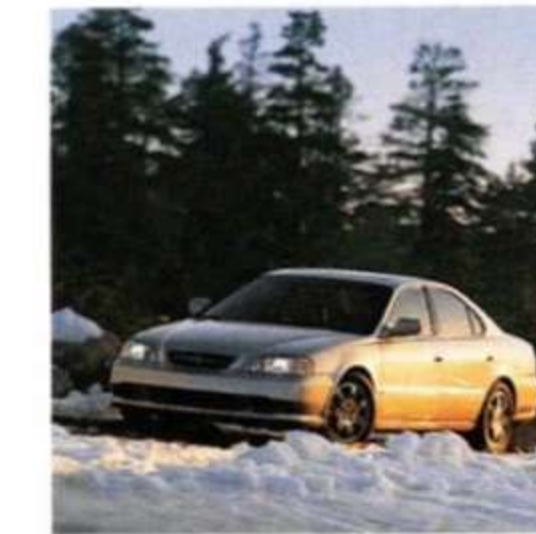
rigid, steel-reinforced body the Acura TL also yields a quiet, confident ride. For authoritative control there's the 4-wheel, independent double-wishbone front suspension and multilink double-wishbone rear suspension. And the standard Traction Control System (TCS) and 4-wheel Anti-Lock Braking System (ABS) complement the sure-footedness of front wheel drive. 



High-Intensity Discharge (HID) Headlamps cast a brilliant white light to give you dramatically enhanced night vision, increased energy efficiency and durability.



Front Side Air Bags are featured in each front seat for enhanced protection from side impacts. Sensors in the front passenger's seat prevent the air bag from deploying if a child or small adult is out of position.



The Standard Traction Control System (TCS) operates at low speeds by automatically applying one or both front brakes to control wheelspin.

Specifications

ENGINEERING

Powertrain	Front engine/front-wheel drive
Engine Type	3.2-litre, 24-valve, SOHC, VTEC, V-6
Horsepower, SAE net	225 hp @ 5500 rpm
Torque, SAE net	216 lbs.-ft. @ 4700 rpm
Redline	6300 rpm
Bore & Stroke	89 mm x 86 mm
Displacement	3210 cc
Compression Ratio	9.8:1
Induction System	Programmed Fuel Injection (PGM-FI)
Valvetrain	4-valves-per-cylinder, belt-driven, single overhead camshaft
Engine Block	Aluminum alloy with cast-iron cylinder liners
Cylinder Head	Aluminum alloy
Emission Control	Designed to meet California's stringent Low Emission Vehicle (LEV) standard
Ignition System	Full electronic ignition with new generation knock control system
Battery	12V, 55 amp.-hour maintenance free
Alternator	12V, 105 amp. max.
Automatic Transmission	5-speed "Sequential SportShift" with electronically controlled lock-up torque converter and Grade Logic Control System

SUSPENSION / CHASSIS

Front Suspension	Independent double-wishbone with coil springs and stabilizer bar
Rear Suspension	Multi-link double-wishbone with coil springs and stabilizer bar
Shock Absorbers	Twin tube gas type
Steering Type	Speed-sensitive power steering
Stabilizer Bars	
Front	27.2 mm diameter x 4.5 mm wall thickness
Rear	18 mm solid
Steering Wheel Turns, lock-to-lock	3.11
Turning Diameter, wheel-to-wheel centre	5.6 m
Wheels	Cast-aluminum alloy, 6.5 JJ x 16 with centre cap
Tires	All-Season 205/60 R16 91V M+S
Braking System	Dual-diagonal, power-assisted, 4-wheel disc brakes
Front Discs	Ventilated, 300 mm diameter
Rear Discs	282 mm diameter
Parking Brake	Drum-in-disc, mechanically actuated on rear wheels
Anti-Lock Braking System	3-channel with 4 wheel-speed sensors and electronic/hydraulic control unit

CAPACITIES

Crankcase	4.4 litres refill capacity including filter
Cooling System	7.47 litres
Washer Tank	4.5 litres
Fuel Tank	65.0 litres
Passenger Volume	2733 litres
Cargo Volume	405 litres

FUEL ECONOMY

Fuel Consumption City: 12.2 Highway: 7.4 (L/100 km)
(2000 Data Shown)

Recommended Fuel Premium unleaded; 91 octane*
*Gasoline with an octane number lower than 91 may be used, with reduced performance.

SAFETY FEATURES

4-wheel Anti-Lock Braking System (ABS)
Traction Control System (TCS)
3-point (ALR) seat belts (Front Rt., Rear x 3)*
3-point (ELR) seat belts**
Driver and front passenger SRS Air Bag System (Supplemental Restraint System)
Driver and front passenger Side Air Bag System with front passenger seat sensors
Front adjustable seat belt anchors
Remote keyless entry system with panic feature
Security system
ECU immobilizer system
Heated exterior mirrors
Rear window defroster
Child-proof rear door locks
Child-safety seat anchors
Automatic transmission interlock feature
*(ALR) Automatic Locking Retractor
**(ELR) Emergency Locking Retractor

EXTERIOR DIMENSIONS

Wheelbase	2745 mm
Track, front	1555 mm
Track, rear	1535 mm
Length	4900 mm
Width	1785 mm
Height	1425 mm
Minimum Ground Clearance	155 mm
Weight Distribution, (%) front/rear	62/38
Curb Weight	1570 kg*

*1999 Data Shown. Please see your Dealer for the latest 2000 Transport Canada data.

INTERIOR DIMENSIONS

Front:	
Head room	1013 mm
Leg room	1078 mm
Hip room	1423 mm
Shoulder room	1427 mm
Rear:	
Head room	935 mm
Leg room	889 mm
Hip room	1397 mm
Shoulder room	1414 mm

EXTERIOR FEATURES

High Intensity Discharge (HID) headlamps
Body-coloured front and rear bumpers
Body-coloured front chin spoiler
Folding body-coloured door mirrors
Body-coloured side mouldings and side sills
Heat-absorbing green tinted glass
Rear window defroster with timer
Double-sided galvanized steel body panels in all high corrosion areas
Acid Etch clear-coat paint system
Rear in-glass print antenna
Front splash guards

SEATING AND TRIM

Leather-appointed interior
Leather-wrapped steering wheel & shift knob
Florentine burl wood-print trim
Driver's 8-way power seat with adjustable lumbar support
Passenger's 4-way power seat
Heated front seats
Centre console with storage and slide armrest
Rear seat headrests
Rear seat centre armrest with lockable trunk pass-through and cup holder
Carpeted floor mats

COMFORT & CONVENIENCE

Automatic Climate Control System
Electric cruise control
Tilt steering column
Power door locks and windows with driver's side one-touch down feature
Power-operated privacy glass moonroof with sliding shade
Power-operated heated door mirrors
Bose® Music System with five speakers, including rear woofer, AM/FM stereo/cassette, in-dash CD player, and anti-theft feature
Steering wheel-mounted audio control switches
Homelink® remote control system*
Overhead map light
Remote lockable fuel-filler-door release
Remote electric trunk release
Overhead sunglasses box
Illuminated power window control switches and ignition lock surround
Dual illuminated vanity mirrors
Front dual beverage holder
Driver's and front passenger's seat back pockets
LCD clock
Trunk net and hook
Outside temperature gauge
Speed-sensitive variable intermittent windshield wipers
* Can be programmed with codes of up to three remote-control devices. (ie: garage-door opener, home security system, etc.)
Additional control devices not provided by Acura, may be required.

The 1999 TL  "Canadian Car of the Year."
AUTOMOBILE JOURNALISTS ASSOCIATION OF CANADA



ACCESSORIES

Genuine Acura Accessories are designed to complement, accentuate and personalize your Acura TL. Ask your Acura Dealer for information.

- Rear spoiler
- Moonroof wind deflector
- Rear splash guards
- Nose mask
- Wood-grain shift handle
- Wood-grain meter panel
- Gold-plated exhaust finishers
- Trunk mounted 6-disc CD changer
- Wheel locks
- Ashtray



The racing-inspired lines of the Acura TL are dramatically enhanced with the TL Aero Package consisting of a body-coloured front chin spoiler and side and rear skirts. Also shown here is the rear spoiler, chrome-finish alloy sport wheels and 24K Gold-plated emblems and grille.

THE ACURA EXPERIENCE



At Acura, our commitment to excellence goes far beyond engineering our vehicles. We're just as committed to making your ownership experience a rewarding one. That's why every new Acura includes:

A complimentary tank of gas at time of delivery • Carpeted floor mats • Leather document holder • 6,000 and 12,000 kilometre scheduled maintenance • 24-hour

Roadside Assistance for the first three years of ownership which includes Dispatch Emergency Roadside Service, Emergency Lockout Service, Traffic Accident Services and more. See your Acura Dealer for details.

ACURA PLUS

As a new Acura owner, you can prolong your worry-free ownership experience by purchasing additional coverage. Just choose from our flexible selection of Mechanical Coverage that extends up to 7 years/160,000 km, whichever comes first. You can also extend your Roadside Assistance. Ask your Acura Dealer for full details.

WARRANTIES

Your new Acura vehicle includes the following warranties: Major component - 5-year/100,000 km limited warranty • Vehicle - 3-year/60,000 km distributors limited warranty • Rust Perforation - 5-year unlimited distance warranty • Surface Corrosion - 3-year unlimited distance warranty • Accessories - 3-year/60,000 km limited warranty (when installed by an authorized Acura Dealer at time of new vehicle delivery). Regular maintenance items and parts are subject to normal wear and replacement, and therefore not covered by warranty. Certain other items are excluded and certain conditions apply. See your Acura Dealer for complete details.

LEASING AND FINANCING

We offer an array of options to make owning an Acura even easier. Ask your Acura Dealer for complete details on: *Acura Future Value Leasing**, *Acura Future Value Financing** and *Conventional Financing**.

*A genuine service of Honda Canada Inc. Conditions, restrictions and pre-payment requirements might apply O.A.C. *Future Value Financing* does not apply in the province of Quebec.

Specifications, features, illustrations and equipment shown in this catalogue are based upon the latest available information at the time of publication. Although descriptions are believed to be correct, accuracy cannot be guaranteed. Honda Canada Inc. reserves the right to make changes at any time, without notice or obligation, in colours, specifications, accessories, materials and models. Some vehicles are shown with optional equipment.®Bose is a registered trademark of Bose Corporation. ®Homelink is a registered trademark of Prince Corporation, a Division of Johnson Controls.

1999 Acura Division of Honda Canada Inc., 715 Milner Avenue, Toronto, Ontario Canada M1B 2K8. Acura, NSX-T, RL, TL, CL, EL and Integra are registered trademarks of Honda Motor Co. Ltd.

Printed in U.S.A. 07/99. Printed on recycled paper. ♻️

7560C004E

Colour & Trim

EXTERIOR COLOUR

Nighthawk Black Pearl

Naples Gold Metallic

Firepepper Red Pearl

Laguna Metallic

Monterey Blue Pearl

Satin Silver Metallic

INTERIOR LEATHER COLOUR

Ebony

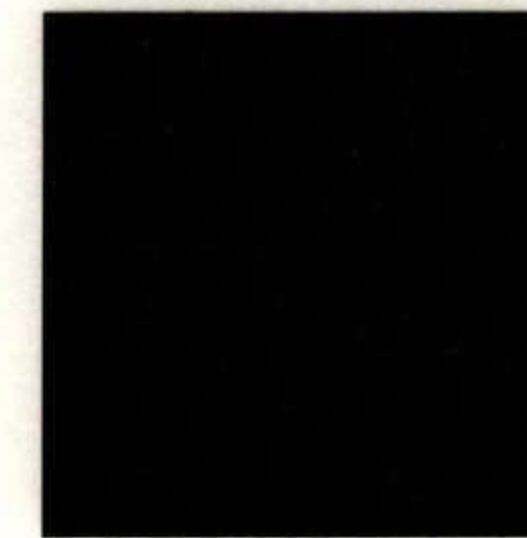
Parchment

Ebony

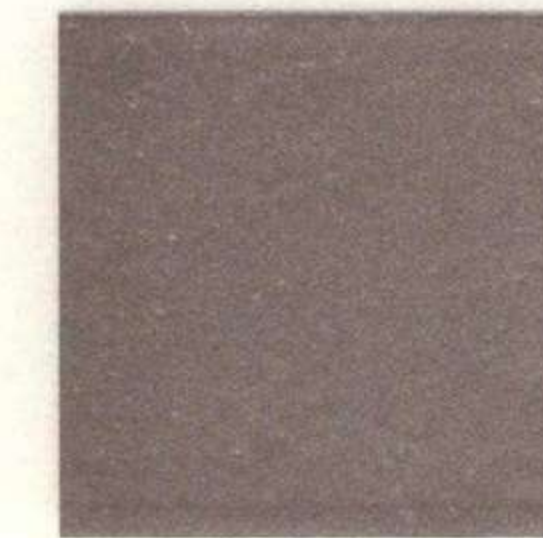
Fern

Ebony

Ebony



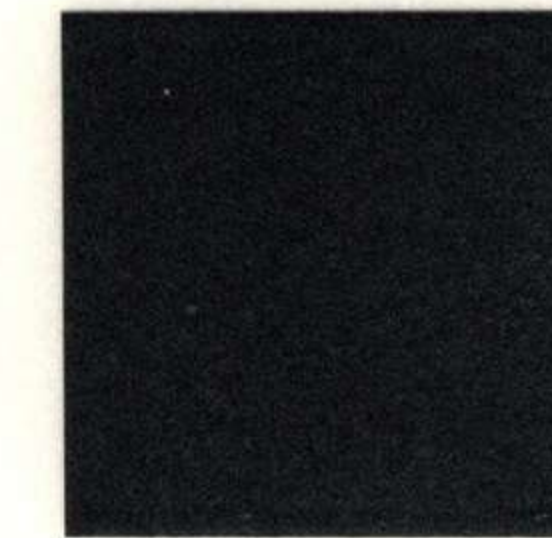
Nighthawk Black Pearl



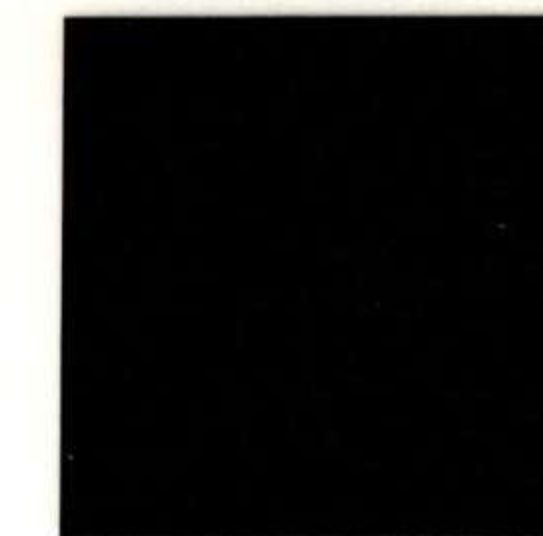
Naples Gold Metallic



Firepepper Red Pearl



Laguna Metallic



Monterey Blue Pearl



Satin Silver Metallic



Ebony



Parchment



Fern



ACURA

Designed with purpose. Driven by passion.