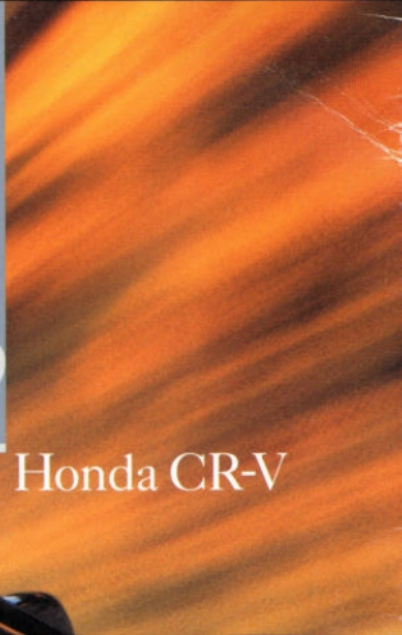
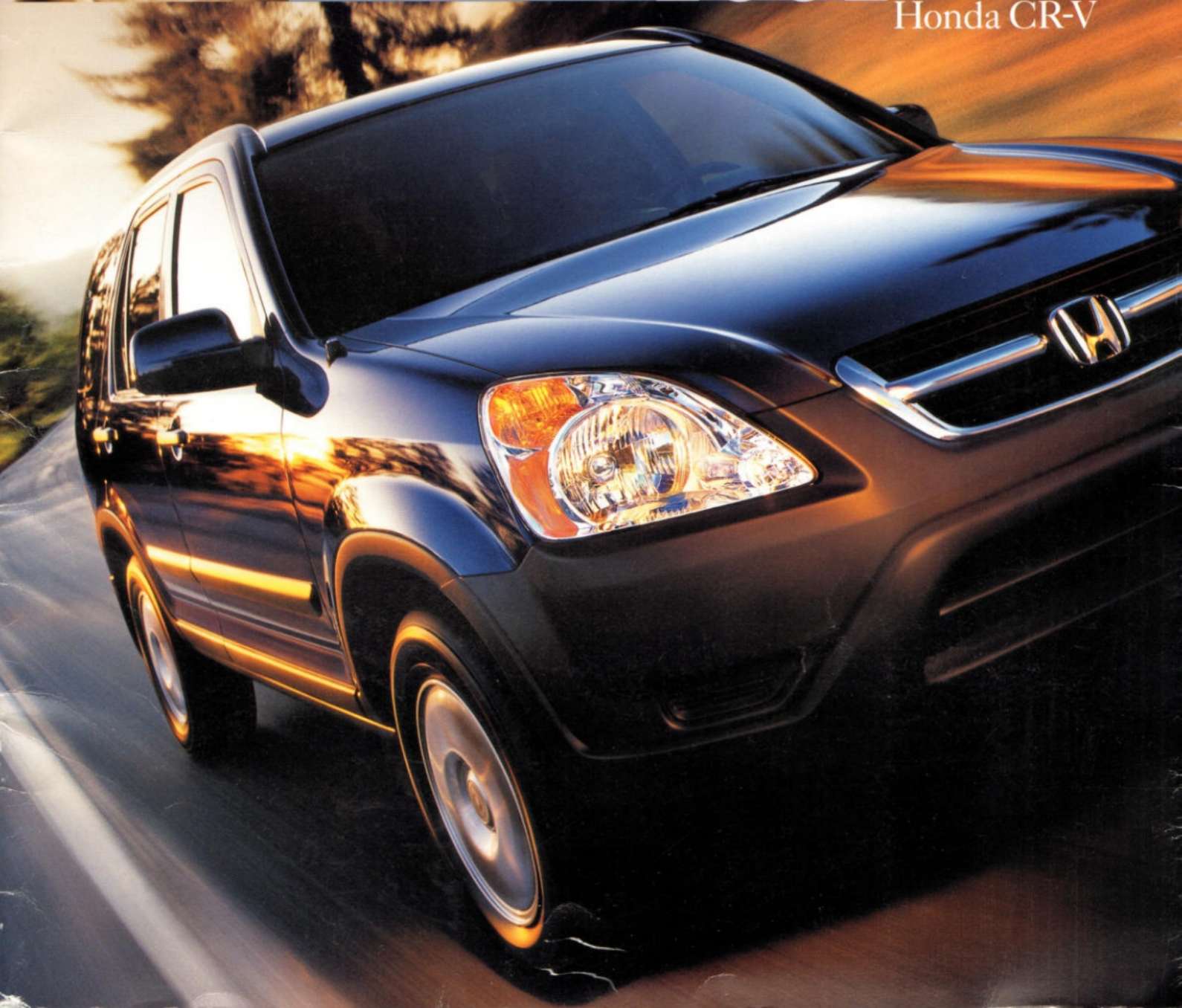




2002



Honda CR-V



Wow, is this ever a tough one.

Decisions. Decisions. Decisions. So what's your preference? LX or EX? 2WD or 4WD? A slick 5-speed manual or the available 4-speed automatic transmission? It's your call. And with **THREE SPORTY VERSIONS** to choose from, you've got plenty to think about. Yes, it's tough settling on just one CR-V. But, as you'll soon see, it's well worth the effort.



CR-V 2WD LX

- 160-hp, 2.4-liter, 16-valve, DOHC i-VTEC™ aluminum-alloy engine
- 4-speed automatic transmission with Grade Logic Control System
- Dual front airbags* (SRS)
- Power windows, mirrors & door locks
- Air conditioning with micron air-filtration system
- Cruise control
- Immobilizer Theft-Deterrent System
- 60/40 split rear sliding fold and tumble seats
- AM/FM stereo cassette with CD player and 4 speakers
- Retractable center tray table
- Available dual side airbags



CR-V 4WD LX

- Adds to or replaces 2WD LX features:
- RealTime™ 4-wheel-drive system
- 5-speed manual transmission
- Available 4-speed automatic transmission with Grade Logic Control System



CR-V 4WD EX

- All 4WD LX features, plus:
- Dual side airbags
- Anti-lock braking system (ABS)
- Remote entry system
- Power moonroof with tilt feature
- AM/FM stereo cassette with 6-disc in-dash CD changer and 6 speakers
- 15" alloy wheels, including spare
- Body-colored dual power mirrors
- Rear privacy glass



Design

Performance

Refinement

Safety

Environment



More powerful. Bigger. Stronger. Get the picture?

Honda has taken everything that's made the CR-V a big success and dialed it up even higher. Its advanced 160-hp, 2.4-liter, DOHC i-VTEC engine makes **more power**, while a refined new chassis results in greater responsiveness and agility—as well as a quieter, **smoother ride**. Inside, its roomier interior offers a substantial volume

of cargo space, plus a wide variety of handy storage compartments. The CR-V can be **easily reconfigured** to fit almost any situation. And its advanced safety design includes **dual-stage front airbags***. So, got errands? Car pool? Want to take a trip to the mountains? The new Honda CR-V can handle it all. With ease.

*Honda reminds you and your passengers to always buckle up.

When you make a bold statement, have something to back it up.



Bigger and sportier than ever, the CR-V turns a bold new face to the world with its multifaceted **HEADLIGHTS** that complement a sharply sloping hood line and bright chrome accents.

The CR-V presents a rugged, handsome and broad-shouldered look, thanks in part to its **INTEGRATED ROOF RAILS**. They also serve as the solid foundation for the available roof rack, further adding to the CR-V's remarkable versatility.



Lots of important design elements and little details went into giving the CR-V its tough, powerful new look, such as a **BRIGHT CHROME GRILLE** and distinctive hood insignia.

The new CR-V is sure to leave a lasting impression on everyone it passes with its high-mount **TAILLIGHTS**. Since their vivid design is readily visible to other drivers on the road, they can also help reduce the risk of rear-end collisions.



Gear up.



CR-V EX shown in Chianti Red Pearl.

Move out.



Before heading out for your favorite campground, you'll want to connect with the CR-V. Its powerful 160-hp, 2.4-liter, DOHC i-VTEC engine gives it a **1500-LB. TOWING CAPACITY** – plenty of muscle to haul you and your gear all the way there and back.

With the all-new CR-V, you enjoy the **ideal blend of power and efficiency**, thanks to its totally new and highly advanced 160-hp, 2.4-liter, DOHC i-VTEC engine. This power plant produces plenty of torque in the low-to-middle part of the rpm range, where you need it the most. Maximum torque of 162 lb.-ft. is achieved at just 3600 rpm. And as an added bonus, CR-V is virtually **maintenance-free**, with no major tune-ups needed for the first 110,000 miles.*

*Does not apply to fluid and filter changes. See your owner's manual for details.

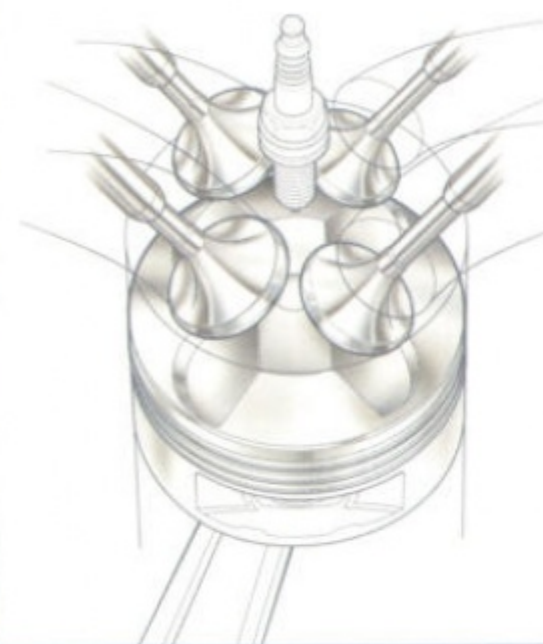


The CR-V's advanced engine design plays a huge role in its enhanced performance. For example, its i-VTEC valve train and dual-length intake manifold work together to produce **increased torque** at lower speeds where you need it for things like towing. Then, at higher speeds, they make the added power you need for highway driving or passing and merging. Combined with advanced fuel injection and a precise direct ignition system, they promote **excellent fuel efficiency**.¹ And the CR-V's strong, lightweight aluminum-alloy engine block is extremely rigid and employs energy-absorbing, liquid-filled engine mounts to provide **reduced noise and engine vibration**.

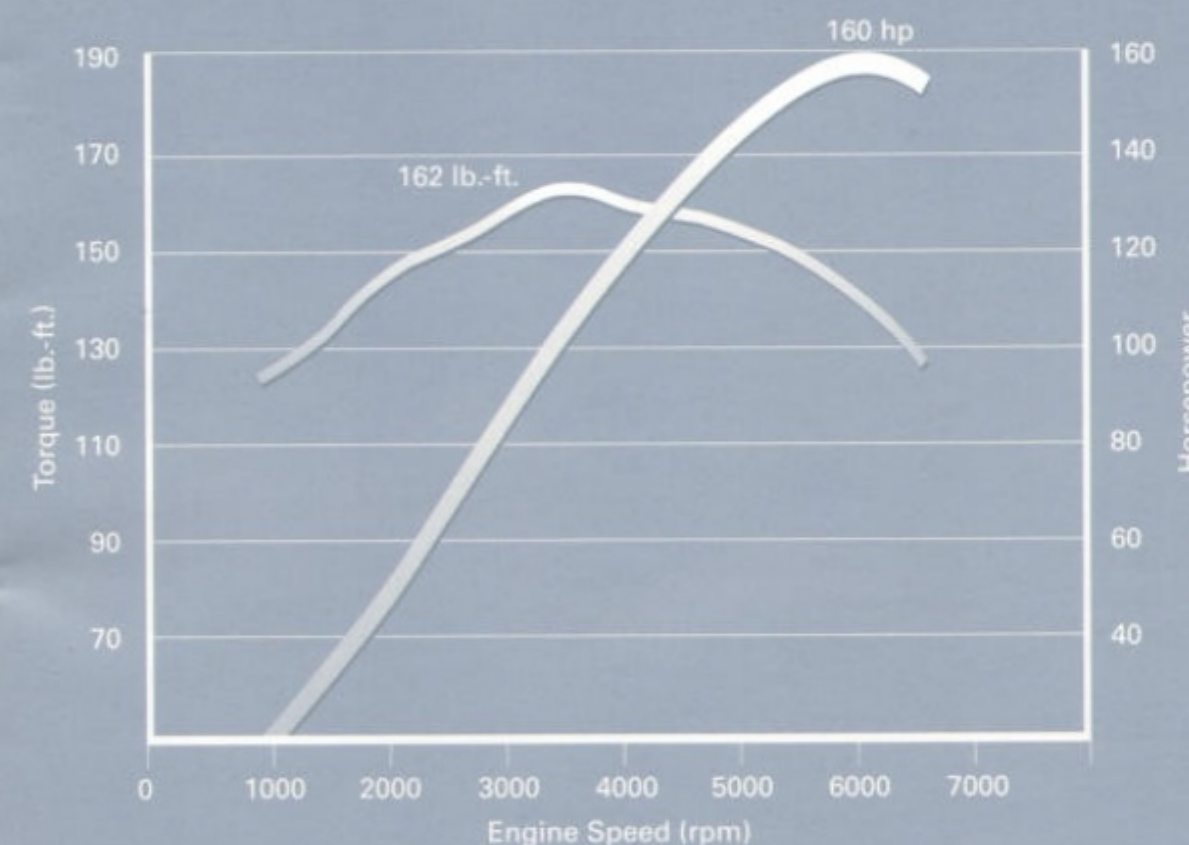
At the very heart of the new CR-V's performance is the latest version of Honda's variable valve timing and lift electronic control (VTEC) system. Called **i-VTEC** for its higher level of intelligence, it helps produce more torque at lower speeds, plus excellent peak horsepower at higher rpm. Its **VARIABLE TIMING CONTROL (VTC)** enables the camshaft timing to be fine-tuned at all engine speeds.



Honda has always operated under the assumption that racing not only makes for a far better car – it also makes for a better car engineer. It's a belief that's been proven over **FOUR DECADES OF RACING** on many of the world's most ferociously fast and unforgiving racetracks. After learning to innovate under such intense pressure, Honda engineers are better prepared to achieve significant advances in engine performance, handling and dependability. And you'll be able to appreciate their contributions every time you get behind the wheel of your new CR-V.



Much like a set of healthy lungs, the new CR-V engine's **ADVANCED 4-VALVE-PER-CYLINDER DESIGN** with dual overhead camshafts (DOHC) allows it to breathe deeply, drawing in more air and fuel. This, in turn, helps the engine produce more horsepower. Take a look at the performance chart below. Along with 160 hp, the CR-V produces the bulk of its torque in the low- to mid-speed range. And that's just where it needs to be to let you move in and out of slower-moving city traffic or conquer tall mountains.

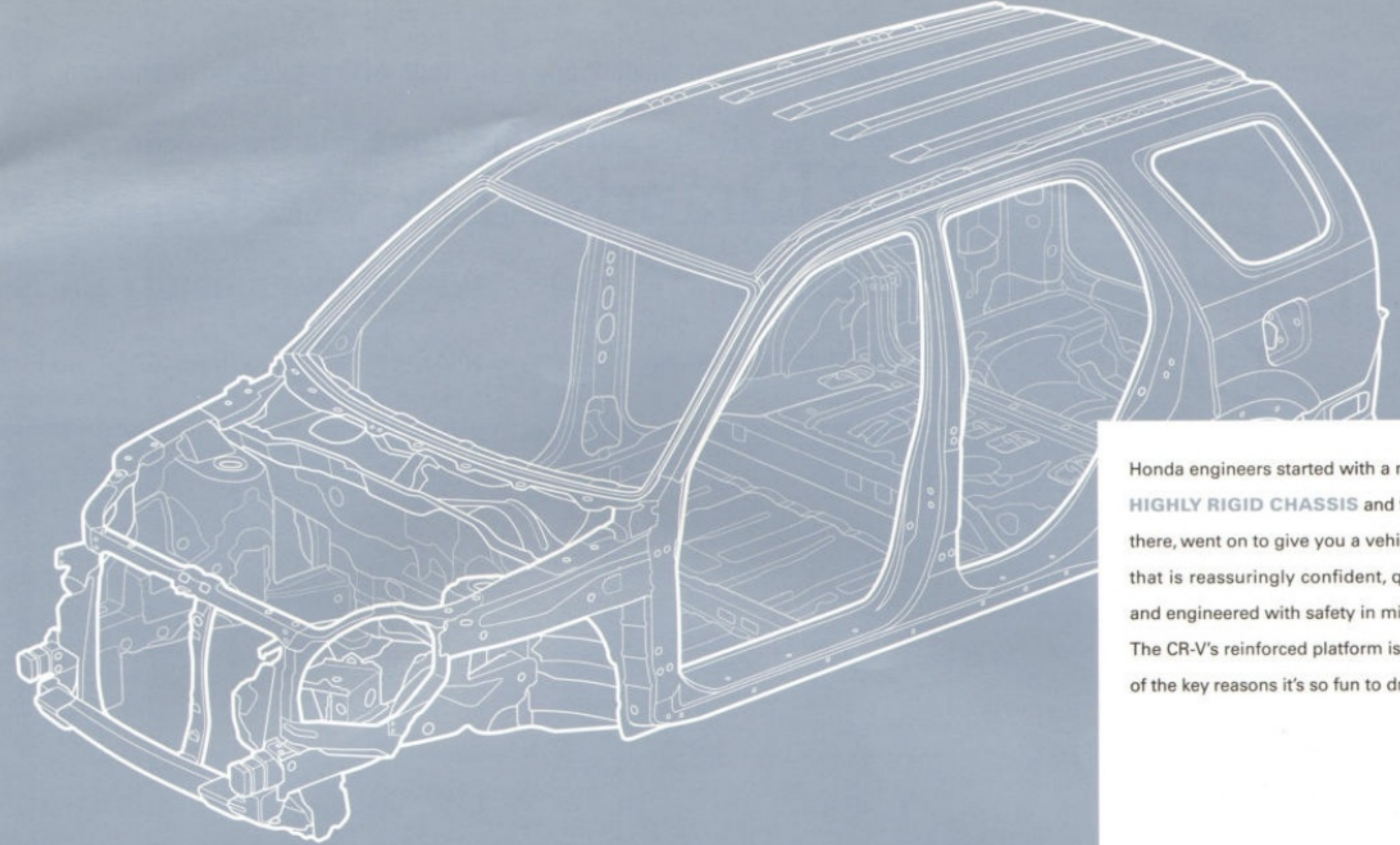


Ready to shift your excursions into high gear? Then reach for the standard 5-speed manual or available 4-speed automatic transmission shifter (standard on 2WD LX). The automatic transmission comes with a **GRADE LOGIC CONTROL SYSTEM** that helps eliminate gear hunting on inclines for a smoother transference of horsepower. Then, on descents, it shifts into and holds a lower gear for engine braking assistance to help moderate your downhill speed. Computer control makes this all possible and allows the CR-V to combine highly responsive performance with real comfort and convenience.



Just go.

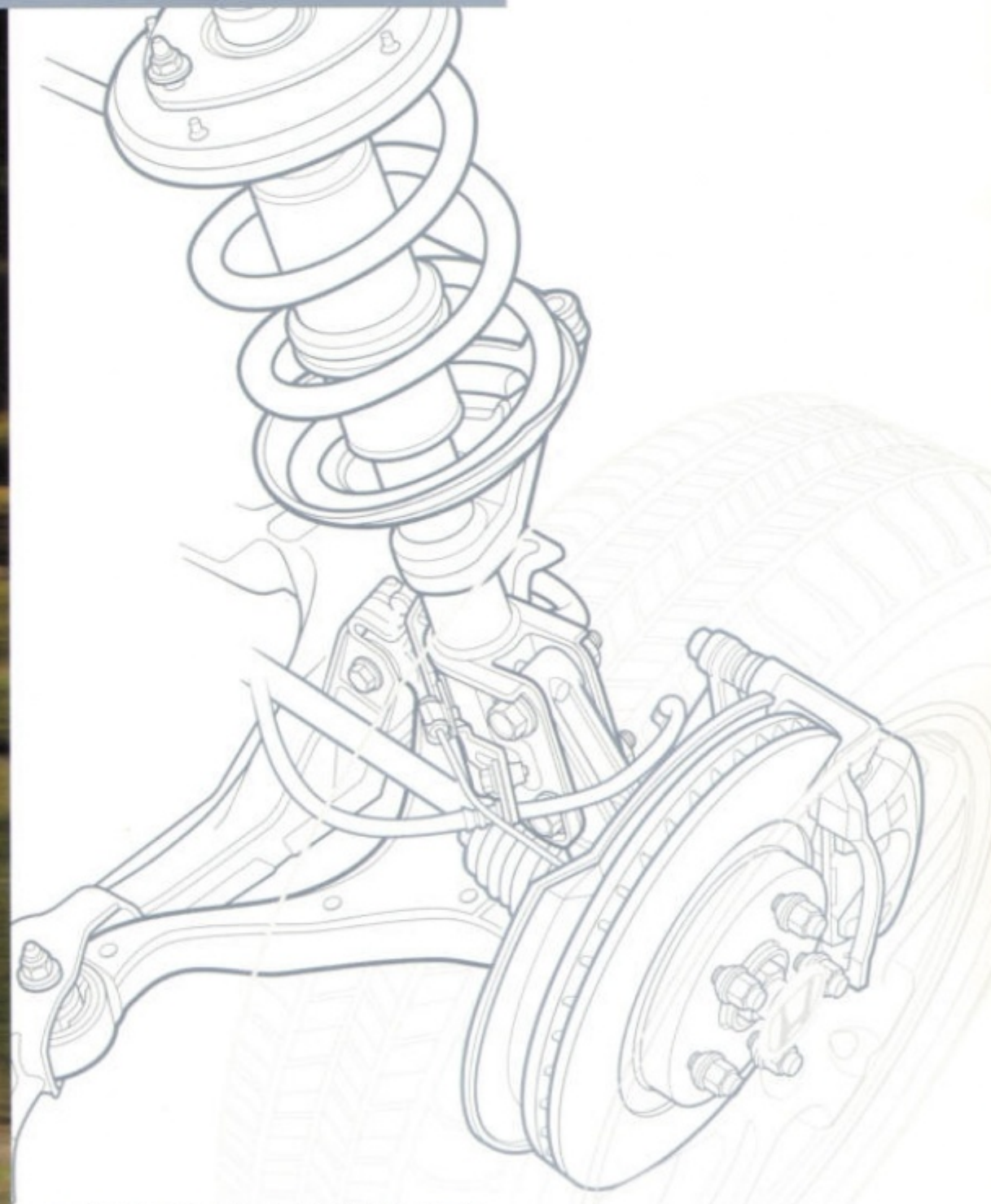
For those times when you need some added traction to take you where you want to go and then keep on going, count on the new CR-V's **Real Time 4WD** system (4WD LX and 4WD EX). It actually senses wheel slippage and automatically engages the 4-wheel drive to give you **enhanced traction and control**. Imagine. No buttons to push or levers to shift. Just the surefooted action you need whenever you're starting off on a slippery surface, traveling over dirt roads or driving in rain or snow.



Honda engineers started with a new, **HIGHLY RIGID CHASSIS** and from there, went on to give you a vehicle that is reassuringly confident, quiet and engineered with safety in mind. The CR-V's reinforced platform is one of the key reasons it's so fun to drive.



The CR-V's highly advanced 4-wheel independent suspension positions the wheels and tires with precision for excellent stability and responsive handling. A compact turning radius makes short work of sharp corners. And with a **WIDE TRACK** plus 8.1" of ground clearance, there's a solid, stable feel with the CR-V that helps make driving all the fun it should be.



To give you a smooth, supple ride without compromising control or stability, CR-V has a sophisticated double wishbone rear suspension. Its advanced design also helps reduce rear "lift" during hard braking, while the **CONTROL-LINK MACPHERSON STRUT FRONT SUSPENSION** works to make the handling more responsive and precise.

CR-V 4WD LX shown in Mojave Mist Metallic.

Work? Play? Errands? They're handled.

There's just something about a CR-V that starts you thinking about going places and doing things. And why not? With **seating for five adults** and a broad array of great features, you have everything you need for whatever you have in mind to do.

There's even a **folding picnic table**. And with the CR-V's amazingly versatile cargo-hauling capability, you and your companions can take along loads of gear, too.



The all-new CR-V's spacious interior has been increased in length, width and height, and comes with **LARGE, MULTI-ADJUSTABLE SEATS**.

Comfortable and supportive, they make it easy for your passengers to stretch out, relax and enjoy the ride.



Settle into the new CR-V's driver's seat and take command of a highly satisfying driving experience. The **LARGE GAUGES** give a modern look while communicating data at a glance. The ergonomically designed controls become second nature on your first drive. And standards like **CRUISE CONTROL** can help turn a long haul into a pleasure trip.



CR-V's sporty new instrument panel features a **6-DISC CD CHANGER** with 6 speakers (EX) to entertain you as you drive. Handy storage areas abound, so you can keep favorite items close at hand. And to help keep your CR-V close, an **IMMOBILIZER THEFT-DETERRENT SYSTEM** is standard on every model.

CR-V EX interior shown in Saddle.



Use the **remote entry system** (EX) to operate the door locks and rear glass hatch release from up to 50 feet away. Once inside, you'll admire the many comforts and conveniences afforded the lucky CR-V occupants. **Power windows, mirrors and door locks** are standard, of course. And features like dual map lights and carpeted floor mats add yet another welcome touch to the CR-V's sporty new interior.



Everything in its place and a place for everything—that sums up the new CR-V. Its **RETRACTABLE CENTER TRAY TABLE** with a handy dual beverage holder heads the list. It folds away to enable easy walk-through access to the rear seats. And places to store smaller items abound. With cargo nets, parcel shelves, side-door pockets and more, the CR-V is one versatile carryall.



Adjusting the CR-V's temperature and airflow is easy—even with your gloves on—thanks to the thoughtfully **LARGE CLIMATE-CONTROL SWITCHES**. And when it warms up outside, you'll appreciate the standard, quick-cooling **AIR CONDITIONING**. Its micron air-filtration system can help prevent dust and allergens from invading your airspace, so you can enjoy the drive.

This is one of those rare occasions where one size really does fit all.



Wherever you're headed and whatever you have in mind, you'll find that it's really **easy to reconfigure** the CR-V to fit just about any situation. Carpooling or taking off for the weekend with the family or friends? The CR-V can comfortably transport five adults. Of course, on those occasions when you need a highly **versatile cargo and passenger carrier**, the CR-V can adapt in seconds to whatever the situation calls for. Either side of its 60/40 split sliding rear seat – or both together – can fold and tumble forward without removing the head restraints. Both seatbacks recline a full 45 degrees. And almost seven inches of fore and aft travel give you even more options.



For a real breath of fresh air, open up the EX's **POWER MOONROOF** with tilt feature. There's a **SUNGLASS HOLDER** overhead, so your shades are well within reach when you need them. And if it starts to heat up on the outside, count on the EX's **REAR PRIVACY GLASS** to help keep things nice and cool on the inside.



The CR-V's fold-down **REAR CENTER ARMREST** is designed for double duty, combining extra comfort with the convenience of a dual beverage holder that will accommodate two soda cans or a pair of those insulated coffee mugs.

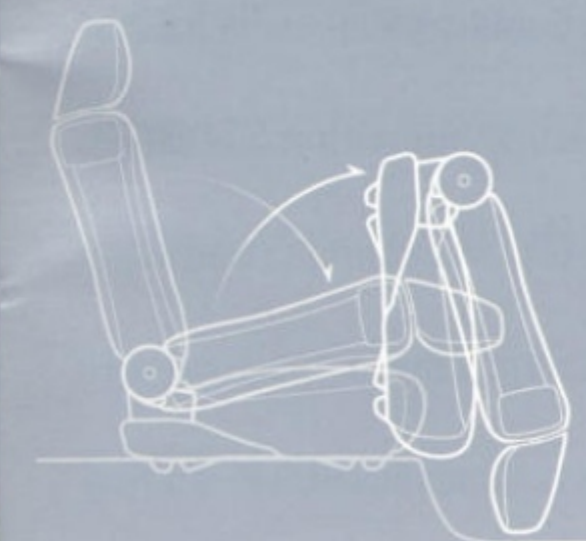
Traveling in the new CR-V is something to look forward to. Along with the added convenience of power windows, mirrors and door locks, an **AUTO-UP/DOWN DRIVER'S WINDOW** lets you focus on more important operations. Other features like side door pockets can help keep the interior neat and free from clutter.



The new CR-V's roomy interior offers increased headroom, shoulder room and hiproom. In back, its adjustable **SLIDING REAR SEATS** offer 6.7 inches of fore and aft travel, so even rear-seat passengers have plenty of room to stretch out and relax. Both of the rear seatbacks recline for added comfort. And thanks to the sliding rear seats, it's easy and convenient to create additional cargo space.



There's more than one way to get to the CR-V's generous cargo area. Open the **FULL-SWINGING TAILGATE** from the side – its side-hinged design opens a full 90 degrees for easy loading and unloading. Or, simply lift up the glass hatch. Inside are lots of storage areas and conveniences, like compartments integrated into the rear tailgate and easy-to-reach hooks for grocery bags.



You really can't say enough about the CR-V's **VERSATILE REAR CARGO AREA**! With the rear seats folded down and tumbled forward, it's possible to load and transport two mountain bikes – without removing either the rear seats, their head restraints or the front wheels of the bikes. Specifically re-engineered to make handling cargo a breeze, the CR-V's cargo floor has also been lowered a full four inches, resulting in a significantly **LOWER LIFTOVER HEIGHT**. It's an important difference you'll appreciate whenever you have to load or unload groceries, camping gear or other items.

*Honda reminds you to properly secure items stored in the rear cargo area.



Many things about the new CR-V can be described as "ingenious," including the way the **REMOVABLE CARGO FLOOR** lifts out to become a folding picnic table. And that's just the beginning. Underneath the removable floor is a generously proportioned **STORAGE WELL**. This handy storage compartment is easy to get to and ideal for storing wet items like fishing tackle or diving gear. With the removable cargo floor in place, it gives you an added measure of protection in those situations when you want to make sure your valuables are out of sight.

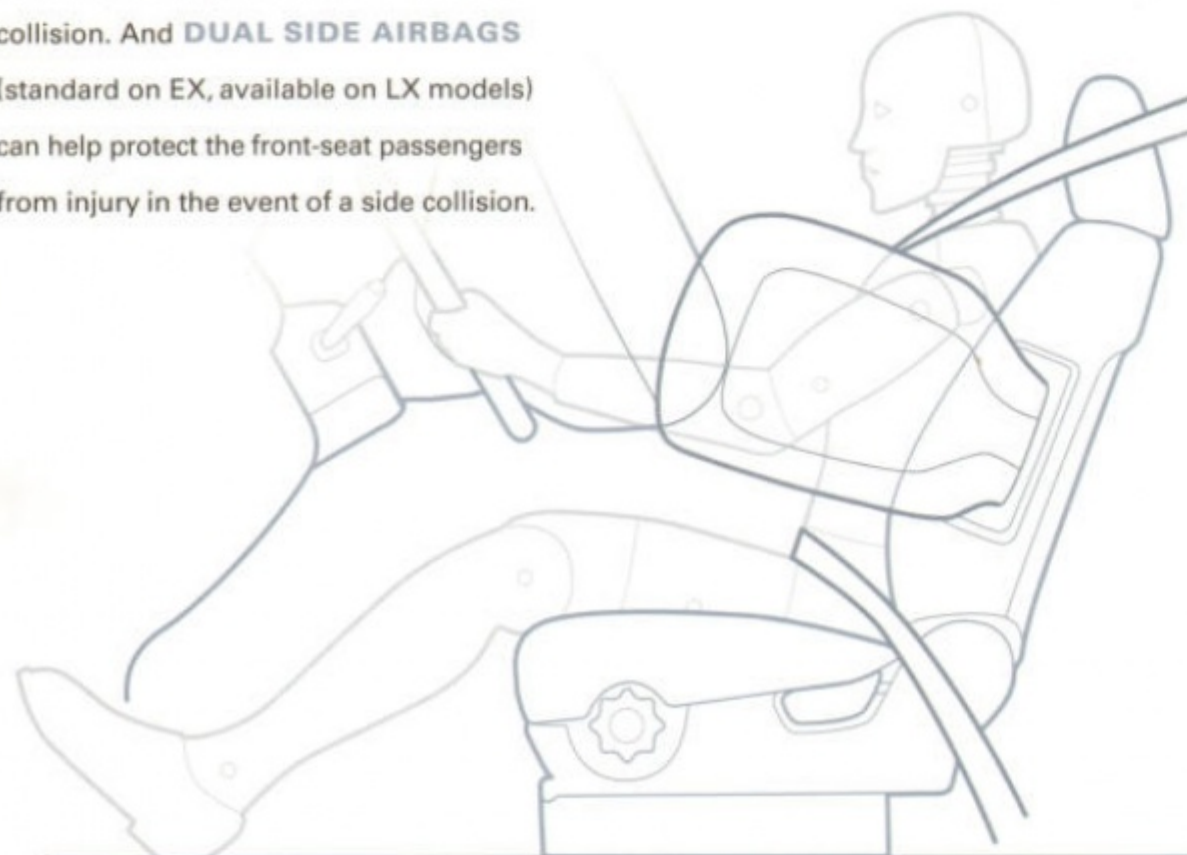
Buckle up. Stay alert.



Every now and again, the unexpected happens and you're forced to hit the brakes hard. It's at these times that you're especially concerned with maintaining good control. The EX model's **4-WHEEL ANTI-LOCK BRAKING SYSTEM (ABS)** uses feedback from wheel sensors to modulate brake pressure. This helps prevent wheel lockup, so you can retain steering control during hard braking.

And CR-V can take it from there.

To help reduce the risk of serious injury, the new CR-V's **DUAL-STAGE FRONT AIRBAGS (SRS)*** deploy at one of two rates, depending upon the force of the collision. And **DUAL SIDE AIRBAGS** (standard on EX, available on LX models) can help protect the front-seat passengers from injury in the event of a side collision.



Honda's legendary commitment to safety has found a fresh, new expression in the CR-V. Starting out with a **strong, rigidly reinforced body**, Honda has used its experience and expertise to create a vehicle designed with an emphasis on the safety of its occupants. All five seating positions have **3-point seat belts** designed to help hold occupants securely in place in the event of a collision. Automatic front seat belt tensioners and adjustable front- and rear-seat head restraints can also help prevent injuries. Front seats feature enhanced whiplash protection, thanks to head-restraint and upper-seat-cushion geometry designed

to distribute impact forces more evenly between the shoulder, neck and head. And there are lots of other important features, like child-proof rear door locks, auto-locking seat belt retractors, and a rear-seat **LATCH** (Lower Anchors and Tethers for Children) system to help ensure correct use of compatible child seats. Of course, high on the list of CR-V safety features are those that can help you avoid trouble in the first place, like good visibility, fade-resistant 4-wheel disc brakes and the clever **Real Time 4WD** system (4WD models) that automatically engages when you need the extra traction.



The CR-V's strong, **REINFORCED BODY DESIGN** can help prevent injuries with built-in front and rear crush zones that progressively crumple in a collision to help absorb the energy of an impact. Other safety design features include strong tubular steel door beams to help protect you in the event of a side impact.

*Honda reminds you and your passengers to always buckle up.

The all-new CR-V: It's time to rethink your definition of "good, clean fun."



CR-V EX shown in Nighthawk Black Pearl.

At Honda, we believe that no vehicle performs at its best unless it's also **environmentally responsible**. Our 1975 Civic CVCC shocked the world, meeting clean-air standards without using a catalytic converter. And ever since, all Honda models have been engineered with a keen awareness of their impact on the environment. So even our ultra-high-performance 240-hp S2000 sports car is an LEV (Low-Emission Vehicle). All of our Civic Coupe and Sedan models are classified as **ULEV** (Ultra-Low-Emission Vehicles), and



select Accord EX sedans are classified as **SULEV** (Super-Ultra-Low-Emission Vehicles). Honda's natural-gas-fueled Civic GX is the cleanest-burning internal-combustion-engine vehicle in the world. And our Insight, the first gasoline-electric hybrid in America, was recognized by the Sierra Club with its first Excellence in Environmental Engineering Award. At Honda, our commitment to put Earth and its resources first remains steadfast. And even now, we're dreaming of a brighter, **cleaner tomorrow**.





CR-V EX shown in Satin Silver Metallic.



The **Honda family** offers you a superb selection of vehicles, each of which is designed to exceed your expectations and backed by Honda's legendary quality and reliability. Talk to your Honda dealer today. With so many great choices, there's bound to be a Honda that's just right for you.



At Honda, **support** is standard equipment. For example, do you want to personalize your new vehicle? Just

ask your Honda dealer to help you select items from our full line of accessories. They're all covered by a **3-year/36,000-mile limited warranty²** if they're installed when the vehicle is purchased. Of course, you can always rely on your dealer's superb team of Honda-trained technicians to help keep your new vehicle in tip-top condition. After all, no one knows your Honda vehicle better than they do. And, should you ever require additional information or assistance, just call us at **1-800-33-Honda.**

HONDA
Financial Services

Whether you buy or lease a Honda, **Honda Financial Services** can assist you with the process. Ask your dealer which lease or purchase plan best suits your needs.

HONDA
Care

A comprehensive and affordable vehicle and travel protection plan, **Honda Care** is fully backed by Honda reliability, service and parts. See your dealer for further details.



Check out Honda online. For all the latest information, including 2002 product specs, accessories, MSRPs, photos and more, visit [Honda.com](http://www.honda.com). You can even request a price quote, check dealer inventories and apply for financing by just clicking through to [eHonda.com](http://www.ehonda.com). If you'd like additional brochures or have questions, you can always reach us at 1-800-33-Honda.

Exterior Colors.



Chianti Red Pearl
Available with Saddle Cloth Interior



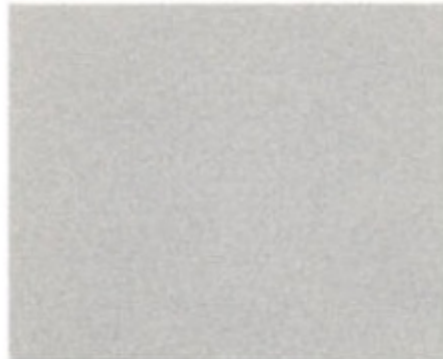
Clover Green Pearl
Available with Saddle Cloth Interior



Eternal Blue Pearl
Available with Black Cloth Interior



Taffeta White
Available with Saddle Cloth Interior



Satin Silver Metallic
Available with Black Cloth Interior



Nighthawk Black Pearl
Available with Black Cloth Interior



Mojave Mist Metallic
Available with Saddle Cloth Interior

Interior Colors.



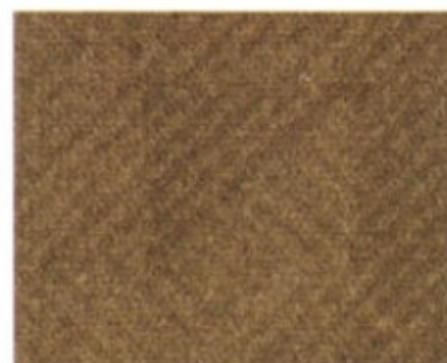
Black Cloth (LX)



Saddle Cloth (LX)



Black Cloth (EX)



Saddle Cloth (EX)

Specifications and Features.

Engine	2WD LX	4WD LX	4WD EX
Type: Aluminum-Alloy In-Line 4	*	*	*
Displacement (liters)	2.4	2.4	2.4
Horsepower @ rpm (SAE net)	160 @ 6000	160 @ 6000	160 @ 6000
Torque (lb.-ft. @ rpm)	162 @ 3600	162 @ 3600	162 @ 3600
Compression Ratio	9.6:1	9.6:1	9.6:1
Valve Train: DOHC i-VTEC™	*	*	*
Fuel System: Multi-Point Fuel Injection	*	*	*
Ignition System: Electronic w/Immobilizer	*	*	*
110,000-Mile Tune-Up Interval*	*	*	*
Drivetrain			
Type	FWD	Real Time™ 4WD	Real Time™ 4WD
Manual Transmission: 5-Speed		*	*
Automatic Transmission: 4-Speed (available)	STD	*	*
Final Drive Ratio (MT/AT)	NA/4.44	4.77/4.44	4.77/4.44
Body/Suspension/Chassis			
Body Type: Unit Body	*	*	*
Suspension: Front MacPherson Strut/ Rear Double Wishbone	*	*	*
Stabilizer Bar (mm, front/rear)	27.2/18.0	27.2/18.0	27.2/18.0
Variable-Assist Power Rack-and-Pinion Steering	*	*	*
Turning Diameter, Curb-to-Curb (ft.)	34.1	34.1	34.1
Power-Assisted 4-Wheel Disc Brakes	*	*	*
Anti-Lock Braking System (ABS)		*	*
Minimum Ground Clearance (in.)	8.1	8.1	8.1
Wheels	15"	15"	15" Alloy
Tires: All-Season M+S	P205/70 R15 95S	P205/70 R15 95S	P205/70 R15 95S
Exterior Dimensions			
Wheelbase (in.)	103.1	103.1	103.1
Length (in.)	178.6	178.6	178.6
Height (in.)	66.2	66.2	66.2
Width (in.)	70.2	70.2	70.2
Track (in., front/rear)	60.4/60.6	60.4/60.6	60.4/60.6
Curb Weight (lbs., MT/AT)	NA/3201	3258/3318	3287/3347
Front/Rear Weight Distribution (lbs., MT)	NA	1759/1499	1779/1508
Front/Rear Weight Distribution (lbs., AT)	1786/1415	1821/1497	1843/1504
Towing Capacity (lbs.)	1500	1500	1500
Interior Dimensions			
Headroom (in., front/rear)	40.9/39.1	40.9/39.1	38.9/39.1
Legroom (in., front/rear)	41.3/39.4	41.3/39.4	41.3/39.4
Shoulder Room (in., front/rear)	56.9/56.5	56.9/56.5	56.9/56.5
Hiproom (in., front/rear)	54.5/53.5	54.5/53.5	54.5/53.5
Cargo Volume (cu. ft., seat up/down)	33.5/72.0	33.5/72.0	33.5/72.0
Passenger Volume (cu. ft.)	106.0	106.0	106.0
EPA Mileage Estimates/Fuel Capacity			
5-Speed Manual (City/Highway)		21/25	21/25
4-Speed Automatic (City/Highway)	23/28 ¹	22/26	22/26
Fuel (gal.)	15.3	15.3	15.3
Exterior Features			
Dual Power Mirrors	*	*	Body-Colored
Power Moonroof w/Tilt Feature			*
Intermittent Rear Window Wiper/Washer	*	*	*
High-Mounted Taillights	*	*	*
Chrome Grille Accent	*	*	*
Remote Entry System	Accessory	Accessory	*
Green Heat-Rejecting Glass	*	*	*
Body Side Molding	*	*	*
Exterior Spare-Tire Carrier w/Tire Cover	*	*	*
Aluminum-Alloy Wheels	Accessory	Accessory	Including Spare
Rear Privacy Glass			*
Full-Swinging Tailgate w/Integrated Glass Hatch	*	*	*

*Does not apply to fluid or filter changes. See your owner's manual for details.

Interior Features	2WD LX	4WD LX	4WD EX
Air Conditioning w/Micron Air-Filtration System	*	*	*
Power Windows w/Auto-Up/Down Driver's Window	*	*	*
Power Door Locks	*	*	*
AM/FM Stereo Cassette w/CD Player (4x30 Watts), Clock and 4 Speakers	*	*	*
AM/FM Stereo Cassette w/6-Disc In-Dash CD Changer (4x30 Watts), Clock and 6 Speakers			*
Cruise Control	*	*	*
Driver's and Front Passenger's Airbags (SRS)	*	*	*
Dual Side Airbags	Available	Available	*
Front 3-Point Seat Belts w/Automatic Tensioning System	*	*	*
Adjustable Front Seat Belt Anchors	*	*	*
Rear 3-Point Seat Belts	*	*	*
LATCH (Lower Anchors and Tethers for Children)	*	*	*
Child-Proof Rear Door Locks	*	*	*
Reclining Front Bucket Seats w/Adjustable Head Restraints	*	*	*
Driver's Seat w/Manual Height Adjustment	*	*	*
Front-Seat Armrests	*	AT model	AT model
60/40 Split Rear Sliding Fold & Tumble Seats	*	*	*
Reclining Rear Seatbacks	*	*	*
Beverage Holders, Front and Rear	*	*	*
Retractable Center Tray Table	*	*	*
Sunglass Holder	*	*	*
Door-Pocket Storage Bins	*	*	*
Waterproof Rear Storage Well	*	*	*
Removable Folding Picnic Table	*	*	*
12-Volt Accessory Outlets, Front and Rear	*	*	*
Map Lights	*	*	*
Adjustable Steering Column	*	*	*
2-Speed/Intermittent Windshield Wipers	*	*	*
Driver's and Front Passenger's Vanity Mirrors	*	*	*
Floor Mats	*	*	*
Tachometer	*	*	*
Rear-Seat Heater Ducts	*	*	*
Remote Glass Hatch Release	*	*	*
Rear Window Defroster	*	*	*
Low-Fuel Indicator Light	*	*	*
Cargo Area Light	*	*	*
Cargo Area Grocery Bag Hooks	*	*	*
Cargo Hook	*	*	*

To make your CR-V truly stand apart, you can choose any of the quality **Genuine Honda Accessories** shown here: alloy wheels with wheel locks, body side cladding, running boards, fog lights, half nose mask, front grille trim, door visors and splash guards.

Accessories.

There's no better way to personalize, enhance and protect your new CR-V than with **Genuine Honda Accessories**. There are over a dozen quality items for you to choose from. Each has been carefully designed for your new CR-V to assure a **CUSTOM FIT** and to add to your vehicle's appeal and value. Some accessories, like the front splash guards, can help protect your CR-V and keep it looking like new a lot longer. Other items, like the roof-rack attachments, can expand your vehicle's already considerable versatility. Talk to your Honda dealer today and discover all the ways that you can make your new CR-V reflect even more of you.

You can store items and gear in the cargo area and keep them out of sight with a **RETRACTABLE CARGO COVER**. It's made of vinyl that is color-coordinated to match your new CR-V's interior, and will also help keep your vehicle neat and clutter-free.



If you simply have to take it all with you, be sure to equip your new CR-V with the available **TRAILER HITCH AND BALL**. Specially designed for the CR-V and easily installed, it enables you to tow up to 1,500 lbs.



¹Mileage figures shown for comparison only. Actual mileage may vary. **3-Year/36,000-Mile Limited Warranty:** Ordinary maintenance or adjustments, parts subject to normal wear and replacement, and certain items are excluded. See your Honda dealer for the terms and conditions of this limited warranty. ²Preliminary 2WD LX EPA mileage estimates determined by Honda. Final EPA mileage estimates were not available at the time of printing. **Always use seat belts and appropriate child seats. Children are safest in the rear seat.** Real Time is a trademark of Honda Motor Co., Ltd. Some features mentioned herein are not available in all areas. See your Honda dealer for details. Some vehicles may be shown with optional equipment. Available = Optional. NA = Not applicable. Specifications, features, illustrations and equipment shown in this brochure are based upon the latest available information at the time of printing. Although descriptions are believed correct, accuracy cannot be guaranteed. American Honda Motor Co., Inc., reserves the right to make changes at any time, without notice or obligation, in colors, specifications, accessories, materials and models. ©2001 American Honda Motor Co., Inc. Litho in U.S.A. 550M 10/2001.

