

2003 CADILLAC SEVILLE





BREAK THROUGH







BREAK THROUGH

Simple, bold strokes state the theme: Seville is about power and technology. The power of a muscle car. With sports car-like agility. An onboard computer system integrates Seville's advanced technologies to produce an immediate adrenaline rush. Precise steering control. And all-weather performance. Amid fine leather and selected woods, Seville creates an exhilarating driving experience.



SEVILLE STS. Even at rest, the authoritative dual exhausts (see left) are the tip-off. STS is a full-size performance sedan with the soul of the Cadillac LMP racecar. The muscle and grace of a 300-horsepower 4.6 liter Northstar V8. Speed-rated tires. An automatic that shifts like a stick. And the world's fastest-reacting suspension system.



SEVILLE SLS. Between Seville's distinctive rear-end treatment and its tungsten-halogen headlamps, SLS packs a rich payload of impressive technologies. Including all-speed traction control, four-wheel independent suspension, four-wheel disc brakes with ABS, speed-sensitive steering, and a 275-horsepower Northstar V8.



WELL-ROUNDED PERFORMANCE. As its sporty seven-spoke aluminum wheels suggest, Seville has an athletic response to whatever lies down the road. The StabiliTrak stability enhancement system monitors and responds to vehicle dynamics in real time. And an electronic rear-level control system compensates for the weight of luggage or extra passengers. For more, visit cadillac.com.



PAGES 21

TEMP

RPM x 1000

MPH

FUEL

TRIP A 0.0 MI

FEATURE PROGRAMMING

811 MI



AIR BAG

DSPL MODE

RESET TRIP A/B

INFO

INFO RESET

TEMP

END

VOL

SEL

ACC ON START



ESET
RIP
B

LIGHTS
ON

TEMP

H

TRIP A 0.0 MI

FEATURE PROGRAMMING

877 MI

RPM x 1000

MPH

FUEL

INFO

INFO
RESET

ON
OFF

TEMP

END

VOL

SEL

CRUISE
ON/OFF

CRUISE
RESUME

BAND

CD

DVD

TUNE
SEEK

PWR/VOL

FRONT SEAT 3:16
FM1 98.1 MHz
Map display showing streets and navigation route

REPEAT

MAP

ROUTE

SETUP

TILT

AUTO

75°F

AUTO
MODE

PASS 75°F

FRONT

REAR

TEMP ON/OFF

MODE

A/C

TEMP ON/OFF



INTERIOR FEATURES AND DETAILS

Seville presents a roomy cockpit with leather seating areas. Both driver and front passenger seats feature power 10-way adjusters/recliners (with four-way power lumbar support). Programmable features allow you to set preferences for everything from automatic door lock operation to the passenger mirror curb view. A large white-on-black analog speedometer and tach register the effects of Seville's power.

1 Perforated Leather Inserts (STS) 2 Power Lumbar Support

3 10-Way Power Adjustment



ELEGANT PERFORMANCE TOUCH.
Wood trim is available on both STS and SLS as part of an option group. It brings the warm, natural feel of wood to the steering wheel and shifter. The smooth, sculpted shapes provide an intriguing interface for Seville's exhilarating driving qualities.



CIVILIZED ENVIRONMENT.
Heated seating areas are standard for both front and rear outboard positions. The 425-watt Bose® digital music system with RDS capability is standard on STS and available on SLS. XM Satellite Radio is available on all Seville models (activation and service fees extra)* – 100 channels with digital-quality sound anywhere in the 48 contiguous states.

*Visit www.gm.xmradio.com for details.

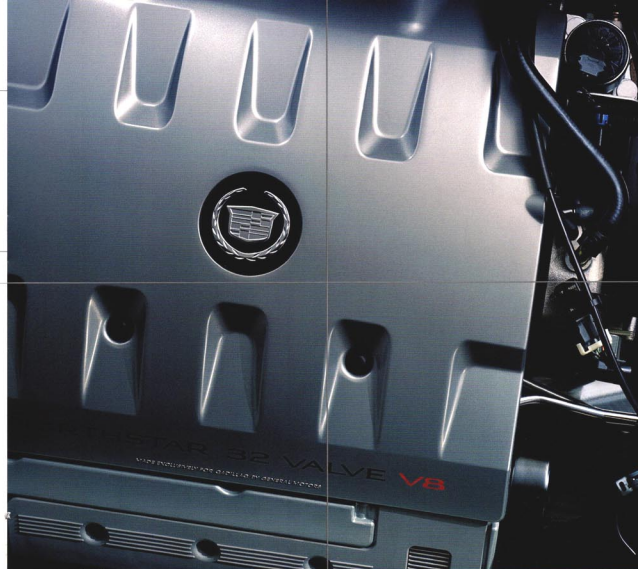
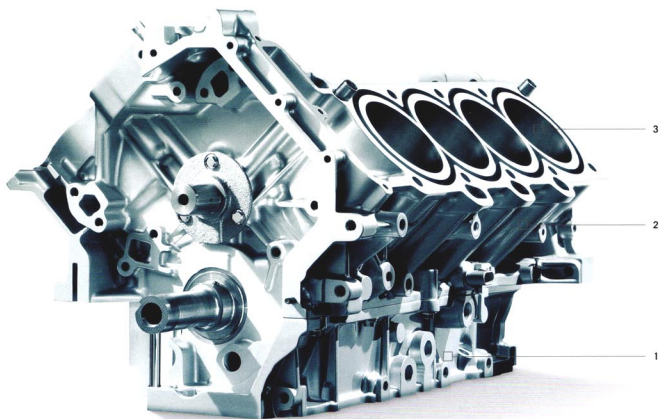


AVAILABLE DVD NAVIGATION.
The system uses GPS (global positioning system) satellites to pinpoint the vehicle's location on a 6.5" touch screen. A single DVD covers the continental U.S. and portions of Canada. Voice/text guidance helps keep you on course to your destination. For more on DVD navigation and other advanced Seville technologies, visit cadillac.com.

PERFORMANCE AND HANDLING

Seville's 4.6 liter Northstar V8 shares passion and inspiration with the race-version V8 in the Cadillac Northstar LMP racecar. Each engine uses lightweight aluminum blocks and cylinder head castings, four-valve combustion chambers, chain-driven dual overhead camshafts, and electronic engine management. Northstar engines deliver an instantaneous response to the driver's right foot.

1 Cast Aluminum Block 2 90-Degree Cylinder Angle 3 4.6 Liter Displacement



POWER AND GRACE. Specifically, the figure is 300 horsepower in Seville STS and 275 horsepower in Seville SLS. With advanced computer controls constantly monitoring and precisely adjusting the engine and transmission to match driving conditions and driver commands, Seville's 4.6 liter Northstar V8 achieves high levels of performance without breaking a sweat.



Seville's 32-valve double-overhead-cam 4.6 liter Northstar V8s are designed to go up to 100,000 miles before the first scheduled maintenance.* Northstar technology makes Seville quiet and elegantly smooth. For more on the 4.6 liter Northstar V8, visit cadillac.com.

*Maintenance needs vary with different uses and driving conditions. See Owner's Manual for more information.



PERFORMANCE ALGORITHM SHIFTING (PAS). A perfect complement to STS's 300 horses, PAS combines the convenience of an electronically controlled 4-speed automatic transmission with the response and performance of a manual gearbox. It tailors transmission shift points to your driving style.



ADVANCED TECHNOLOGY
IMPRESSIVE AGILITY

Seville's onboard computer system integrates engine, traction control, ABS, speed-sensitive rack-and-pinion steering, suspension, and stability enhancement to work seamlessly and instantaneously. They respond to your inputs and connect you to the car's driving dynamics. Meaning Seville will have you exploring new and different worlds. Particularly when they involve twisty little roads.

1 What Seville Was Designed For



MAGNETIC RIDE CONTROL.

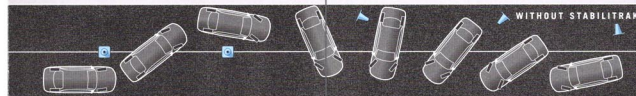
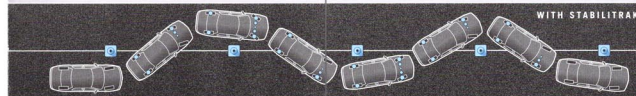
The world's fastest-reacting suspension system gives STS a performance edge you can feel. It almost instantly adjusts suspension settings to your steering wheel input or to changes in the road surface. This improves balance, handling, and body control—without generating harshness.

MAGNASTEER. This is Seville's acclaimed speed-sensitive power steering system. It varies the level of power-assist, with speed, given to Seville's precise rack-and-pinion mechanism, enhancing control on the highway and reducing steering effort in tight parking spots.



ALL-SPEED TRACTION CONTROL.

The system works with Seville's four-wheel ABS to help reduce wheel spin during acceleration on slippery surfaces. Seville's engine generates copious amounts of power. Traction control assists you in applying it.



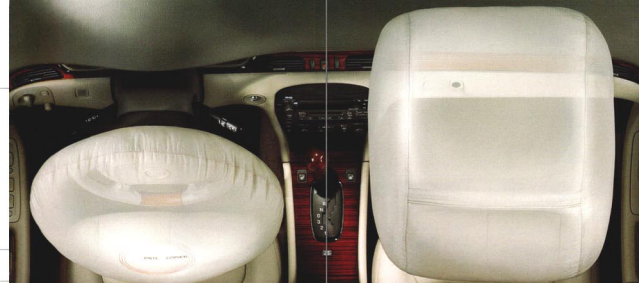
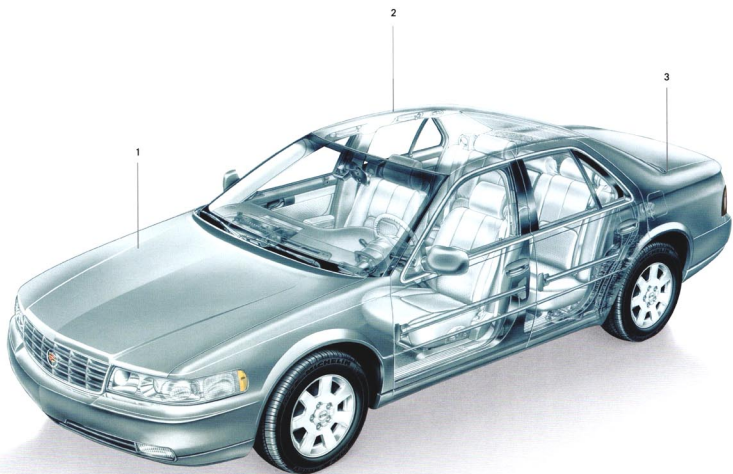
STABILITY ENHANCEMENT.

Seville benefits from the StabiliTrak integrated stability enhancement system. When it detects that the vehicle is not responding adequately to steering input, StabiliTrak applies a quick force to the appropriate brake to help bring the car back on track. For more, visit cadillac.com.

SAFETY AND SECURITY

Seville helps protect its occupants with a safety cage and a comprehensive array of safety and security technologies. But your first line of defense is crash avoidance and Seville's muscular performance. All-speed traction control, StabiliTrak, and ABS constitute some of the foremost collision-avoidance features available on four wheels.

1 Front Crush Zone 2 Passenger Safety Cage 3 Rear Crush Zone



PROTECTED ENVIRONMENT. Seville features driver and front passenger side-impact air bags* as well as the usual front air bags. Other occupant protection measures include automatic door locks, child security door locks and door retention components, and passenger-guard inside door lock handles. For more on Seville safety and security features, visit cadillac.com.

*Air bag inflation can cause severe injury or death to anyone too close to the bag when it deploys. Be sure every occupant is properly restrained.



A NOTE ON CHILD SAFETY.

Always use safety belts and proper child restraints, even in vehicles equipped with air bags. Children are safer when properly secured in the rear seat. Never place a rear-facing infant restraint in the front seat of any vehicle equipped with an active air bag. See your Owner's Manual and child safety seat instructions for more safety information.



HELP BUTTONS. Seville's remote keyless entry includes lock, unlock, trunk release and fuel filler door release features. When you press the red emergency button on your mirror and connect to a trained OnStar Advisor, they will immediately contact emergency assistance. The one-year OnStar Directions & Connections Plan is renewable and also includes Stolen Vehicle Tracking and Roadside Assistance.**

**Visit www.onstar.com for system limitations and details.



ULTRASONIC REAR PARKING ASSIST SYSTEM. When backing up at less than 3 mph, ultrasonic sensors integrated in the rear bumper pick up certain stationary objects directly behind you. Audible signals let you know how close you are.

SEVILLE FEATURES AND OPTIONS

Interior Features and Amenities

	ST1	ST2
AIR BAGS*		
Driver and front passenger, front-impact	■	■
Driver and front passenger, side-impact	■	■
AUDIO SYSTEMS		
DVD navigation and Bose digital music system, single DVD for map coverage in continental U.S. and portions of Canada; GPS-based, 6.5" touch screen, voice or text guidance,** DVD video capabilities (vehicle in Park position only), and voice recognition; requires 6-disc CD changer (n.a. with cassette)	□†	□†
Premium AM/FM stereo/cassette, single-slot CD player, TheftLock, and 8 speakers	■	–
Bose digital music system, AM/FM stereo/cassette, CD player, weatherband reception, 425 watts total power, AudioPilot® noise compensation technology, digital signal processing, Radio Data System, TheftLock, and Bose 8-speaker system	□†	■
Cellular phone integration kit, hands-free, tri-band	□†	□†
CD changer, 6-disc	□†	□†
XM Satellite Radio (activation and service fees extra)	□	□
CLIMATE CONTROL SYSTEM		
Dual-zone electronic climate control with individual settings for driver, front, and rear compartments	■	■
CONSOLE		
Full floor console with floor shifter, storage	■	■
DOOR LOCKS		
Power automatic programmable locks with central locking; rear child safety lock	■	■
INSTRUMENT PANEL		
Analog clock and gauges	■	■
Driver information and vehicle status readouts	■	■
Memory Package automatically recalls setting for 2 drivers based on their individual remote keyless entry key fob; the recall function remembers the position of the 10-way driver's seat (including lumbar settings), driver's seat exit seating position, exterior rearview mirror preference, climate control settings, and radio station presets for 2 drivers	□†	■
MIRRORS		
Electrochromic inside rearview mirror	■	■

ONSTAR COMMUNICATION SYSTEM††

One-year OnStar Directions & Connections Plan includes Route Support to destinations such as nearby gas stations, ATMs or hotels; Ride Assist when the subscriber is incapable of driving; OnStar Advisors who can help with information/convenience services by suggesting a restaurant or even making hotel reservations, plus...	□	□
One-year OnStar Safe & Sound Plan includes services such as air bag deployment notification, remote door unlock, stolen vehicle tracking, and remote diagnostics	■	■
OnStar Personal Calling; a hands-free wireless phone integrated into the vehicle	□	□
OnStar Virtual Advisor; a hands-free, voice-activated service that uses Personal Calling minutes to access location-based traffic and weather reports, news and sports updates, stock quotes, e-mail, and more	□	□
PROGRAMMABLE FEATURES		
Interior features give you the ability to set preferences for automatic door lock operation, the activation and notification of the remote keyless entry and alarm systems, and the operation of the perimeter lighting system and passenger mirror curb view	■	■
SEATING		
Heated front and rear seating areas (outboard positions)	■	■
Lumbar support: 4-way power driver and front passenger	■	■
Leather seating areas	■	■
Power 10-way adjusters/recliners: driver and front passenger	■	■
SAFETY BELTS		
Lap and shoulder belts for all positions with belt-to-seat mounting for driver and front passenger	■	■
STEERING WHEEL		
Leather-trimmed, tilt-adjustable with fingertip steering wheel controls for audio and climate	■	■
Power tilt and telescoping	□†	–
PASS-KEY III THEFT-DETERRENT SYSTEM		
PASS-Key III theft-deterrent system	■	■
TRUNK		
Carpeted with power release	■	■
Emergency deck lid release	■	■
WIPERS		
Rainsense GEN II	□†	–
WOOD TRIM PACKAGE		
Steering wheel and shifter	□†	□†

Exterior Features

	ST1	ST2
LIGHTING		
Daytime running lamps with Twilight Sentinel automatic operation and wiper-activated automatic-on feature, tungsten-halogen headlamps with flash-to-pass feature, front cornering lamps, and illuminated entry system	■	■
Wiper-activated headlamps	■	■
High-intensity discharge (HID) headlamps	–	□†
MIRRORS		
Electrochromic automatic day/night driver's side rearview mirror	□†	■
Driver and Passenger mirrors, electronically powered and heated	■	■
SUNROOF		
Glass with sunshade and one-touch express-open feature	□†	□†
TIRE PRESSURE MONITORING		
Tire pressure monitoring	–	□†
ULTRASONIC REAR PARKING ASSIST		
Ultrasonic Rear Parking Assist	■	■
WHEELS AND TIRES		
7-spoke, 16" cast aluminum wheels with P225/60R16 tires	■	–
7-spoke, 16" chrome aluminum wheels with P225/60R16 tires	□†	–
7-spoke, 17" chrome aluminum wheels with P235/55HR17 tires	–	■
Powertrains		
ENGINES		
4.6 liter Northstar V8 engine with 275 horsepower at 5,600 rpm and 300 ft-lbs torque at 4,000 rpm	■	–
4.6 liter Northstar V8 engine with 300 horsepower at 6,000 rpm and 295 ft-lbs torque at 4,400 rpm	–	■
Hydra-Matic 4-speed automatic transmission with overdrive and electronic shift control	■	■
FRONT-WHEEL DRIVE		
Front-wheel drive	■	■
ENGINE BLOCK HEATER		
Engine block heater	□	□
Chassis & Suspension		
ALL-SPEED TRACTION CONTROL		
All-speed traction control	■	■
BRAKES		
4-wheel disc brakes with anti-lock braking system	■	■
MAGNETIC RIDE CONTROL		
Computer-controlled active suspension system with adjustable, computer-controlled shock absorbers	–	■
ELECTRONIC REAR-LEVEL CONTROL SYSTEM		
Electronic rear-level control system	■	■

STABILITRAK

Computer-controlled stability enhancement system ■ ■

Dimensions & Capacities

SEATING CAPACITY: 5 PASSENGERS; INTERIOR VOL. 119.8 CU.FT. (3.39 CU.M.)		
	Front	Rear
Head room	38.2" (969 mm)	38.0" (966 mm)
Leg room	42.5" (1079 mm)	38.2" (970 mm)
Hip room	55.6" (1411 mm)	57.5" (1460 mm)
Shoulder room	59.1" (1501 mm)	58.0" (1474 mm)

Premium Performance Package

PREMIUM PERFORMANCE PACKAGE
Includes: Wood trim, 6-disc CD changer, 17" wheels, HID headlamps, DVD navigation, phone integration kit, and tire pressure monitor*



ST1 STANDARD:
Open 16"x7" cast aluminum



ST1 OPTIONAL:
Open 16"x7" cast aluminum, chrome finish



ST2 STANDARD:
7-spoke, 17"x 8.5" cast aluminum, chrome finish



Wheelbase 112.2"

Length 201"

Width 74.7"

Height 55.4"

■ STANDARD □ AVAILABLE – NOT AVAILABLE

* Always use safety belts and proper child restraints, even in vehicles equipped with air bags. Children are safer when properly secured in a rear seat. See Owner's Manual for more safety information.

** Limited detailed routing. Visit your dealer for further information.

† Available only in Option Group.

†† One-year OnStar Directions & Connections Plan is standard on Seville. Existing OnStar service agreement and prepaid calling minutes required for Personal Calling. Personal Calling service required for Virtual Advisor. Personal Calling and Virtual Advisor not available in selected markets. To function properly, OnStar services require vehicle electrical system and wireless service to be available and operating. OnStar uses existing emergency service providers and wireless and satellite technologies. Visit www.onstar.com for system limitations and details.

Not available at start of production.

We have tried to make this catalog comprehensive and factual. We reserve the right, however, to make changes at any time, without notice, in the information contained in this catalog. Since some information may have been updated since the time of printing, please check with your Cadillac dealer for complete details. Any variations in colors shown are due to reproduction variation in the printing process.

Cadillac reserves the right to lengthen or shorten the model year for any product for any reason, or start and end model years at different times.

Note: Some photographs in this catalog show vehicles with optional equipment.

GM ACCESSORIES

Visit Goodwrench.com for information on genuine GM Accessories for Seville.

ENGINES

Sevilles are equipped with engines produced by different operating units of GM, its subsidiaries, or suppliers to GM worldwide.

ASSEMBLY

Seville and its components are assembled and produced by different operating units of General Motors, its subsidiaries, or suppliers to GM worldwide. We sometimes find it necessary to produce Sevilles with differently sourced components than originally scheduled. Since some options may be unavailable when your vehicle is assembled, we suggest that you verify that your vehicle includes the equipment you ordered or, if there are changes, that they are acceptable to you.

UPDATED SERVICE INFORMATION

Cadillac regularly sends its dealers useful service bulletins about Cadillac products. Cadillac monitors product performance in the field. We then prepare bulletins for servicing our products better. Now you can get these bulletins too. Ask your dealer. To get ordering information, call toll-free 1-800-551-4123.

A NOTE ON CHILD SAFETY

Always use safety belts and proper child restraints, even in vehicles with air bags. Children are safer when properly secured in a rear seat. Never place a rear-facing infant restraint in the front seat of any vehicle equipped with an active air bag. See your vehicle Owner's Manual and child safety seat instructions for more safety information.

WARRANTY/CORROSION PROTECTION

The GM four-year/50,000-mile no-deductible Gold Key bumper-to-bumper limited warranty covers repairs for any new Seville, including parts and labor, to correct any defects in material or workmanship occurring during the warranty period. The complete vehicle will be covered for four years or 50,000 miles, whichever comes first, except adjustments and normal maintenance items. Sevilles are designed and built to resist corrosion. All body sheet metal components are warranted against rust-through corrosion for six years or 100,000 miles. Application of additional rust-inhibiting materials is not required under the corrosion coverage and none is recommended. See your Cadillac dealer for terms of these limited warranties.

SAFETY AND SECURITY

The following are just some of the standard features found on the 2003 Seville models unless otherwise noted:

OCCUPANT PROTECTION

- Automatic door locks
- Child security door locks and door retention components
- Manual lap/shoulder belts and air bags, driver/front passenger – front and side
- Passenger-guard inside door lock handles
- Power window lockout
- Safety belt cinch capability for child seats

SECURITY

- Anti-lockout feature
- Audible theft-deterrent system
- Battery rundown protection
- Laser-etched VIN plate
- PASS-Key III theft-deterrent
- Remote deck lid release
- Remote inside hood release
- Remote keyless entry
- Stolen vehicle tracking/emergency communication

CRASH AVOIDANCE

- Anti-lock brakes, front and rear
- Automatic daytime running lamps
- Automatic windshield wipers (STS)
- Brake/transmission shift interlock
- Cornering lamps
- Disc brakes, front and rear, audible wear indicator
- Door warning lamps and reflectors
- Fog lamps
- Front, side, rear window defoggers
- Halogen headlamps
- Inside electrochromic rearview mirror
- Maintenance-free battery
- Outside power rearview mirrors, heated, electrochromic
- Stability enhancement
- Steering wheel controls
- Tinted glass windshield
- Tires with built-in tread wear indicators
- Traction control
- Wiper-activated exterior lamps

cadillac.com

Visit cadillac.com for the most current information regarding Seville technology, features, pricing, and special events.

CADILLAC, CADILLAC badge, CADILLAC ROADSIDE SERVICE, SEVILLE, GENERAL MOTORS, GM, the GM EMBLEM, NORTHSTAR, STABILITRAC, SOLAR-RAY, and TWILIGHT SENTINEL are registered trademarks, and BREAK THROUGH and RAISENSE are trademarks of the General Motors Corporation. CADILLAC OWNER PRIVILEGES is a service mark of the General Motors Corporation. THEFTLOCK and PASS-KEY are trademarks of Delphi Technologies, Inc. ONSTAR, the ONSTAR emblem, and the ONSTAR button are registered trademarks of ONSTAR Corporation.

Litho in U.S.A. 8/02 ©2002 GM Corp. All rights reserved.

CADILLAC OWNER PRIVILEGES

By driving a Seville, you're part of a select group that deserves special privileges.

These include 24-hour roadside service (1-800-882-1112) and trip interruption protection. Free roadside services include: jump-starts, towing, lockouts, fuel

delivery (fuel charges extra), and flat tire changes. Trip interruption protection

can reimburse you for expenses incurred as a result of a warranted repair that interrupts your travel. Alternate transportation is also available whenever your

vehicle is in for warranted repairs. You can also rely on the GM bumper-to-bumper limited warranty. All this coverage is in effect for the first 48 months or

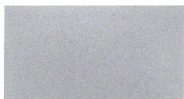
50,000 miles of ownership, whichever comes first. See your dealer for complete details, terms, and conditions of these programs and the GM limited warranty.

Another complimentary service for Cadillac owners is the Cadillac Center at My GMLink, a one-stop resource to enhance your Cadillac ownership experience.

Exclusive member benefits include online service reminders, vehicle maintenance tips, online Owner's Manual, special privileges and more. Sign

up today at www.mygmlink.com.

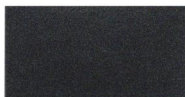
SEVILLE EXTERIOR COLORS



Sterling



Blue Onyx



Thunder Gray†



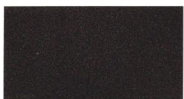
Forest Green†



Sable Black



Cashmere



Bronzemist



Crimson Pearl*



White Diamond*

SEVILLE INTERIOR COLORS



Dark Gray Leather**



Neutral Shale Leather



Black Leather

