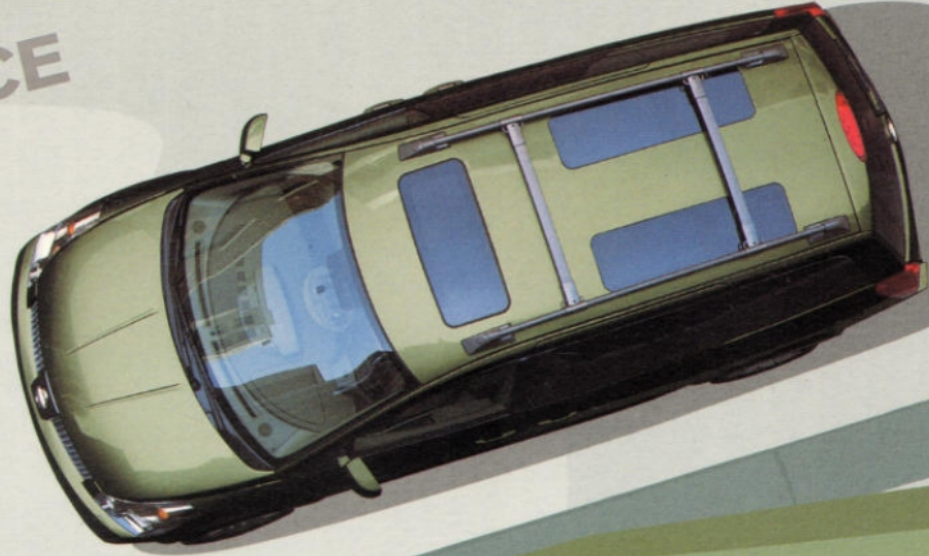


# A PLACE WITH SPACE

Entertainment  
Versatility  
Storage



04 NISSAN QUEST



1 2 3

Welcome to a place where getting in and out is as easy as 1-2-3. Your 2004 all-new Nissan Quest.

1. It starts with a memory seat system that tailors Quest to your personal fit. You can program the driver's seat, the outside mirrors and even the adjustable pedals. And to make your life even easier, it's all connected to the keyless remote entry system. Simply click the unlock button and everything automatically slides into your pre-programmed position. (Available on 3.5 SE.) But the story doesn't stop here. The remote transmitter also triggers both power sliding doors. (Passenger-side only on 3.5 SL; not available on 3.5 S.) Opens the power rear hatch (3.5 SL, 3.5 SE). Plus rolls down the driver's and front-passenger's windows.
2. Quest's available dual power sliding doors open especially wide for easier entry/exit. You can activate the doors via the overhead console, side pillar switch or your remote transmitter. The power rear hatch also opens wide for easier access. And the available second-row seats? They tip forward for – you guessed it – easier access to the rear.
3. Everyone gets a helping hand inside Quest – no matter what their size. Side pillar handles are longer and tapered at the bottom to help even the littlest hands get a better grip. Our inspiration? Tricycle handlebars.



Jump in  
Hop out  
It's easy once you try  
Hold on  
Look up  
Something's floating in the sky  
Could it be a fly?





Go first-class with an overhead console that's sure to remind you of jet travel. Along the way, don't forget to enjoy the view with Quest's unique available SkyView™ roof.

1. Keep your rear passengers cool with available air vents that rotate 360° and offer a shut-off capability if the temperature dips too much.
2. A Quest cabin filled with natural light is a beautiful thing, but if you want less sky and more coverage, pull the sliding shades. (On SkyView roof-equipped models.)
3. The rear roof console features up to two available flip-down monitors (part of the Nissan DVD Entertainment System), plus four air vents, four overhead lights, up to three large storage bins and one smaller bin designed to hold a remote. The only thing missing is a button to call the flight attendant.
4. Advanced adjustable, airplane-like spotlights provide individual illumination for second- and third-row passengers.
5. Rear heating/air conditioning controls feature fan speed on one knob and temperature/mode on the other. The thoughtful location allows rear passengers to control rear air conditioning independently from the front.



Who needs a roof when you've got blue sky  
 Who needs a roof when you've got a kite  
 Who needs a roof when there's so much fun outside

Look

Look for me

I hold a special light

*Quest 3.5 SE shown in Beige Leather-appointed interior with optional equipment.*



- 1
- 2
- 3
- 4

Stop boredom before it starts. Quest's DVD Entertainment System will keep the kids happy and content, mile after mile.

1. Available Dual Media Playback is a parent's best friend. It lets front and rear passengers listen to separate audio sources at the same time. So while your kids in the back are listening to the radio with headsets, you can enjoy your own CD up front.
2. The available Nissan DVD Entertainment System has it all. Two available flip-down monitors. And auxiliary inputs that can connect your kids to practically any video game system or camcorder for instant playback. This could be your big break.
3. A DVD remote control operates from any seat inside. Or none, depending on how the little ones are behaving.
4. Keep the clutter (and stress) down with wireless headsets. They work with both the Nissan DVD Entertainment System and Dual Media Playback. (Two headsets included on models equipped with the Nissan DVD Entertainment System.)



Light up the screen  
With a movie, a game

Light up both screens  
You'll have fun either way

What, Mr. Sun  
You have something to say?  
A secret toy is waiting to play



Revolutionary second-row seating that folds down. Amazing Fold\_Away™ third-row seating that disappears altogether. Time to check out the possibilities.

1. Starting with seven of your closest friends and family members – belted in, of course – there's still plenty of room in the cargo area. Here's a tip: You can slide the second-row seating forward or back, accommodating whoever has the longest legs – second- or third-row passengers.
2. Option two shows the Fold\_Away third-row bench disappearing completely. Just pull some levers and watch the third row fall seamlessly into the floor, giving you a completely flat surface for cargo. (Folding second- and third-row seats are available in every Quest.)
3. The ultimate, however, has to be second-row seats that fold nearly flat, so you never have to remove them. That leaves you and your partner in the front two seats with the second-row chairs folded flat, the third row folded into the floor, and up to 148.7 cubic feet of flat space sitting quietly behind you. Should you experience the need to carry 4' x 8' sheets of plywood (or any similarly sized material), Quest can fulfill that desire, too.

1

2

3

Cargo shown for display purposes only. Nissan recommends that all loose items be secured when transported.

How many ways can you move a seat?  
How many colored balls do you see?

One moves the seat up, two moves it back

Three tilts them forward

Four makes them disappear  
Right onto the floor

Five is for the third row  
That falls flat like the ground

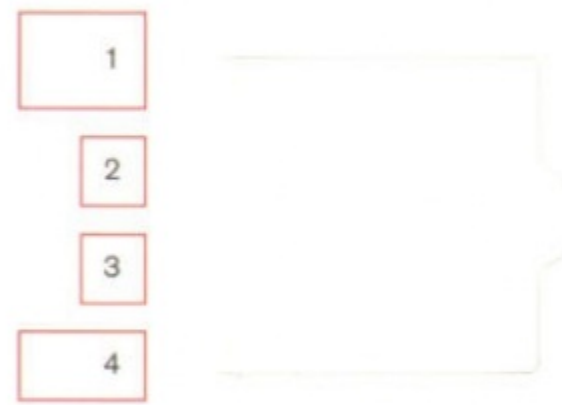
Now who do you think could be  
Playing round and round?

Quest 3.5 SE shown in Beige Leather-appointed interior with Fold\_Away Seat Package.



Quest holds practically anything you can think of. Including dreams.

1. There's plenty of room to dream here. With the second- and third-row seats folded down, Quest can accommodate items as large as 4' x 8' (with liftgate closed). So the next time you have an urge for those wide-screen TVs, go for it. Entertainment is big in Quest.
2. A flip-down cup holder that doubles as a snack tray is as convenient as fast food is fast. Eight more cup holders are strategically positioned throughout Quest, giving you a total of ten handy, dandy beverage storage devices.
3. This is one coat hook that can carry a load. Designed to hold multiple hangers – we've counted up to eight – Quest's retractable hook keeps all your dry cleaning in perfect order. (Two hooks on 3.5 SE.)
4. Spilled shopping bags don't belong anywhere. Especially in the cargo area. That's why you'll find six sturdy hooks behind the third row. For more extensive shopping sprees, Quest offers three additional hooks behind each front seat.



Cargo shown for display purposes only. Nissan recommends that all loose items be secured when transported.



Everything in  
That once was out  
With so much space  
It all has a place

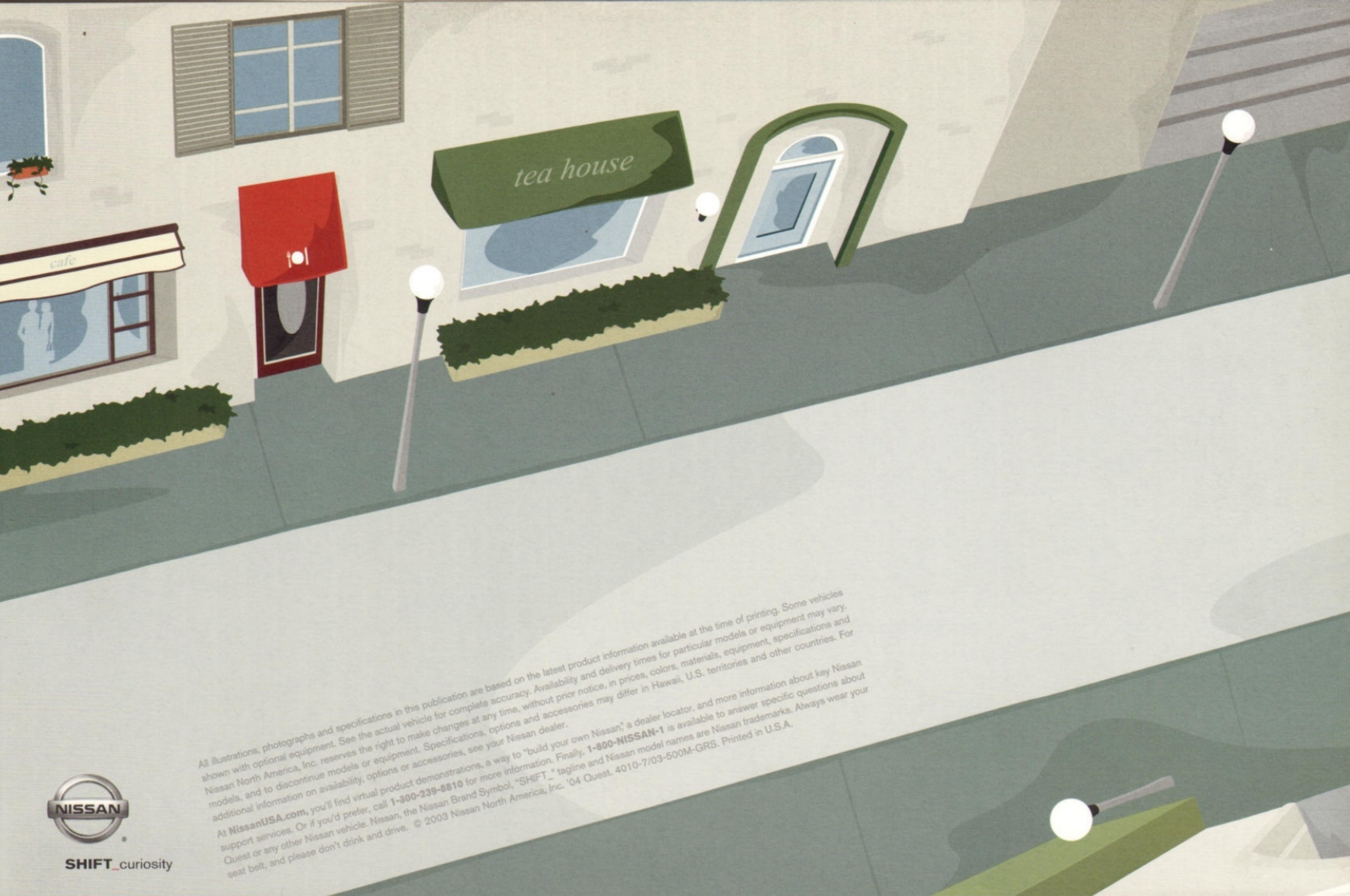
Space  
Place  
Room  
Varoom

Up to the kite  
Flying next to the sun  
Shining on the green grass  
Where colored balls roll

One by one  
Chased by a brown puppy  
Who loves to stay out  
When everything's in



Quest 3.5 SL shown in Green Tea with optional equipment.



All illustrations, photographs and specifications in this publication are based on the latest product information available at the time of printing. Some vehicles shown with optional equipment. See the actual vehicle for complete accuracy. Availability and delivery times for particular models or equipment may vary. Nissan North America, Inc. reserves the right to make changes at any time, without prior notice, in prices, colors, materials, equipment, specifications and models, and to discontinue models or equipment. Specifications, options and accessories may differ in Hawaii, U.S. territories and other countries. For additional information on availability, options or accessories, see your Nissan dealer.

At [NissanUSA.com](http://NissanUSA.com), you'll find virtual product demonstrations, a way to "build your own Nissan", a dealer locator, and more information about key Nissan support services. Or if you'd prefer, call 1-800-239-8810 for more information. Finally, 1-800-NISSAN-1 is available to answer specific questions about Quest or any other Nissan vehicle. Nissan, the Nissan Brand Symbol, "SHIFT\_" tagline and Nissan model names are Nissan trademarks. Always wear your seat belt, and please don't drink and drive. © 2003 Nissan North America, Inc. '04 Quest. 4010-7/03-500M-GRS. Printed in U.S.A.



SHIFT\_curiosity

## LIFE+STYLE

### Showcasing:

- Design
- Performance
- Safety
- Colors/Fabrics
- Specs



04 NISSAN QUEST



### Raise your happiness quotient.

Get together with friends. Plant a tree. Vote. Rent foreign films. Go for a long drive by yourself. Carpool. Embrace style. Take your daughter to lunch. Nap. Pet an iguana. Sing with the windows down. Make to-do lists. Learn self-defense. Meditate. Carry a toothbrush. Carry a star map. Teach yourself Spanish. Reject stereotypes. Drink lots of water. Volunteer. Affirm your inner power. Give people more space. Get the all-new 2004 Nissan Quest.

*Quest 3.5 SE shown in Smoke.*



## MANAGING TIME IN MPH

**i** Day planners may be great for the office, but what do you do behind the wheel?

We all face the same 24-hour day. But how we manage that time is often the difference between feeling productive and feeling frustrated. So we've applied some time-management principles to what can be a very time-consuming activity: Driving. The following tips were designed with one efficient vehicle in mind. The 2004 Nissan Quest. In particular, the dash of the 2004 Nissan Quest. A study in order and control.



## TimeTips x9

- no. 01. Nothing beats a daily to-do list that's always in view. Better yet, clip those hard-to-get concert tickets or a picture of your loved ones just above the steering wheel and drive happy.
- no. 02. Declare a truce on the war over cabin temperature. Available Dual Zone Automatic Temperature Control (ATC) offers individualized temperature settings for the driver and front passenger.
- no. 03. Quest's Information Center is a virtual rolling PDA. Here, you can program climate zones. Choose your preferences. Get instant reports on fuel economy, driving distance, driving time, average speed, oil and oil filter maintenance, tire rotation and (the sometimes critical) distance to empty. Plus monitor the status of Quest's most advanced systems.
- no. 04. Place your phone in the cell-phone holder and you'll never scramble (and potentially lose a call) again. There's even a concealed power outlet for charging your phone.
- no. 05. Track your progress on Quest's available DVD-based Nissan Navigation System, complete with patented three-dimensional Birdview.<sup>™</sup>\* Use the quick guide feature to find the nearest ATM, gas station or restaurant.
- no. 06. Keep your eyes on the road. The centrally located gauges help. They also allow you to place the steering wheel in a more comfortable position without losing sight of the gauges.
- no. 07. Never pick the contents of your purse off the floor again. A convenient hook on the side of the front passenger's seat keeps your purse (or gym bag) within easy reach.
- no. 08. Organization without storage is like a minivan without cup holders. Quest gives you a generous storage compartment on top of the dash\*\* with your own pen and pad holder, plus lower dash storage for both the driver and front passenger.
- no. 09. An available digital Bose<sup>®</sup> audio system, with in-dash 6-CD changer, 265 watts of precision engineering, ten speakers, six channels of customized equalization and signal processing might not sound like a timesaver, but consider for a moment the prospect of a six-hour drive. That's when you want everything this audio system can deliver, including RDS (Radio Data System), a feature that can display the name of the band or artist.

\* Factory-installed option. Never program while driving. Requires accurate GPS service to be available and operating for features to function properly. Mapping may not be detailed in all areas or reflect current road regulations. Some Nissan dealers may not appear on the current mapping areas. Periodic updates to the DVD-ROM will be available for an additional cost. See your Nissan dealer for details.

\*\* Top-of-the-dash storage should remain closed when the Quest is in motion.

<sup>™</sup> Birdview is a trademark of Xanavi Corporation.



# FASHION REVIEW

**Right:** This chair is as comfortable as it is modern-looking. Lines are sleek and refined. Shapes generous. And the level of craftsmanship simply extraordinary. Available in cloth or leather-appointed.

**Opposite and above:** Nothing escapes the eye of a Quest designer. Witness the contoured door handle you see here. Even interior colors, grains and textures reflect a view that is unmistakably contemporary and upbeat.

**"I was always thinking that Quest should be modern. Very innovative. Very unexpected."**

**Opposite and below:** Quest never loses its edge. Especially in the details. Note the lip of material lining the seat. We call it the cube edge. You'll call it the ultimate finishing touch. For more on the unique grain of this leather, see our exclusive interview to the right.



## ShopTalk

 One-on-one with Anke Mazzei, Color Designer, Nissan Design America, Inc.

**How did you develop your "bag concept" as the inspiration for Quest's interior?**

Bags are so fashionable and functional. And they speak volumes about the person. When we first talked to women, especially younger women who just had their first baby, they kept saying how they didn't want to be seen as just "Mom." They viewed their lives as so much more. On one hand, they saw themselves as successful and working. But there was also this health- and body-conscious aspect of their personality. And play. And socializing. Using a range of bags like the briefcase, gym bag, beach bag, backpack and evening bag was just a natural. And turned out to be the perfect inspiration for choosing Quest's interior colors and materials.

**How did you choose your colors?**

Well, the beige was inspired by Asian craftsmanship. And in our minds, took on the shape of a suitcase. The gray is more reminiscent of the sporty, techy materials found in backpacks. The rouge, however, was closest to the core concept for Quest. It's more intriguing and appeals to both men and women. I just kept thinking of this really stylish Mom going out to the theatre with her handbag, lipstick and jewelry.

**The grain on the rouge, leather-appointed interior is so high-end looking. Was that difficult to achieve?**

It was definitely challenging. I knew I wanted this grain for the rouge interior. You see details like this on high-fashion bags. Usually European. But it's an expensive process. And complicated. Then one day, a leather supplier showed up with a tiny sample that I thought was just perfect. It had a wonderful grain. Even going horizontal. In fact, if you look at the headrests, they remind you of a handbag.





## THE NEW URBAN RETREAT.

Capacity: 7\*  
Area: 211.4 cubic feet

Description: Famous for its unique accommodations, Quest tops our list of tasteful retreats. When visiting, be sure to check out the Rouge Room. Exceptionally spacious yet cozy, the Rouge Room features movable interior pieces for supreme versatility. In fact, you can achieve practically any configuration with minimal effort. Press a lever on the side of the second-row seat and watch in quasi-amazement as it falls nearly flat without your having to remove any seats at all. Even the Fold\_Away™ third row disappears. Increasing your options for storage and enjoyment. Perfect for couples or families looking to stretch out.

\*With Fold\_Away Seat Package.  
Cargo shown for display purposes only. Nissan recommends that all loose items be secured when transported.



PASSION BUILT IT.  
PASSION WILL FILL IT UP.

*Quest 3.5 SE shown in Silver Mist with optional equipment.*



## IMPRESS YOUR PLAYDATE.

Could be as easy as offering to drive, as long as you're in the 240-hp Nissan Quest. If the quick sprint off the line doesn't get his attention, the confident handling will.

There's nothing like an award-winning V6 to get things off to a good start. Quest delivers 240<sup>1</sup> eager-to-please horses based on the power plant *Ward's Auto World* has named to its Ten Best list nine years in a row, calling it the "best V6 engine the auto industry's ever seen."<sup>2</sup> More important is the experience it delivers: torque-rich kick to get you up the on-ramp and into the flow quickly, with plenty of resources still to tap when you need to power by the less-endowed – minivans et al. You can credit a 24-valve 3.5-liter V6 that has all the hallmarks of Nissan's exclusive VQ technology. Such as advanced valve timing for strategic, on-demand power delivery, and friction-reduction techniques that result in smoother power, greater durability and improved fuel economy.<sup>3</sup> Team this up with the 3.5 SE's 5-speed automatic that takes full advantage of Quest's power, and you can save your energy for what's really important.

Quest's 4-wheel independent suspension is equally advanced. Borrowing a performance-oriented rear multi-link design from Maxima, Nissan's four-door sports car, it accounts for Quest's car-like ride and quick response to steering input. The multi-link layout also allows for separated rear shocks and springs, which helps Quest hug the road, even while taking bumps in stride. And the whole package is riding on a body with a very long wheelbase, resulting in an incredibly solid, stable feel, and sporty stance as well.

So grab your playdate, and take off. Even if it's only to park.

<sup>1</sup>Use regular unleaded fuel with 87 octane. For maximum power, use premium.

<sup>2</sup>*Ward's Auto World* and *Ward's Engine and Vehicle Technology Update*, January 2003.

<sup>3</sup>19/26 (city/highway) on 3.5 S and 3.5 SL; 18/25 (city/highway) on 3.5 SE. EPA fuel economy estimates. Actual mileage may vary with driving conditions – use for comparison only.

<sup>4</sup>VDC is designed to help improve driving stability, but does not prevent accidents due to abrupt steering or by carelessness or dangerous driving techniques. Always drive safely.



## SHINE IN ANY SITUATION.

To help you perform your best under the most inhospitable conditions, here's this year's list of recommendations:

**Traction Control System (TCS):** If you haven't heard about it, you soon will. An advanced technology, TCS helps limit wheel spin during acceleration, helping give you a better grip on the road.

**Vehicle Dynamic Control (VDC):**<sup>4</sup> Another technology you won't find everywhere (SE offers both TCS and VDC), VDC can detect if you have "oversteered" or "understeered." It responds immediately by redirecting engine power and brake pressure to specific wheels, which helps you keep things under control and on course.



**Anti-lock Braking System (ABS):** A plus for any outing. ABS pumps the brakes faster than humanly possible, helping prevent one or more wheels from locking up. So when you're panic-braking, ABS helps you maintain steering control – just when you need it most.

**Electronic Brake force Distribution (EBD):** Whether you have a full house or simply a full tank of gas, EBD senses the additional weight in the rear and sends extra force to the rear brakes.

**Brake Assist (BA):** When the taillights ahead of you suddenly turn red, Brake Assist is your ally. It can actually sense emergency braking and – if you're not braking hard enough on your own – it will help apply maximum force for potentially shorter stops.

cafe

3



Shift Quest into reverse and an outside mirror actually tilts downward for better visibility. Once you've parked and opened the doors, puddle lights on the bottom of the mirrors illuminate your path. (Available on 3.5 SE models.)

This system is just one of the ways we're working to help keep children safe. The Quest LATCH System (Lower Anchors and Tethers for CHildren) lets you secure LATCH-compatible child restraints in the second or third row without having to use seat belts or a locking clip.

Keep an eye on your pressure with a Tire Pressure Monitor System (TPMS)\* located inside on the Information Center. TPMS helps you maximize tire longevity, plus helps you increase performance.

\*Tire Pressure Monitor System is not a substitute for regular tire pressure checks.  
\*\*The optional rear sonar system is a convenience, but is not a substitute for proper backing procedures. Always turn and check that it is safe to do so before backing up.



With available power-adjustable foot pedals, even short and tall drivers can more comfortably reach the pedals.

No one likes to get pinched. That's why Quest offers a unique anti-pinch technology. We don't want anybody to get in the way of a closing power sliding door or power rear hatch.



A child restraint that is properly installed is one of the best ways to help keep a child safe in a moving vehicle. A fact that motivated us to create an industry first: The Snug Kids™ Child Safety Seat Fit Guide. This guide lists the child seats which best fit the rear seats of Nissan vehicles, as well as invaluable tips on correct installation. Look for it at [NissanUSA.com/snug-kids](http://NissanUSA.com/snug-kids)

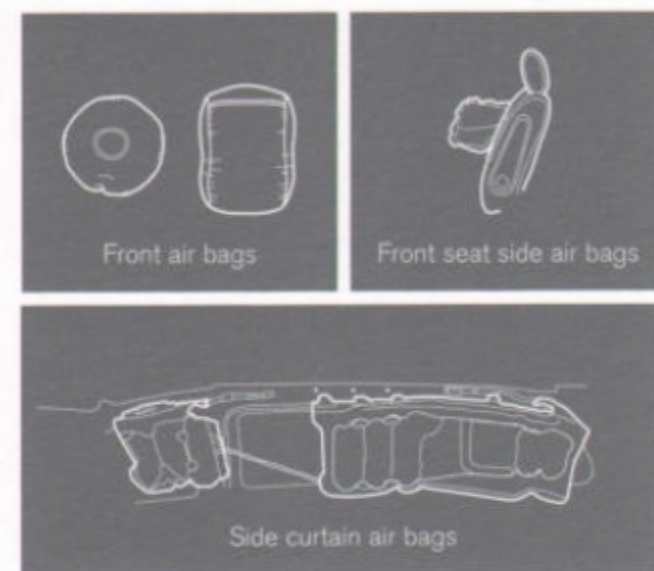


Back up with the confidence of Quest's available rear sonar system.\*\* A beeping sound is emitted when obstacles are sensed up to six feet away – and increases in frequency the closer you get.



## EMERGE WITH CONFIDENCE.

And to help make the experience a safe one, Quest has incorporated an air-bag system that is nothing short of remarkable. Let us explain. Up front, there's an advanced air-bag system with dual-stage supplemental front air bags with seat belt sensors and occupant classification sensors.\* This adjusts the air-bag deployment according to seat-belt usage and crash severity. In the case of a young child weighing 47 lbs. or less, a sensor actually deactivates the front passenger air bag. Then, there are standard roof-mounted curtain side-impact supplemental air bags with front, second- and third-row outboard occupant head protection.\* And finally, available driver and front-passenger side-impact supplemental air bags built into the front seats, so they move with the seats.\* All so you can emerge feeling confident and secure.



**Zone body construction with crumple zones:** A high-strength cabin structure built with crossmembers and reinforcements. Plus, front and rear crumple zones to help absorb impact energy before it reaches the passenger compartment.

**Hood buckling creases:** Allow the hood to buckle at predetermined points, to help prevent it from intruding into the passenger compartment in certain frontal impacts.

**High-strength steel side-door guard beams:** Welded into every door, these high-strength steel beams help protect you and your passengers in the event of side impacts.

**Energy-absorbing steering column:** It compresses during certain frontal impacts to help reduce the likelihood of injury.



\* Please keep in mind that air bags are a supplemental restraint system and must always be used in conjunction with a seat belt. Also, a rear-facing child restraint must never be placed in the front-passenger's seat. In fact, all children 12 and under should ride in the rear seat properly secured in child restraints, booster seats, or seat belts according to their size. Driver and front-passenger side-impact supplemental air bags and roof-mounted curtain side-impact supplemental air bags for front- and rear-seat occupant head protection are designed to inflate in higher severity side collisions on the side of the vehicle impacted. Please see your owner's manual for more details. Inflated air bags shown for illustration purposes only. Actual air bags deflate after deployment.

# BEYOND TRENDS



Alfonso Albaisa, Design Director, Nissan Design America, Inc., chats about the new Quest.

At the design studio, we were talking about all the things a minivan can't be – sexy, personal, fun to drive. Then a shift happened and the discussion became more like *why* can't a minivan be all these things? By then, we had already decided that our audience was the modern Mom and that the house she was living in was potentially very modern. I love architecture. And for me, Quest became this moving piece of architecture. Actually, our inspiration was more urban loft than anything automotive. You can see this in the arching line and high beltline – that's the high character line below the windows. Then, once we added the wheels, Quest took on this really aggressive stance. Deliberate. Not at all anonymous.

**"Imagine a life less ordinary."**

But even though we were modernizing the concept, we still wanted to do a pure minivan, not a crossover. And celebrate what a minivan stands for. "Imagine a life less ordinary" was one of the ideas that kept coming back to us. Like a mantra. Imagine a family that isn't compromised. Imagine a Mom or Dad driving something that truly represents their ambitions. Imagine them embracing who they really are.



# STYLEGUIDE

The latest colors. The newest fabrics. And the hippest leathers. All in one convenient place. So take your time. And look around. You never know what might catch your eye.

## THREE MODELS TO CHOOSE FROM.

### 3.5 S

Fashion Forward. 3.5-liter V6 engine, Anti-lock Braking System (ABS), Traction Control System (TCS), Tire Pressure Monitor System (TPMS), Information Center, AM/FM/CD audio system with eight speakers, Nissan Advanced Air Bag System, roof-mounted curtain side-impact supplemental air bags.\*

### 3.5 SL

Adds Easy Touch convenience to the 3.5 S. 16" aluminum-alloy wheels, roof rack, power passenger-side sliding door, power liftgate, power 8-way driver's seat, power adjustable pedals, steering wheel-mounted controls, rear audio controls, auto-dimming rearview mirror, HomeLink® Universal Transceiver.

### 3.5 SE

Adds Sporty Chic attitude to the 3.5 SL. 5-speed automatic transmission, Vehicle Dynamic Control (VDC)\*\*,\* 17" aluminum-alloy wheels, fog lights, power glass sunroof and SkyView™ roof, power driver-side sliding door, rear sonar system, Dual Zone Automatic Temperature Control (ATC), Bose® audio system, leather-appointed heated front seats.

\* Please keep in mind that air bags are a supplemental restraint system and must always be used in conjunction with a seat belt. Also, a rear-facing child restraint must never be placed in the front-passenger's seat. In fact, all children 12 and under should ride in the rear seat properly secured in child restraints, booster seats, or seat belts according to their size. Driver and front-passenger side-impact supplemental air bags and roof-mounted curtain side-impact supplemental air bags for front- and rear-seat occupant head protection are designed to inflate in higher severity side collisions on the side of the vehicle impacted. Please see your owner's manual for more details.

\*\* VDC is designed to help improve driving stability, but does not prevent accidents due to abrupt steering or by carelessness or dangerous driving techniques. Always drive safely.

©HomeLink is a registered trademark of Johnson Controls, Inc.



**SAHARA GOLD C10**

	3.5 S	3.5 SL	3.5 SE
Beige Cloth	■	■	■
Beige Leather		□	■

**AZURE BLUE B10**

	3.5 S	3.5 SL	3.5 SE
Gray Cloth	■	■	■

**SMOKE K11**

	3.5 S	3.5 SL	3.5 SE
Gray Cloth	■	■	■
Beige Leather		□	■
Rouge Leather			■

**SILVER MIST K12**

	3.5 S	3.5 SL	3.5 SE
Gray Cloth	■	■	■
Beige Leather		□	■
Rouge Leather			■

**CORAL SAND C12**

	3.5 S	3.5 SL	3.5 SE
Beige Cloth	■	■	■

**GREEN TEA D11**

	3.5 S	3.5 SL	3.5 SE
Beige Cloth	■	■	■
Beige Leather		□	■

**NORDIC WHITE PEARL Q11**

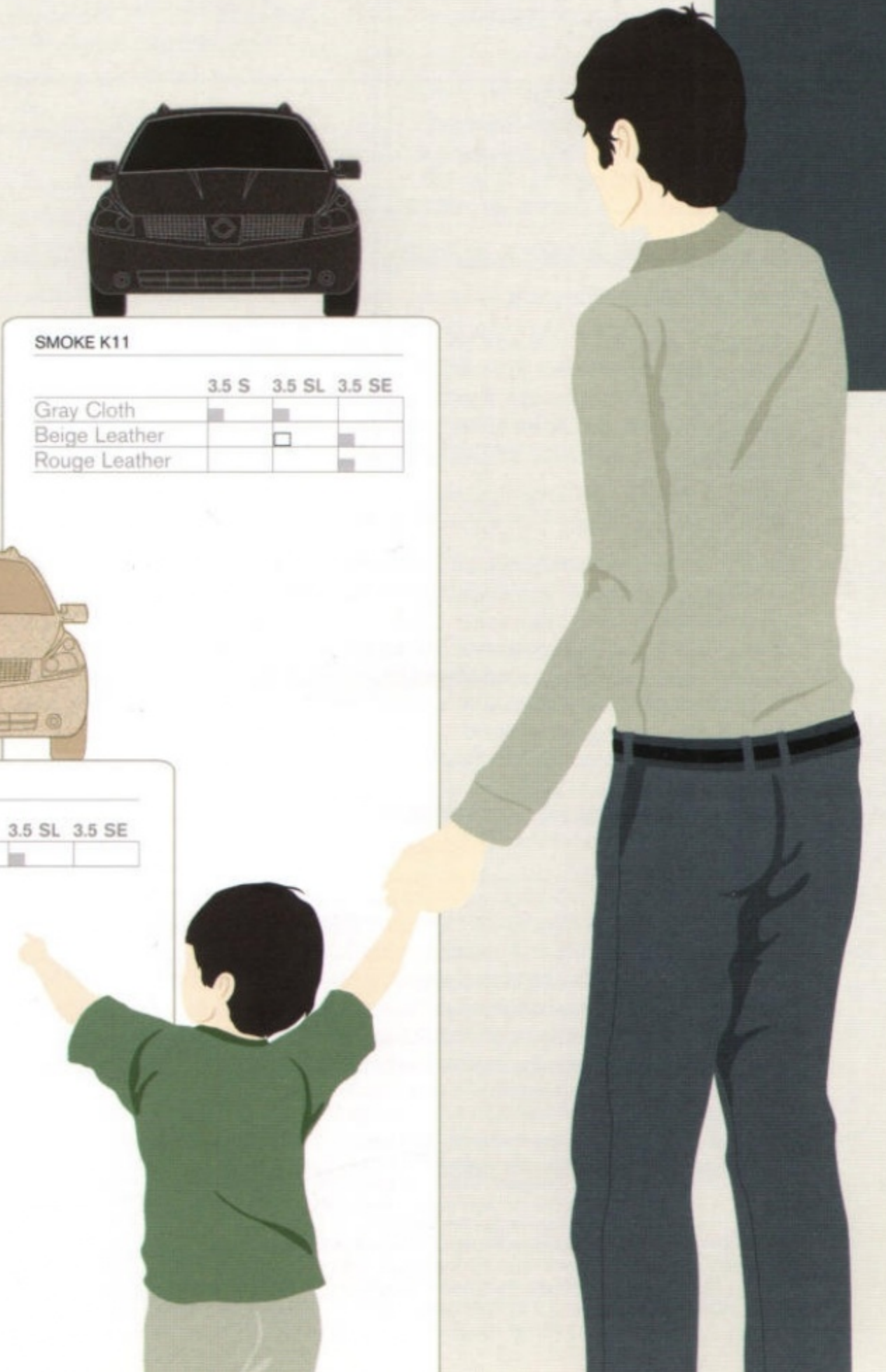
	3.5 S	3.5 SL	3.5 SE
Beige Cloth	■	■	■
Beige Leather		□	■

**AUTUMN RED A14**

	3.5 S	3.5 SL	3.5 SE
Beige Cloth	■	■	■
Beige Leather		□	■

■ Standard  
□ Part of 3.5 SL Leather Package

Nissan has taken care to ensure that the color swatches presented here are the closest possible representations of actual vehicle colors. Swatches may vary slightly due to the printing process and whether viewed in daylight, fluorescent or incandescent light. Please see the actual colors at your local Nissan dealer.



3.5 S 3.5 SL 3.5 SE

## STYLING

Automatic on/off headlights, fog lights and puddle lights			■
Cornering lights	■	■	■
Tilt down in reverse driver- and passenger-side mirrors			■
Dual sliding rear doors	■	■	■
Power sliding rear passenger-side door		■	■
Power sliding rear driver-side door		■	■
Power liftgate	■	■	

## ENTERTAINMENT

Nissan DVD Entertainment System	■	■	■
Dual Monitor Nissan DVD Entertainment System			■
AM/FM/CD audio system (150 watts)	■	■	
Digital Bose® audio system with AM/FM (265 watts)			■
In-dash 6-CD changer		■	■
Dual Media Playback with wireless headphone capability and two headphone jacks	■	■	■

## SEATING/APPOINTMENTS

8-way manual driver's seat with manual lumbar and seatback umbrella holder	■		
8-way power driver's seat with manual lumbar and seatback umbrella holder		■	■
4-way power front-passenger's seat		■	■
Driver's seat entry/exit system with memory driver's seat, mirrors and pedals (two presets, remote-activated)			■
Heated front seats		■	■

## INTERIOR

Nissan Navigation System <sup>2</sup> with GPS DVD-ROM atlas and 7.0" color LCD screen		■	■
Information Center with 6.3" LCD monitor and multiple views	■	■	■
Air conditioning	■	■	■
Dual Zone Automatic Temperature Control (ATC) with in-cabin microfilter			■
Second- and third-row air conditioning/heater vents with second-row controls	■	■	■
Power door locks and power front windows with front one-touch auto-up/down	■	■	■
Flip-out rear quarter windows	■		
Power flip-out rear quarter windows		■	■
Cruise control	■	■	■
Remote keyless entry with remote front windows down	■	■	■
Key-operated front windows up/down	■	■	■

## SAFETY/SECURITY

Nissan Advanced Air Bag System with dual-stage supplemental front air bags with seat belt sensors and occupant classification sensor <sup>4</sup>	■	■	■
Roof-mounted curtain side-impact supplemental air bags for front, second- and third-row outboard occupant head protection <sup>4</sup>	■	■	■
Driver and front-passenger side-impact supplemental air bags <sup>4</sup>		■	■
3-point ALR/ELR passenger seat belt system (ELR for driver)	■	■	■
Front seat belts with pretensioners and load limiters	■	■	■

■ Standard	■ Part of 3.5 S Upgrade Package
□ Optional	■ Part of 3.5 SL Upgrade Package
	■ Part of Nissan DVD Entertainment System Package
	■ Part of 3.5 SE Dual Monitor Nissan DVD Entertainment System Package
	■ Part of Nissan Navigation System and In-dash 6-CD Changer option
	■ Part of Fold_Away Seat Package
	■ Part of 3.5 SL Leather Package
	■ Part of Nissan Navigation System option

<sup>1</sup>No satellite radio reception is available and "NO SAT" will be displayed when the SAT button is pressed unless optional satellite receiver and antenna were purchased and installed (late availability only), and an XM® or SIRIUS™ satellite radio service subscription is active. Satellite radio option can only be installed in vehicles that were factory pre-wired for satellite radio. <sup>2</sup>Factory-installed option. Never program while driving. Requires accurate GPS service to be available and operating for features to function properly. Mapping may not be detailed in all areas or reflect current road regulations. Some Nissan dealers may not appear on the current mapping areas. Periodic updates to the DVD-ROM will be available for an additional cost. See your Nissan dealer for details. <sup>3</sup>Nissan Navigation System options require Nissan DVD Entertainment System Package or 3.5 SE Dual Monitor Nissan DVD Entertainment System Package. <sup>4</sup>Please keep in mind that air bags are a supplemental restraint system and must always be used in conjunction with a seat belt. Also, a rear-facing child restraint must never be placed in the front-passenger's seat. In fact, all children 12 and under should ride in the rear seat properly secured in child restraints, booster seats, or seat belts according to their size. Driver and front-passenger side-impact supplemental air bags and roof-mounted curtain side-impact supplemental air bags for front- and rear-seat occupant head protection are designed to inflate in higher severity side collisions on the side of the vehicle impacted. Please see your owner's manual for more details. <sup>5</sup>Use regular unleaded fuel with 87 octane. For maximum power, use premium fuel. <sup>6</sup>VDC is designed to help improve driving stability, but does not prevent accidents due to abrupt steering or by carelessness or dangerous driving techniques. <sup>7</sup>Without roof rack; 71.9 inches with roof rack. <sup>8</sup>When purchased at the time of new vehicle purchase. See dealer for details. <sup>9</sup>HomeLink is a registered trademark of Johnson Controls, Inc. <sup>10</sup>Richbass is a registered trademark of Bose Corporation. <sup>11</sup>Igloo and PlentiKool are registered trademarks of Igloo Products Corporation. The XM name and related logos are registered trademarks of XM Satellite Radio Inc. Sirius and related marks are trademarks of Sirius Satellite Radio Inc. All rights reserved.

Rear sonar system	■	■	■
Roof rack side rails		■	■
Roof rack crossbars			■
SkyView roof and power sliding glass sunroof with one-touch open/close and tilt feature			■
Dual power outside mirrors		■	■
Dual power heated outside mirrors		■	■
Front UV-reducing solar glass and rear privacy glass	■	■	■

Radio Data System (RDS)		■	■
Steering wheel-mounted audio controls	■	■	■
Eight speakers	■		
Eight premium speakers		■	
Ten Bose® speakers, including center speaker and Richbass® woofer			■
Satellite radio <sup>1</sup>	□	□	□

Second-row captain's chairs with forward adjustments and tip-up easy entry for third row	■	■	■
Third-row bench seat	■	■	■
Fold_Away second-row and third-row seats	■	■	■
Cloth seat trim	■	■	
Leather-appointed seats		■	■
Leather-wrapped steering wheel		■	■

HomeLink® Universal Transceiver and auto-dimming rearview mirror		■	■
Power adjustable pedals		■	■
Front height-adjustable seat belts and tilt steering column	■	■	■
Second-row height-adjustable seat belts	■	■	■
Variable intermittent speed-sensitive windshield wipers and rear wiper	■	■	■
Lamps on demand	■	■	■
Dual front map lights, dual second- and dual third-row reading lights	■	■	■
Dual illuminated visor vanity mirrors with extenders	■	■	■
Four 12-volt DC power outlets, retained accessory power and battery saver	■	■	■
Grocery bag hooks	■	■	■
Full-length overhead center console	■		

Height-adjustable head restraints for all positions	■	■	■
LATCH System (Lower Anchors and Tethers for Children)	■	■	■
Child-safety sliding rear door locks	■	■	■
Zone body construction with front and rear crumple zones	■	■	■
Energy-absorbing steering column and high-strength steel side-door guard beams	■	■	■
Hood buckling creases	■	■	■
Nissan Vehicle Immobilizer System	■	■	■

3.5 S 3.5 SL 3.5 SE

## ENGINE

VQ35DE – 3.5-liter DOHC 24-valve V6 engine with CVTCS  
Horsepower – 240 hp<sup>5</sup> @ 5,800 rpm  
Torque – 242 lb-ft @ 4,400 rpm

## DRIVETRAIN

Front engine/front-wheel drive  
4-speed automatic transmission (3.5 S; 3.5 SL)  
5-speed automatic transmission (3.5 SE)  
Traction Control System (TCS)  
Vehicle Dynamic Control (VDC)<sup>6</sup> – 3.5 SE

## SUSPENSION AND STEERING

Front: Independent strut suspension with stabilizer bar  
Rear: Multi-link independent suspension with stabilizer bar  
Engine speed-sensitive power-assisted steering

## BRAKES

4-wheel vented disc brakes with Anti-lock Braking System (ABS)  
Electronic Brake force Distribution (EBD) and Brake Assist (BA)

## WHEELS AND TIRES

16" x 6.5" Steel wheels with bolt-on wheel covers (3.5 S)  
16" x 6.5" 6-spoke aluminum-alloy wheels (Part of ■ on 3.5 S, standard on 3.5 SL)  
17" x 6.5" 6-spoke aluminum-alloy wheels (3.5 SE)  
P225/65HR16 All-season tires (3.5 S, 3.5 SL)  
P225/60HR17 All-season tires (3.5 SE)  
Tire Pressure Monitor System (TPMS)

## CAPACITIES

Interior passenger volume (cu. ft.) 211.9 (3.5 S, 3.5 SL) 211.4 (3.5 SE)  
Cargo capacity (cu. ft.)  
All seats in use positions 32.7  
Second row upright, third row folded flat 88.2 (3.5 S, 3.5 SL) 85.4 (3.5 SE)  
Second row folded, third row folded flat 148.7 (3.5 S, 3.5 SL) 143.8 (3.5 SE)  
Fuel tank (gals.) 20.1  
Maximum towing capacity (lbs.) 3,500 Maximum tongue weight (lbs.) 350

## DIMENSIONS (INCHES)

EXTERIOR  
Wheelbase 124.0 Tread width (front/rear) 67.3/67.3  
Overall length 204.1 Overall width 77.6  
Overall height 70.0<sup>7</sup>

## INTERIOR – FRONT/SECOND ROW/THIRD ROW

Head room 41.9/41.6/37.7 Shoulder room 63.7/66.2/61.5  
Leg room 41.6/41.2/41.1 Hip room 65.5/67.4/49.9

## CURB WEIGHTS (LBS.)

Automatic transmission 4,012 (3.5 S) 4,061 (3.5 SL) 4,175 (3.5 SE)

## 2004 EPA FUEL ECONOMY ESTIMATES (CITY/HWY)

Automatic transmission 19/26 (3.5 S, 3.5 SL) 18/25 (3.5 SE)

(Actual mileage may vary with driving conditions – use for comparison only).

## PACKAGES

## ■ NISSAN DVD ENTERTAINMENT SYSTEM PACKAGE

Dual Media Playback with wireless headphone capability and two headphone jacks (3.5 S only)  
Second-row 7" monitor  
DVD player with remote control  
Two wireless headphones  
Auxiliary inputs  
(This package requires Fold\_Away Seat Package)

## ■ 3.5 S UPGRADE PACKAGE

16" x 6.5" aluminum-alloy wheels  
Rear sonar system  
(This package requires Fold\_Away Seat Package)

## ■ 3.5 SE DUAL MONITOR NISSAN DVD ENTERTAINMENT SYSTEM PACKAGE

Second-row 7" monitor  
Third-row 7" monitor  
DVD player with remote control  
Two wireless headphones  
Auxiliary inputs  
(This package requires Fold\_Away Seat Package)

## ■ 3.5 SL LEATHER PACKAGE

Leather-appointed seats  
4-way power passenger's seat  
(This package requires Fold\_Away Seat Package and 3.5 SL Upgrade Package.)

## ■ FOLD\_AWAY SEAT PACKAGE

Second-row folding captain's chairs  
Second-row height adjustable seat belts  
Second-row cup holders  
Second-row tip-up easy-entry feature  
Third-row folding bench seat  
Third-row seat back grocery bag hooks  
Third-row head restraint storage bag LATCH System

## ■ 3.5 SL UPGRADE PACKAGE

Heated front seats with side-impact supplemental air bags<sup>4</sup>  
Rear sonar system  
(This package requires Fold\_Away Seat Package)

## ACCESSORIES

CHOOSE GENUINE NISSAN ACCESSORIES They're the only way to go for a seamless fit and finish. Plus, they're backed by a 3-year/36,000-mile warranty.\* Visit NissanUSA.com for the latest on Quest accessories.

- Air Bag Anti-theft Bolt
- All-season Floor Mats
- Ashtray
- Cargo Area Protector
- Cargo Net
- Carpeted Floor Mats
- First-aid Kit
- Hand-held Searchlight
- Hood Bug Deflector
- Igloo® PlentiKool® Cooler
- In-cabin Microfilter
- License Plate Frames
- Nose Mask
- Rear Cargo Cover
- Roadside Emergency Kit
- Running Boards with Lights
- Seat Belt Extender
- Splash Guards
- Sunroof Wind Deflector
- Water-resistant Seat Covers
- Wheel Locks

WARRANTIES Every Nissan is backed by a 36-month/36,000-mile basic bumper-to-bumper coverage and a 5-year/60,000-mile limited powertrain coverage. (For complete information, see your Nissan dealer and read the actual limited warranty.) For extra protection, you can also add Security+Plus®, the only extended service agreement approved by Nissan.

SIGNATURE FINANCING When you're ready to buy or lease a Nissan, the Nissan Motor Acceptance Corporation (NMAC) offers attractive rates, fast response and flexible terms.

GENUINE NISSAN PARTS AND SERVICE Every part we make is manufactured to the same exacting standards as the original. And they're the only parts to carry Nissan's factory-backed limited warranty. Our factory-trained, certified service technicians are just as precision oriented. And with Maintenance+Plus® coverage, your vehicle will receive up to 17 different services and over 33 different inspection items at each visit, using the most up-to-date diagnostic equipment available. (For complete information, read actual plan.)

WEB SITE/CUSTOMER SERVICE Keep in touch and stay up to date. Log on to NissanUSA.com or call 1-800-Nissan-1 for the scoop on our current cars and trucks, as well as a sneak peek into the future. Or perhaps you just have a question. And don't forget to check out the latest ways to help keep your vehicle in peak performance. It's part of our commitment to getting it right – whatever your needs, wherever you are.

All illustrations, photographs and specifications in this publication are based on the latest product information available at the time of printing. Some vehicles shown with optional equipment. See the actual vehicle for complete accuracy. Availability and delivery times for particular models or equipment may vary. Nissan North America, Inc. reserves the right to make changes at any time, without prior notice, in prices, colors, materials, equipment, specifications and models, and to discontinue models or equipment. Specifications, options and accessories may differ in Hawaii, U.S. territories and other countries. For additional information on availability, options or accessories, contact your Nissan dealer.

At [NissanUSA.com](http://NissanUSA.com), you'll find virtual product demonstrations, a way to "build your own Nissan," a dealer locator, and more information about key Nissan support services. Or if you'd prefer, call **1-800-239-8810** for more information. Finally, **1-800-NISSAN-1** is available to answer specific questions about Quest or any other any Nissan vehicle. Nissan, the Nissan Brand Symbol, "SHIFT\_" tagline, and Nissan model names are Nissan trademarks. Always wear your seat belt, and please don't drink and drive. © 2003 Nissan North America, Inc. '04 Quest. 4010A-07/03-500M-GRS. Printed in U.S.A.



SHIFT\_