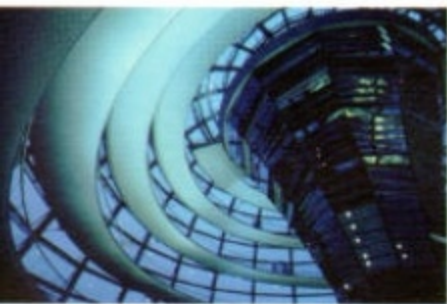




IS



PULSATING. DYNAMIC. A 24/7 EXPERIENCE.

Vehicle shown in Tungsten Pearl with available equipment.



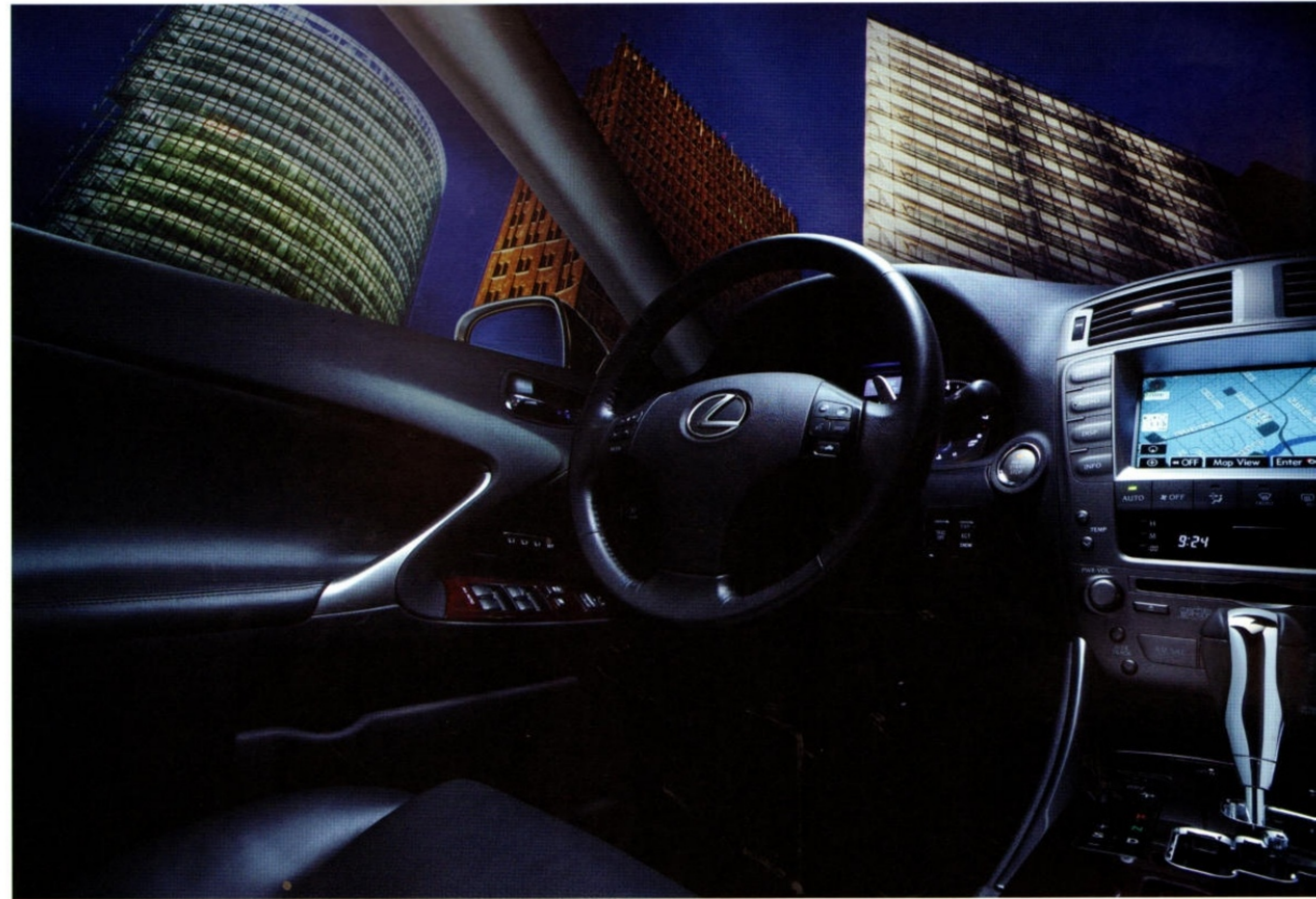
BERLIN. AND THE NEW LEXUS IS.

Rising from the banks of the River Spree, there is a city that barely knows how to rest. With a relentless pulse, Berlin eagerly embraces progress, the eclectic and all things energized. And one car, like no other, was built to navigate such a place. The new Lexus IS. With an available 306-horsepower V6[†], six-speed paddle-shift sequential automatic and all-wheel drive (AWD)^{*}. Strap yourself in. This journey is to Berlin and beyond.



IN THE IS, POWER, AGILITY AND SPEED all converge to create a dynamic performance experience. An available 306-horsepower V6¹ races you from the streets of Potsdamer Platz all the way to the Autobahn—where speed limits are often mercifully nonexistent. Meanwhile, to harness such exceptional horsepower, the IS utilizes technologically advanced systems that help it achieve

optimal performance. An Electronic Throttle Control System with intelligence (ETCS-i) provides more precise command of engine power. Available sport-tuned suspension helps maintain wheel alignment and supplies more confident handling and tire grip. Rear-wheel drive and available all-wheel drive (AWD)² help enhance control. And shouldering all this athleticism are available 18-inch wheels and road-hugging, high-performance tires.² The result? An authoritative command of the road.



The look of the new IS is fresh, original and visually arresting. Stretching 3.5 inches longer and three inches wider than its predecessor, this is a vehicle with a defiantly athletic stance. Contributing to its aggressive look are twin-barrel headlamp clusters, a dual-exhaust system and aerodynamic taillamps. Z-shaped interior door panels and a vertically latticed grille are bold and sporty, and complemented by metallic-finish interior accents and available genuine wood trim. And, of course, the 194-watt³ Lexus Premium Sound System with an in-dash, six-disc CD auto-changer and power moonroof only add to its appeal. With several new colors to choose from, the IS is the perfect statement when traveling through Berlin—one of the world's most stylish cities.



Twilight. Bank of the River Spree.



Up-to-the-minute technology is essential in every Lexus. The IS is no exception and offers plenty of intuitive innovations. SmartAccess with push-button start detects your key's presence up to one meter from the vehicle and enables you to operate the door locks, trunk and ignition—all without ever taking the key from your pocket. The IS' innovative power moonroof offers dial adjustment. This unique feature has nine different positions of closure as well as a push-button option to fully open or close the moonroof with just one touch. And when negotiating tight parking spots, available Intuitive Parking Assist uses ultrasonic sensors to monitor your efforts and disclose proximity to an object either audibly or through the available NAV touchscreen and instrument gauge display. Intuitive technology such as this can make driving the IS seem nearly effortless. Which will be appreciated, as you'll no doubt be saving your energy to tackle Berlin's storied nightlife.

Vehicle shown with available equipment.

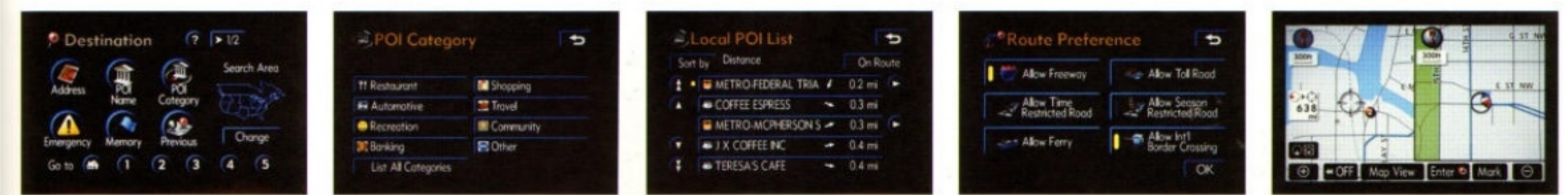


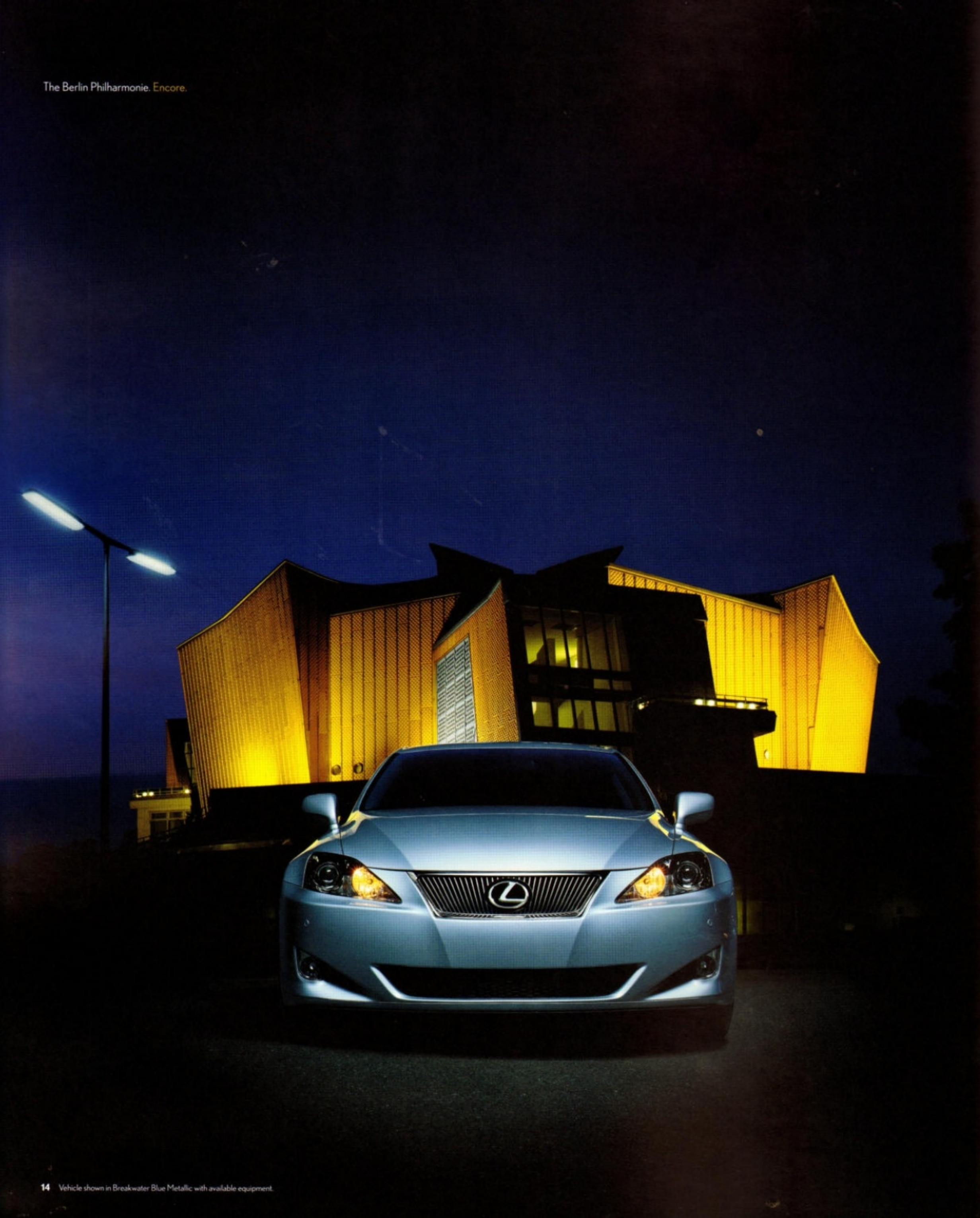
The Lexus IS, just like Berlin's forward-looking architecture, showcases some highly progressive detailing. Framed by metallic-finish interior accents and available genuine wood trim, electroluminescent gauges radiate for easier reading. Their luminescent needles light from base to tip and sweep across the dial as the ignition starts. Utilizing red and amber lighting, ambient speedometer and tachometer indicators can be set to glow upon reaching certain set speeds or rpm levels. And available six-speed paddle-shift controls* are conveniently mounted behind the steering wheel for what very well may be the ride of a lifetime.





THE LEXUS NAV—ESSENTIAL TO BOTH DAY-TRIPPERS AND NIGHT-CRAWLERS ALIKE. Berlin is world famous for its restaurants, lounges and clubs—and you'll want to sample them all. And that on-the-go mind-set is precisely why Lexus included the available 5th generation voice-activated DVD navigation system⁴ with backup camera⁵. When it comes to getting around, the Lexus NAV is an essential resource. In fact, in an IS outfitted for North America, it can guide drivers with precise accuracy throughout most of the contiguous U.S. and major Canadian cities. Prompted by a voice command, the input of an address, or in some cases even a telephone number, the Lexus NAV offers you three different route options. Its huge database can detail restaurants by cuisine type, give information about upcoming freeway exits and even help find ATM locations. The IS also offers available Bluetooth[®] technology⁶ that can link the NAV system with compatible cell phones for voice-activated, hands-free calling and automatic direction information. In the IS, nearly all things are within reach. Including the time of your life.





PLUGGED IN. Germany has been home to many of the world's great composers—from classical to techno. And whether you're in the mood for Beethoven or Ulrich Schnauss, inside the new IS you can use your iPod® or most other MP3 players to access your entire music library. Simply plug your player into the auxiliary iPod®/MP3/Windows Media® Audio (WMA) port, and enjoy the vehicle's amazing sound. The IS cabin features sound-absorbing dimpling on the sun visors, as well as acoustic windshield glass containing a noise-dampening inner film to help promote a more pure listening environment. The new IS also conveniently offers integrated compatibility with both XM® and SIRIUS satellite radio. And with the available 300-watt® Mark Levinson® Premium Audio Surround Sound System, you'll have 14 carefully positioned speakers offering 7.1 channel surround sound speaker architecture. The result? An experience that is as powerful and nuanced as that of the acoustically revered Berlin Philharmonic.

mark
levinson
ORIGINAL AUDIO LABORATORIES



SIRIUS
SATELLITE RADIO



The A-7 to Nürburgring. Taming the Autobahn.



THE NEW IS FEATURES SEVERAL INNOVATIONS that help forge a compromise between brute performance and sophisticated engineering. Its advanced double-overhead-cam engine benefits from a new, more efficient direct fuel injection. This system was specifically designed for the Lexus IS and ensures both increased power and less fuel consumption. Also featured is dual Variable Valve Timing with intelligence (VVT-i) that functions on both the intake and the exhaust valves. Dual VVT-i increases power, torque and fuel economy, all while simultaneously reducing emissions. Technological advances have long been a major part of Lexus engineering. So, why not realize all this potential? On to Nürburgring, one of the most demanding racetracks in Europe.



VVT-i



The IS 350's unique fuel injection system utilizes both a port and direct fuel injector. This allows more precise delivery of fuel to the engine—increasing the vehicle's efficiency and power.



PORT FUEL INJECTOR



DIRECT FUEL INJECTOR

Nürburgring, Fox Hole, 110 MPH



LIFE IN EXTREME ACCELERATION.



The IS proudly boasts a scorching top track speed of 142 miles per hour,³ the ability to bolt from 0 to 60 in 5.6 seconds,^{4,10} available high-performance 18-inch wheels,² and a speed-inspired dual-exhaust system—a bold declaration of racing prowess that aids performance by reducing back pressure and allowing the engine to “breathe.” And it’s all enhanced by sculpted, bolstered seats that during dynamic cornering and acceleration help hold the driver and passengers firmly, yet comfortably, in place. Trust us, with its available 306 horsepower¹ and 277 lb-ft of torque,¹ you’ll appreciate a snug fit.



Nürburgring is one of the world's legendary circuits for racing enthusiasts. The Ring's daunting 13-mile course is part racetrack and part mountain, and boasts no less than 73 twisting bends. Since 1927, it's been one of the most demanding race and test tracks in Europe. In fact, the Lexus IS carved Nürburgring's course during its own testing trials—with phenomenal success.





Flying like the wind. Bavarian countryside.



ULEV II

A performance-based Lexus must look the part—elegantly refined yet endlessly energetic. Meet the IS: robustly athletic with a sleek profile and bold, muscular proportions. Aerodynamics are strongly emphasized with careful attention to underbody airflow. In fact, it features innovative, smooth paneling with stepping on the undercarriage to help minimize and balance front and rear lift. And to reduce drag, aerodynamically designed side mirrors slice

cleanly through the air, while new sweeping taillamps direct airflow away from the vehicle rather than around it. This lower drag makes better use of engine power while the lower lift aids high-speed control and handling. Lastly, the new IS has been rated an Ultra-Low Emission Vehicle (ULEV II). Meaning, it deserves a place not only on the tracks of Nürburgring, but also among Germany's environmentally friendly wind farms.

55 miles from Munich. 75 miles per hour.



5 p.m. Massage. 6 p.m. Sauna. 7 p.m. Another massage?



EUROPEANS ARE FAMOUSLY FOND OF "TAKING THE CURE"—relaxing in the exquisite thermal spas of Aachen. In that spirit, Lexus has designed the IS with meticulous attention to detail and many luxurious extras. Its available features include perforated leather-trimmed seating with individually heated and ventilated front seats, rain-sensing windshield wipers and Intuitive Parking Assist. Also available is the Lexus Memory System, which conveniently remembers up to three different positions for the 10-way power-adjustable driver's and front passenger's seats, as well as outside mirrors and the available power-adjustable tilt-and-telescoping steering wheel. And as with every Lexus, the IS offers a remarkably quiet cabin—even at top speeds. So while the IS is certainly built for thrills, it's also built for comfort.



COCKPIT OR CABIN? With an available Lexus DVD-based, voice-activated navigation system⁴ and radiant dials on the instrument panel, the IS interior is highly futuristic. One might also consider it racing-inspired, with controls for the six-speed paddle-shift transmission mounted behind the steering wheel, and, on the front side, for the audio, cruise control

and available Bluetooth[®] technology⁶ systems. Of course, with amenities such as a leather-trimmed steering wheel, metallic-finish and available bird's-eye maple accents, steel- and leather-accented shift knob, and available heated and ventilated perforated seats, its interior can also feel like pure luxury. Fortunately, having it all is a perfectly acceptable compromise.



VDIM

Intuitive technology is an important part of the IS performance story, and, as such, the IS features many integrated systems that respond to and manage situations without a driver's assistance. Vehicle Dynamics Integrated Management (VDIM)[™] (on the IS 350) monitors the braking and throttle systems to automatically anticipate and help correct a loss of traction. In fact, the VDIM[™] is programmed to help

maximize the excitement of driving—without sacrificing control—by subtly, but effectively, applying braking, throttle and steering assistance when the vehicle's handling limits are reached. Available Dynamic Radar Cruise Control^{*,12} is designed to automatically reduce your vehicle's speed to its pre-set following distance, should you approach a vehicle traveling directly in front of you too closely. And even the electronic power steering is speed sensitive. Clearly, the IS is every bit as sharp as it looks.

THE ONLY OBVIOUS ALTERNATIVE:

THE IS 250 WITH ALL-WHEEL DRIVE.

While driving through more challenging terrain, like the winding roads of Germany's Black Forest, available all-wheel drive (AWD) can assist you with better traction, cornering, handling and power—whatever weather conditions you may face. In fact, while the IS usually maintains a rear-wheel drive bias, up to 50 percent of the vehicle's torque can be routed to the front wheels if needed.

Additionally, an all-new front and rear suspension system optimizes wheel alignment and helps provide precise handling and a confident tire grip. To suit the varying needs of dedicated automotive enthusiasts, the IS is available with a 204-horsepower V6¹ (IS250) that is offered in both rear-wheel drive and all-wheel drive (AWD). And while all models feature six-speed transmissions, the rear-wheel drive IS 250 also offers a sportier manual transmission.



Fearless in the Black Forest.

Vehicles shown with available equipment.

The engineers at Lexus have added many safety systems to provide a more assured driving experience. To begin with, the IS features an available Bi-xenon Adaptive Front Lighting System (AFS) that helps illuminate a broader stretch of road around a curve. For example, the right High-Intensity Discharge (HID) headlamp will rotate up to five degrees in a right turn. In a left turn, the left HID headlamp will pivot a full 15 degrees. Should AFS reveal something in your path to avoid, the IS also supplies impressive stopping power: four-wheel ventilated disc brakes (IS 350 only), high-friction front brakes¹³ and an Anti-lock Braking System (ABS). To help correct for a loss of traction in such a turn, there is Vehicle Dynamics Integrated Management (VDIM)¹¹ on the IS 350 and Vehicle Stability Control (VSC)¹¹ on the IS 250. After all, steering clear of danger is the best defense for you and your passengers' well-being.



Should an unavoidable collision occur, Lexus offers a sophisticated Pre-Collision System (PCS)¹⁴ that employs millimeter-wave radar to calculate the distance and speed at which the IS is approaching an object. If PCS determines a frontal crash is imminent and the driver has depressed the brake pedal, PCS automatically applies increased braking force while simultaneously retracting the front seatbelts to help reduce collision damage. Additionally, during a severe frontal collision, the Supplemental Restraint System (SRS) with dual-stage deployment front airbags¹⁵ will immediately activate. This SRS includes a unique, new twin-chamber front passenger's airbag,¹⁵ front seat-mounted side airbags,¹⁵ driver's and front passenger's knee airbags¹⁵ and full-length front and rear side curtain airbags.¹⁵ All of which will act collectively to help provide important protection to both the driver and passengers.



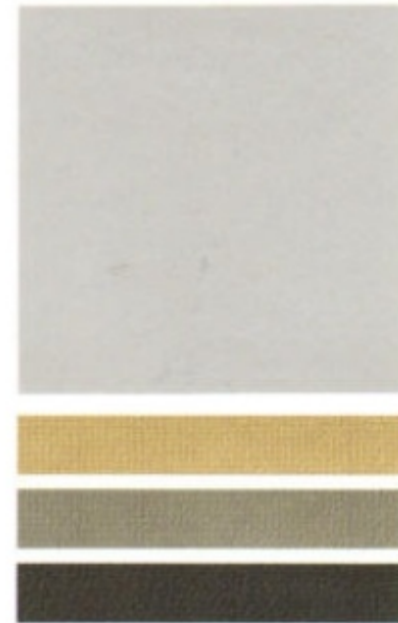
EXTERIOR COLORS

TUNGSTEN PEARL



Sterling or Black Leather

GLACIER FROST MICA



Cashmere, Sterling or Black Leather

BREAKWATER BLUE METALLIC



Cashmere, Sterling or Black Leather

BLUE ONYX PEARL



Cashmere, Sterling or Black Leather

BLACK ONYX



Cashmere, Sterling or Black Leather

MATADOR RED MICA



Cashmere, Sterling or Black Leather

MYSTIC GOLD METALLIC



Cashmere Leather

DESERT SAGE METALLIC



Cashmere or Black Leather

CRYSTAL WHITE



Cashmere, Sterling or Black Leather

SMOKY GRANITE MICA



Cashmere, Sterling or Black Leather

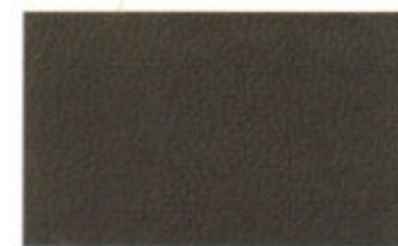
INTERIOR COLORS



CASHMERE LEATHER



STERLING LEATHER



BLACK LEATHER



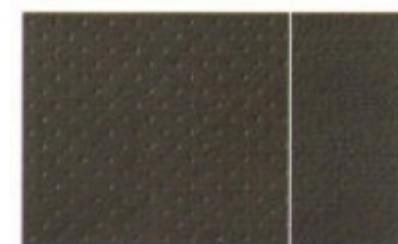
METALLIC FINISH



CASHMERE LEATHER WITH PERFORATED INSERTS



STERLING LEATHER WITH PERFORATED INSERTS



BLACK LEATHER WITH PERFORATED INSERTS



AUBURN BIRD'S-EYE MAPLE

INTERIOR TRIM

Option Packages

Premium Package (RWD only)

Luxury Package

Sport Package (RWD only)

Navigation System/Mark Levinson Package

Auburn bird's-eye maple interior trim

Perforated leather-trimmed interior (RWD only)

Power tilt-and-telescopic steering column

Lexus voice-activated DVD Navigation System⁴ with backup camera⁵ and Bluetooth[®] technology⁶

Mark Levinson 14-speaker, 300-watt⁸ Premium Surround Sound Audio System⁹ with 7.1 architecture and in-dash, single-feed, six-disc CD/DVD auto-changer

Heated and ventilated front seats (RWD only)

Lexus Memory System for power driver's seat (except lumbar), outside mirrors and steering wheel

Illuminated doorsill scuff plates

Aluminum doorsill scuff plates

Aluminum sport pedals

Power rear-window sunshade

Bi-xenon High-Intensity Discharge (HID) headlamps

Adaptive Front Lighting System (AFS)

Electrochromic (auto-dimming) outside mirrors with auto tilt-down in reverse

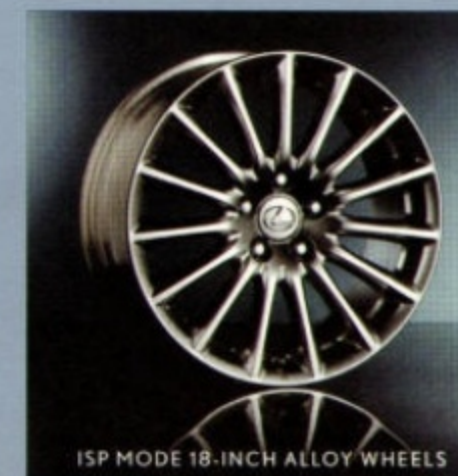
Rain-sensing intermittent windshield wipers with mist cycle

Sport-tuned suspension

18 x 8.0-in alloy wheels with 225/40YR18 tires front, 18 x 8.5-in alloy wheels with 255/40YR18 tires rear² (RWD only)



G-SPIDER 18-INCH ALLOY WHEELS



ISP MODE 18-INCH ALLOY WHEELS

Options and Accessories

Lexus voice-activated DVD Navigation System⁴ with backup camera⁵ and Bluetooth[®] technology⁶

Intuitive Parking Assist

Lexus Pre-Collision System (PCS)¹⁴ and Dynamic Radar Cruise Control¹² (automatic transmission only)

18 x 8.0-in alloy wheels with 225/40YR18 tires front, 18 x 8.5-in alloy wheels with 255/40YR18 tires rear² (RWD only)

Headlamp washers—requires Bi-xenon High-Intensity Discharge (HID) headlamps and Adaptive Front Lighting System (AFS)

Rear spoiler

Ground effects kit (available December 2005)

Dual sport exhaust by HKS[®] (available Spring 2006)

XM[®] or SIRIUS Satellite Radio capability⁷ (available Spring 2006)

All-weather floor mats

Trunk mat

Cargo net

Car cover

Moonroof wind deflector (available Spring 2006)

G-Spider 18-in alloy wheels² (RWD only)

ISP Mode 18-in alloy wheels² (RWD only)

Wheel locks

Leather care kit



Visit our Web site and try on a color. lexus.com

Leather-trimmed interior is standard. Perforated leather-trimmed interior is available. Metallic finish interior trim is standard. Auburn bird's-eye maple interior trim is available.

Vehicle shown with available equipment.

IS 350 Engine

Type	60° V6, aluminum block and heads, certified Ultra-Low Emission Vehicle (ULEV II)
Displacement	3.5 liters (210 cubic inches)
Valvetrain	Four cam, four valves per cylinder, with continuously Variable Valve Timing with intelligence (VVT-i) on intake and exhaust valves
Compression Ratio	11.8:1
Horsepower at RPM	306 hp @ 6,400 ¹
Torque at RPM	277 lb-ft @ 4,800 ¹

IS 250 Engine

Type	60° V6, aluminum block and heads, certified Ultra-Low Emission Vehicle (ULEV II)
Displacement	2.5 liters (152 cubic inches)
Valvetrain	Four cam, four valves per cylinder, with continuously Variable Valve Timing with intelligence (VVT-i) on intake and exhaust valves
Compression Ratio	12.0:1
Horsepower at RPM	204 hp @ 6,400 ¹
Torque at RPM	185 lb-ft @ 4,800 ¹



Body, Dimensions

Type	Five-passenger luxury sports sedan	Fuel-Tank Capacity	17.1 gal (64 L)
Construction	Welded-steel unibody	Trunk Capacity	13.0 cu ft (368 L)
Overall Length	180.1 in (4,574 mm)	Headroom	37.2/36.7 in (944/932 mm) (front/rear)
Width	70.9 in (1,800 mm)	Legroom	43.9/30.6 in (1,115/777 mm) (front/rear)
Height	56.1 in (1,425 mm) (RWD) 56.7 in (1,440 mm) (AWD)	Shoulder Room	54.4/52.7 in (1,381/1,338 mm) (front/rear)
Wheelbase	107.5 in (2,730 mm)		
Ground Clearance	5.7 in (145 mm)		
Curb Weight	3,527 lb (1,599 kg) (IS 350) 3,435 lb (1,558 kg) (IS 250 A/T RWD) 3,455 lb (1,567 kg) (IS 250 M/T RWD) 3,651 lb (1,656 kg) (IS 250 AWD)		

Chassis

Vehicle Stability Control (VSC) ¹¹	Electronic system that monitors and helps control loss of traction in a turn using yaw-rate, deceleration, vehicle-speed and steering-wheel-angle sensors. Modulates engine power and applies individual brakes as necessary. Integrates Anti-lock Braking System (ABS), Brake Assist ¹⁸ and Traction Control (TRAC).
Vehicle Dynamics Management (VDIM) ¹¹	Advanced stability and traction management system designed to proactively but seamlessly integrate separate vehicle dynamic functions to enhance driver control and vehicle performance under a variety of adverse conditions. VDIM ¹¹ manages the integration of Electronically Controlled Braking (ECB), Electronic Power Steering (EPS), Variable Gear-Ratio Steering (VGRS), Vehicle Stability Control (VSC), ¹¹ Traction Control (TRAC), Anti-lock Braking System (ABS), Electronic Brakeforce Distribution (EBD) and Brake Assist ¹⁸ (IS 350 only).

Suspension	Front: Independent, double-wishbone with coil springs, gas-pressurized shock absorbers and hollow stabilizer bar Rear: Independent, multi-link with coil springs, inverted mono-tube gas-pressurized shock absorbers and stabilizer bar
Steering	Electronic vehicle-speed-sensing, progressive power-assisted rack-and-pinion. 2.9 turns lock to lock.
Brakes	Four-wheel power-assisted discs, with four-sensor, four-channel Anti-lock Braking System (ABS), Electronic Brakeforce Distribution (EBD) and Brake Assist ¹⁸ Four-piston front calipers. 13.1-in front, ¹³ 12.2-in rear ventilated discs. (IS 350) 11.6-in ventilated front, ¹³ 11.4-in solid rear discs (IS 250)

IS 350 Performance

0 - 60 MPH Acceleration	5.6 seconds ^{13,16}
1/4-Mile Acceleration	14.2 seconds ^{13,16}
Top Track Speed (electronically limited)	142 mph ¹³⁰
Fuel Consumption (estimated)	21/28 mpg ¹⁷ (city/highway)
Aerodynamic Drag Coefficient	0.28
Turning Circle	33.5 ft

IS 250 Performance

0 - 60 MPH Acceleration	7.9 seconds (RWD) ^{13,16} 8.3 seconds (AWD) ^{13,16}
1/4-Mile Acceleration	16.0 seconds (RWD) ^{13,16} 16.0 seconds (AWD) ^{13,16}
Top Track Speed (electronically limited)	140 mph (A/T RWD) ¹³⁰ 142 mph (M/T RWD) ¹³⁰ 130 mph (AWD) ¹³⁰
Fuel Consumption (estimated)	24/32 mpg (A/T RWD) ¹⁷ 20/29 mpg (M/T RWD) ¹⁷ 22/28 mpg (AWD) ¹⁷ (city/highway)
Aerodynamic Drag Coefficient	0.28
Turning Circle	33.5 ft (RWD) 35.5 ft (AWD)

Drivetrain

Transmission	Six-speed paddle-shift sequential automatic Electronically Controlled Transmission with intelligence (IS 350, IS 250 A/T RWD and IS 250 AWD) Six-speed manual transmission (IS 250 M/T RWD)
Drive Wheels	Rear, with standard Vehicle Dynamics Integrated Management (VDIM) ¹¹ (IS 350) Rear, with standard Vehicle Stability Control (VSC) ¹¹ (IS 250 RWD) Full-time all-wheel drive (AWD), with standard Vehicle Stability Control (VSC) ¹¹ (IS 250 AWD)
Final Drive Ratio	4.08:1 (IS 350) 3.90:1 (IS 250 A/T RWD) 3.72:1 (IS 250 M/T RWD) 4.10:1 (IS 250 AWD)

Standard Safety and Security Features

Driver's and front passenger's advanced airbag system (SRS) with front passenger's twin-chamber airbag¹⁵
Front seat-mounted side airbags (SRS)¹⁵
Front and rear side curtain airbags (SRS)¹⁵
Driver's and front passenger's knee airbags¹⁵
Three-point seatbelts for all seating positions, pre-tensioners with force limiters for front and outboard rear seats
Automatic Locking Retractor/Emergency Locking Retractor (ALR/ELR) seatbelts for all passenger seating positions.
Emergency Locking Retractor (ELR) only for driver's seat
Height-adjustable front shoulder belt anchors
Child Restraint Seat (CRS) tether anchor brackets for rear outboard seating positions
Four-wheel power-assisted disc brakes
Four-sensor, four-channel Anti-lock Braking System (ABS)
Vehicle Dynamics Integrated Management (VDIM)¹¹ (IS 350 only)
Vehicle Stability Control (VSC)¹¹
Traction Control (TRAC)
Brake Assist¹⁸
Electronic Brakeforce Distribution (EBD)
Lexus four-sensor Tire Pressure Monitor System¹⁹
Highly rigid body structure with front and rear crumple zones
Side-impact door beams
Reinforcements in pillars
Impact-dissipating upper interior trim
Collapsible steering column
Daytime running lights
Integrated foglamps
Water-repellant front-door glass
Variable intermittent windshield wipers with mist cycle
Rear-window defogger with auto-off timer
Power-adjustable outside mirrors with puddle lamps
Vehicle theft-deterrent and engine immobilizer system

Wheels and Tires	17 x 8.0-in alloy wheels with 225/45VR17 all-season tires front, 245/45VR17 all-season tires rear. ² (IS 350 and IS 250 RWD) 17 x 8.0-in alloy wheels with 225/45VR17 All-season tires. ² (IS 250 AWD) Optional: 18 x 8.0-in alloy wheels with 225/40YR18 tires front, 18 x 8.5-in alloy wheels with 255/40YR18 tires rear. ² (IS 350 and IS 250 RWD)
------------------	--

Standard Luxury Features

Metallic-finish interior trim
Leather-trimmed interior (RWD only)
Perforated leather-trimmed interior (IS 250 AWD only)
Leather-trimmed steering wheel and shift knob
Steering wheel-mounted cruise control, audio and display controls
Tilt-and-telescopic steering column
Lexus 13-speaker 194-watt³ Premium Sound System with Automatic Sound Levelizer (ASL) and in-dash, single-feed, six-disc CD auto-changer
MP3 audio input plug
In-glass antenna with FM-diversity system
10-way driver's and front passenger's (including lumbar) power seats
Heated and ventilated front seats (IS 250 AWD only)
Height-adjustable headrests for all seats, including rear-center
Dual-zone automatic climate control with interior air filter and automatic recirculation mode (IS 350 includes smog sensor)
Power tilt-and-slide moonroof with rotary dial adjustment, one-touch open/close and sliding sunshade
Power windows with one-touch auto open/close feature
Remote-linked window and moonroof opening
Retained accessory power for windows and moonroof
Electrochromic (auto-dimming) inside rearview mirror
Power door locks
SmartAccess with push-button start
Center console with sliding armrest, storage bin and accessory outlet
Foldable front door storage pockets
HomeLink[®] universal transceiver to operate compatible garage, gate, home lighting and home security systems
Electroluminescent instrumentation with startup sequence
Interior electronic trunk-lid and fuel-filler door releases
Lexus Personalized Settings (LPS) to personalize electronic functions
Automatic on/off projector-beam headlamps with 30-second delay

Disclaimers

- Ratings achieved using the required premium unleaded gasoline with an octane rating of 91 or higher. If premium fuel is not used, performance will decrease.
- Tires fitted with 17- or 18-in wheels are expected to experience greater tire wear than conventional tires. Tire life may be substantially less than 20,000 miles (17-in) or 15,000 miles (18-in), depending on driving conditions.
- 194 watts at 0.1% THD.
- The Lexus DVD Navigation System is designed to assist in locating an address or point of interest. Discrepancies may be encountered between the system and your actual location. Changes in street names, road closures, traffic flow or other road system changes may affect the accuracy of the mapping software. Rely on your common sense to decide whether or not to follow a specified route. Detailed coverage not available in every city. Optional periodic geographic updates available at an additional cost. See your Navigation System Owner's Manual and your Lexus dealer for details.
- The backup camera, available only with the navigation system, does not provide a comprehensive view of the entire rear area of the vehicle. You should also look around outside your vehicle and use your mirrors to confirm rearward clearance. Cold weather will limit effectiveness and view may become cloudy.
- While there are several Bluetooth[®] phones in the market, Lexus recommends the phones listed on its Web site because they have been tested and meet Lexus' standards for voice quality and functionality. Note that the recommendation of Lexus is not a warranty of the performance for any phone and that some problems may occur with any type of handset based on the service coverage available in your area.
- Satellite Radio requires XM[®] or SIRIUS compatibility, receiver and monthly service fee. See your Lexus dealer for further details. Reception of the satellite signal may vary depending on location. All fees and programming subject to change. Subscriptions subject to the terms and conditions available at www.xmradio.com or www.sirius.com. Available only in the 48 contiguous United States.
- Continuous average power, all channels driven, at 0.1% THD; 20-20,000 Hz.
- Mark Levinson is a registered trademark of Harman International Industries, Incorporated.
- These performance capacity figures are for comparison only, and were obtained with prototype vehicles by professional drivers using special safety equipment and procedures. Do not attempt.
- Vehicle Stability Control (VSC) and Vehicle Dynamics Integrated Management (VDIM) are electronic systems designed to help the driver maintain vehicle control under adverse conditions. They are not substitutes for safe driving practices. Factors including speed, road conditions and driver steering input can all affect whether VSC and VDIM will be effective in preventing a loss of control. Please see your Owner's Manual for further details.
- Dynamic Radar Cruise Control is designed to assist the driver and is not a substitute for safe and attentive driving practices. Please see your Owner's Manual for important cautions and instructions.
- High-friction brakes are standard equipment for the front brakes only and require periodic inspection and measurement as outlined in the Owner's Manual Supplement. The pads and rotors are expected to experience greater wear than conventional brakes. Pad life may be less than 20,000 miles, and brake rotor life may be less than 50,000 miles, depending on driving conditions.
- The Lexus Pre-Collision System is designed to help reduce the crash speed and damage in certain frontal collisions only. It is not a collision avoidance system and is not a substitute for safe and attentive driving. System effectiveness depends on many factors, such as speed, driver input and road conditions. Please see your Owner's Manual for further information.
- The Lexus driver's and front passenger's airbags, front seat-mounted side airbags, driver's and front passenger's knee airbags and side curtain airbags are Supplemental Restraint Systems (SRS). The driver's and front passenger's airbags and driver's and front passenger's knee airbags are designed to deploy in severe (usually frontal) collisions where the magnitude and duration of the forward deceleration of the vehicle exceed the design threshold level. The side airbags and side curtain airbags are designed to deploy in certain types of severe side-impact collisions. In all other accidents, the airbags will not deploy. To decrease the risk of injury from a deploying airbag, always wear your seatbelt, sit upright in the middle of the seat, and do not lean against the door. Do not put objects in front of an airbag or around the seatback. Do not use a rearward-facing child seat in any front passenger seat. The force of a deploying airbag SRS may cause serious injury or death. Please see your Owner's Manual for further instructions. Vehicle complies with "advanced airbag" requirements of FMVSS 208.
- Preliminary manufacturer's estimates.
- EPA-estimated ratings: 24/32 city/highway mpg (IS 250 RWD A/T), 20/29 city/highway mpg (IS 250 RWD M/T), 22/28 city/highway mpg (IS 250 AWD), 21/28 city/highway mpg (IS 350). Actual mileage may vary.
- Brake Assist is designed to help the driver take full advantage of the benefits of ABS. It is not a substitute for safe driving practices. Braking effectiveness also depends on proper brake-system maintenance and tire and road conditions.
- The Lexus Tire Pressure Monitor System alerts driver when tire pressure is critically low. For optimal tire wear and performance, tire pressure should be checked regularly with a gauge; do not rely solely on the monitor system. See your Owner's Manual for details.
- Coverage only available in the continental U.S. and Canada. Please see your Lexus dealer for details on our Roadside Assistance program.

Warranty

Four-year/50,000-mile Lexus Limited Warranty. Six-year/70,000-mile Powertrain Warranty. Six-year/unlimited-mileage Corrosion Perforation Warranty. All warranties with zero deductible. See the IS Owner's Manual Supplement at your Lexus dealer for details.

YOUR JOURNEY WITH LEXUS IS READY TO BEGIN.

The Lexus ownership experience is a magnificent journey within itself. Measured not in mileage, but in moments. Flashes in time that delight you, inspire you. That in whatever small way, enrich your life.

You'll feel it in the peace of mind you get from our well-earned reputation for unparalleled vehicle quality and dependability.

You'll feel it in the pride of knowing that Lexus puts a high priority on the wise use of natural resources as shown in the certification of every vehicle we build.

And you'll feel it in our award-winning customer service, where every dealership goes to great lengths to accommodate you.

This journey of Lexus ownership is the reason our owners are some of the most satisfied drivers on the road today.

And why so many of them continue to return again and again.

Because we understand that whether your travels take you to Berlin or simply around the block for errands, the miles of road left behind you will be a distant memory. But the moments along the way will last a lifetime.

Customer Satisfaction. Your total and complete satisfaction is our highest priority. Which is why you may find our dealerships provide such amenities as offices you can use for business, free pickup and delivery, service loaner vehicles, complimentary car washes, concierge services and even 24-hour emergency Roadside Assistance²⁰ for your first four years of ownership.

Responsible Thinking. As part of an effort to reduce emissions whenever possible, every Lexus vehicle built since 2004 has been certified as either a Low-Emission Vehicle (LEV), Ultra-Low Emission Vehicle (ULEV or ULEV II) or Super Ultra-Low Emission Vehicle (SULEV).

Value/Dependability/Quality. Our commitment to build the finest vehicles in the world has not wavered since our inception. Seen in such ways as projected low repair costs and high retained value, our pursuit of perfection has never been stronger.





2006

lexus.com P6-1004 (10/05) 00217-IS350-06 Printed in U.S.A. (200M) ©2005 Lexus. Specifications, features, equipment, technical data, performance figures, options, and color and trim are based upon information available at time of printing, are subject to change without notice, are for mainland U.S.A. vehicles and may differ in the state of Hawaii, Puerto Rico, the U.S. Virgin Islands and in other regions. Vehicles available with optional equipment. Optional equipment listed may not be available separately or in all regions. See your Lexus dealer for details. Lexus reminds you to wear seatbelts, secure children in rear seat, obey all traffic laws and drive responsibly. For more information, call 800-USA-LEXUS (872-5398) or visit lexus.com. To learn more about your financing options, contact your Lexus dealer or call Lexus Financial Services at 800-874-7050.