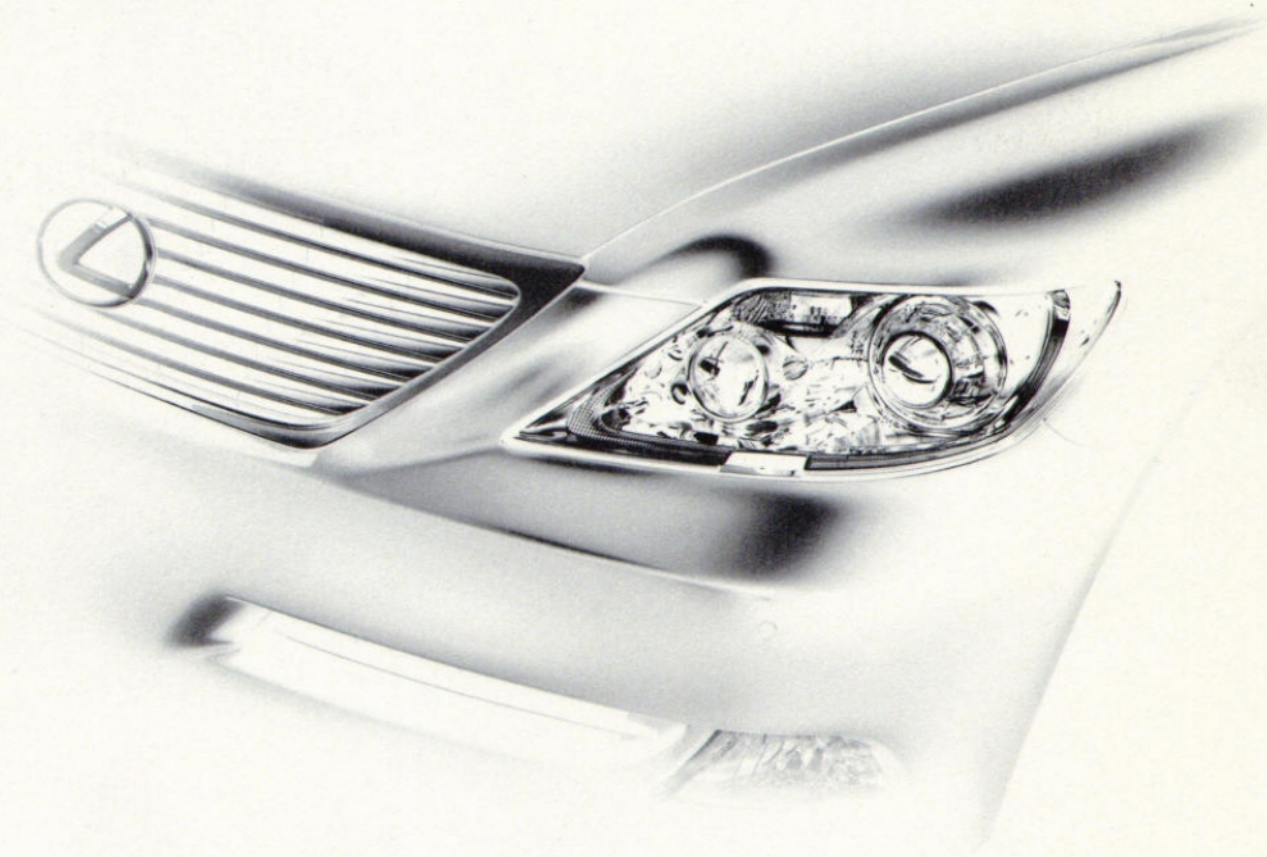


07 LEXUS LS





2007 LEXUS LS: Angle Study No. 1



2007 LEXUS LS: Angle Study No. 2



2007 LEXUS LS: Angle Study No. 3





2007 LEXUS LS: Angle Study No. 5



Vehicle shown with available equipment.

LS EXTERIOR COLORS



MERCURY METALLIC

STARFIRE PEARL

OBSIDIAN

BLACK SAPPHIRE PEARL

SMOKY GRANITE MICA

NOBLE SPINEL MICA

GOLDEN ALMOND METALLIC

VERDIGRIS MICA

LS INTERIOR COLORS & WOOD TRIM



CASHMERE LEATHER

LIGHT GRAY LEATHER

ALABASTER LEATHER

BLACK LEATHER

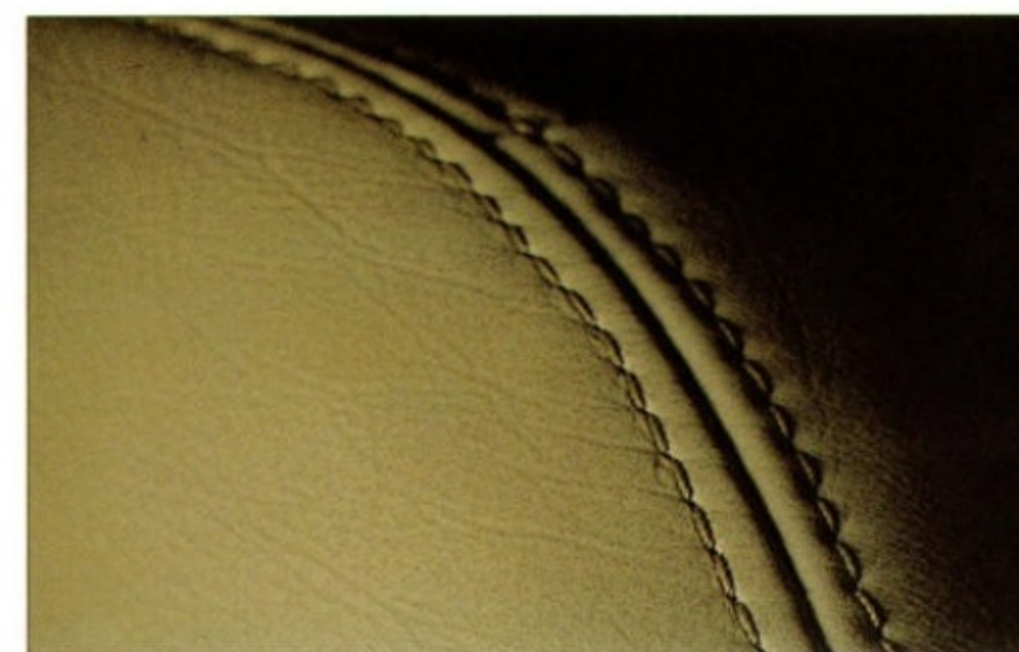
MEDIUM BROWN WALNUT

DARK GRAY BIRD'S-EYE MAPLE

DARK BROWN ASH BURL

	MERCURY METALLIC	STARFIRE PEARL	OBSIDIAN	BLACK SAPPHIRE PEARL	SMOKY GRANITE MICA	NOBLE SPINEL MICA	GOLDEN ALMOND METALLIC	VERDIGRIS MICA	MEDIUM BROWN WALNUT	DARK GRAY BIRD'S-EYE MAPLE	DARK BROWN ASH BURL
CASHMERE		▪	▪	▪		▪	▪	▪	▪		
LIGHT GRAY	▪	▪	▪	▪	▪	▪		▪		▪	
ALABASTER		▪	▪	▪	▪	▪	▪	▪			▪
BLACK	▪	▪	▪	▪	▪	▪			▪		

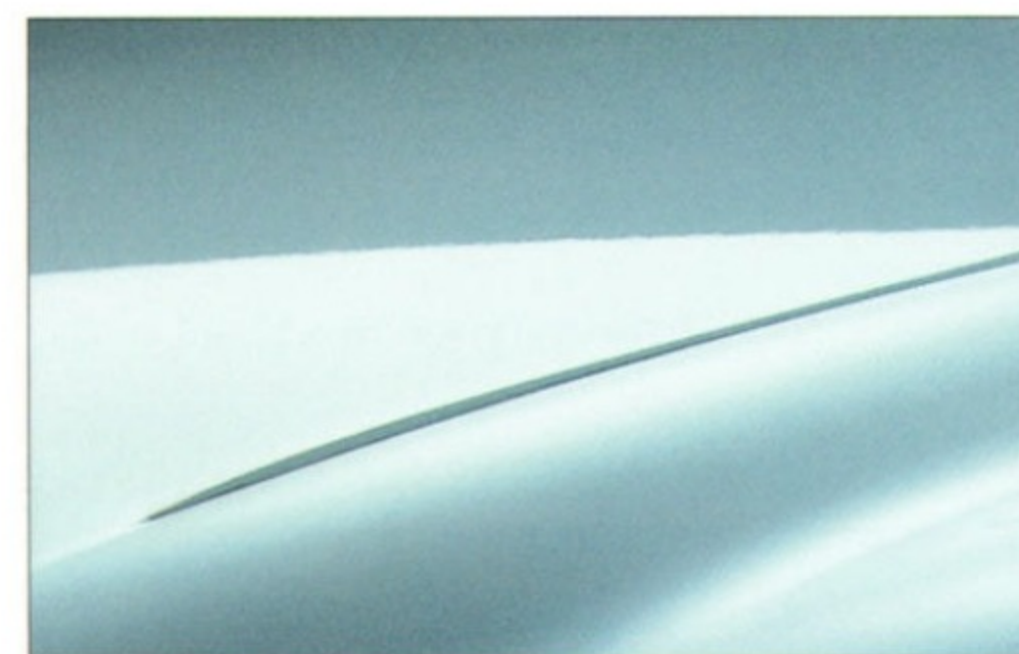
Leather-trimmed and perforated leather-trimmed interiors are available.



LEATHER



WOOD



STEEL



PLASTIC

ELEMENTS OF LUXURY

4 3/8" x 2 1/8" shapes
Los Angeles, 2007

The Lexus Pursuits Visa® Card offers 1.5 points on every dollar spent and 5 points on every dollar spent at Lexus dealerships.¹ Points can be redeemed at Lexus dealerships for service, accessories and up to 10% off a new Lexus purchase or lease.² All without an annual fee. For complete details call 888-777-5555, ext. 1300 or visit www.lexuspursuits.com.

And, for information on Lexus Financial Services' competitive financing and vehicle protection programs, visit www.lexusfinancial.com.

1. Please contact your participating Lexus dealership for information regarding restrictions your dealership may impose on the use of credit cards related to vehicle purchases or leases.
2. Restrictions may apply and are fully described in the Lexus Pursuits Rewards Terms and Conditions. Rewards redemption at dealerships not available in Hawaii.
The creditor and issuer of the Lexus Pursuits Visa® Card is Lexus Financial Savings Bank.

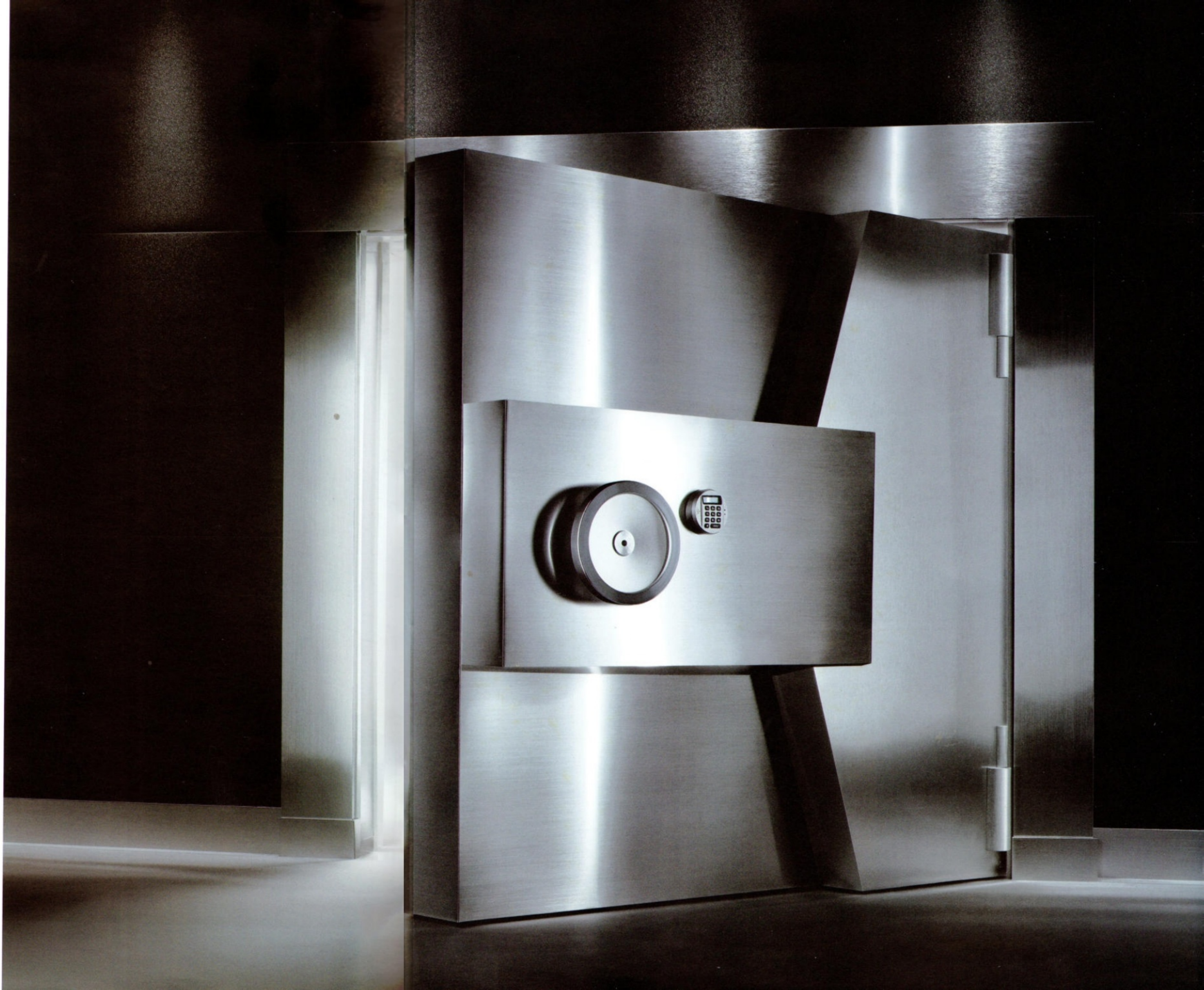
07 LEXUS LS

A Photographic Portfolio



THE NEW PLATINUM STANDARD

Presenting a brand-new benchmark: the all-new 2007 Lexus LS. An automobile forged from inspiration, innovation and the bold desire to build the most sophisticated sedan in the world. The result is a vehicle so accomplished, it features the world's first eight-speed automatic transmission, uses an available infrared sensor to monitor body temperature and offers a long wheelbase with so much cabin space, it accommodates a leather-trimmed ottoman seat. And with the new, available Advanced Parking Guidance System,¹ it can also virtually parallel park itself. The LS is an unprecedented blend of performance, technology and perfectly crafted luxury. It is, simply, the next standard in the pursuit of perfection.





Vehicle shown with available equipment.

**WORLD'S FIRST EIGHT-SPEED
AUTOMATIC TRANSMISSION**

*High-Speed Film
California Jetway, 2007*

For even smoother transitions during shifting, the LS adds two new gears to deliver the world's first eight-speed automatic transmission. Coupled with a highly advanced 4.6-liter V8 engine, it generates an impressive 380 horsepower² and 367 lb-ft of torque.² And propels the new LS from 0 to 60 in 5.4 seconds.^{2,3}

AVAILABLE LS WORLD-FIRSTS:

Luxury Full Hybrid V8, Spring 2007

Four-zone automatic climate control with infrared sensor

Advanced Parking Guidance System¹ on a luxury vehicle



SAFETY: THE LEXUS PERSPECTIVE

Extensive Airbag System (SRS)⁴

Vehicle Dynamics Integrated Management (VDIM)⁵

Dual-swivel Adaptive Front Lighting System (AFS) with
High-Intensity Discharge (HID) headlamps

SmartAccess⁶ with push-button Start/Stop

Electronic Controlled Braking (ECB) system

Brake Assist⁷

Electronic Brakeforce Distribution (EBD)

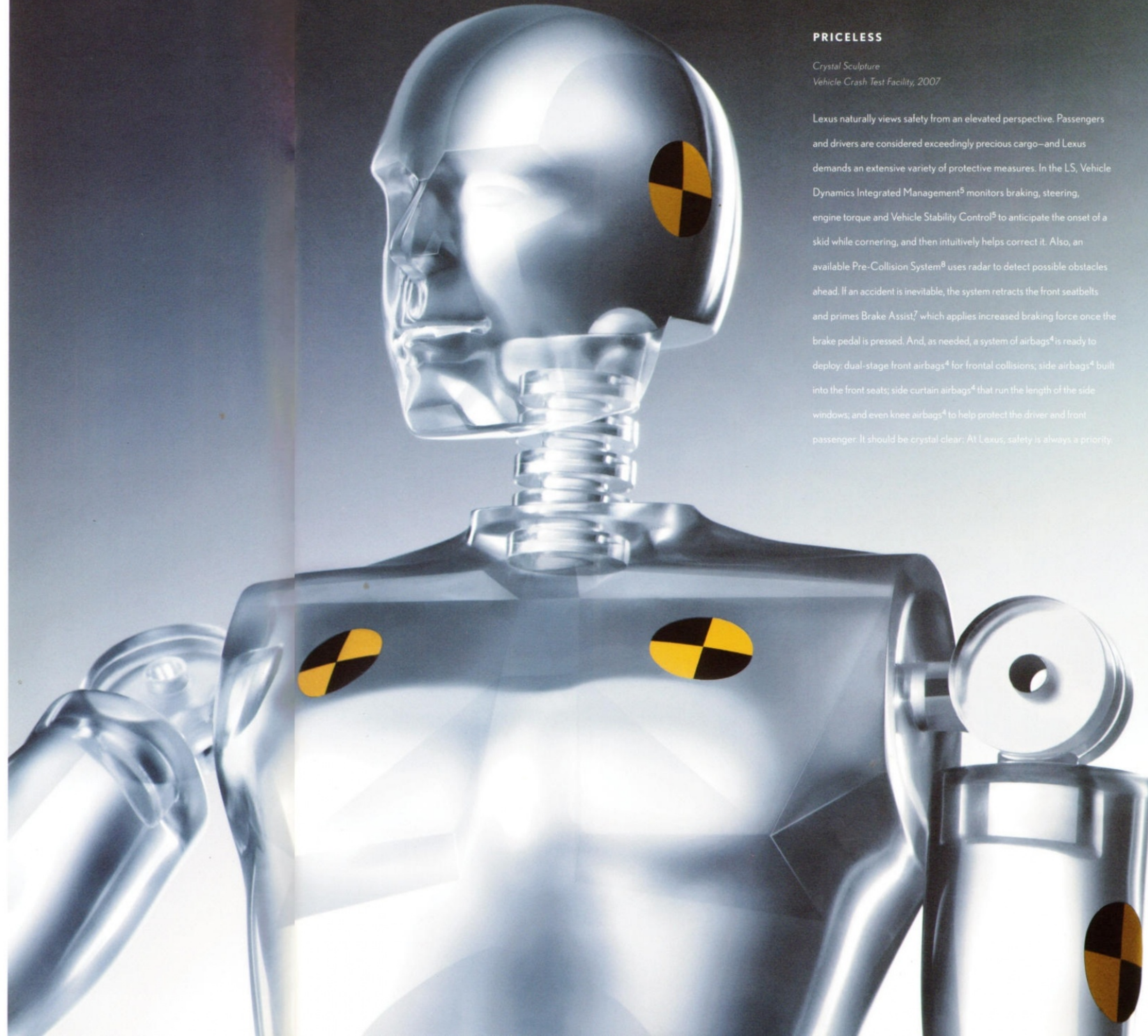
Automatic Electronic Parking Brake

Available Pre-Collision System (PCS)⁸

PRICELESS

*Crystal Sculpture
Vehicle Crash Test Facility, 2007*

Lexus naturally views safety from an elevated perspective. Passengers and drivers are considered exceedingly precious cargo—and Lexus demands an extensive variety of protective measures. In the LS, Vehicle Dynamics Integrated Management⁵ monitors braking, steering, engine torque and Vehicle Stability Control⁵ to anticipate the onset of a skid while cornering, and then intuitively helps correct it. Also, an available Pre-Collision System⁸ uses radar to detect possible obstacles ahead. If an accident is inevitable, the system retracts the front seatbelts and primes Brake Assist⁷, which applies increased braking force once the brake pedal is pressed. And, as needed, a system of airbags⁴ is ready to deploy: dual-stage front airbags⁴ for frontal collisions; side airbags⁴ built into the front seats; side curtain airbags⁴ that run the length of the side windows; and even knee airbags⁴ to help protect the driver and front passenger. It should be crystal clear: At Lexus, safety is always a priority.



45 DEGREES

*Motion Study
Interior, 2007*

Reaching for an entirely new level of luxury, the long-wheelbase LS 460 L stretches to nearly 203 inches in length. Taking full advantage of the resulting extra legroom, Lexus designed the rear-seating area with the rarefied feel of a corporate jet. Several interior packages are available including the special-order Executive-Class Seating Package. On its rear passenger side, it features a power leather-trimmed ottoman with legrest[®] that can adjust to a comfortable 45-degree angle, a rear-seat DVD system, a foldaway wood-trimmed table and even a multifunction seat massager.

Available Rear-Seat Amenities:

Right backseat reclines 45 degrees

Right-backseat power-adjustable legrest[®] and massager

DVD Rear-Seat Entertainment System (RSES)

Rear-seat cool box

Retractable wood-trimmed table

Climate-comfort seats with heat/cool knob

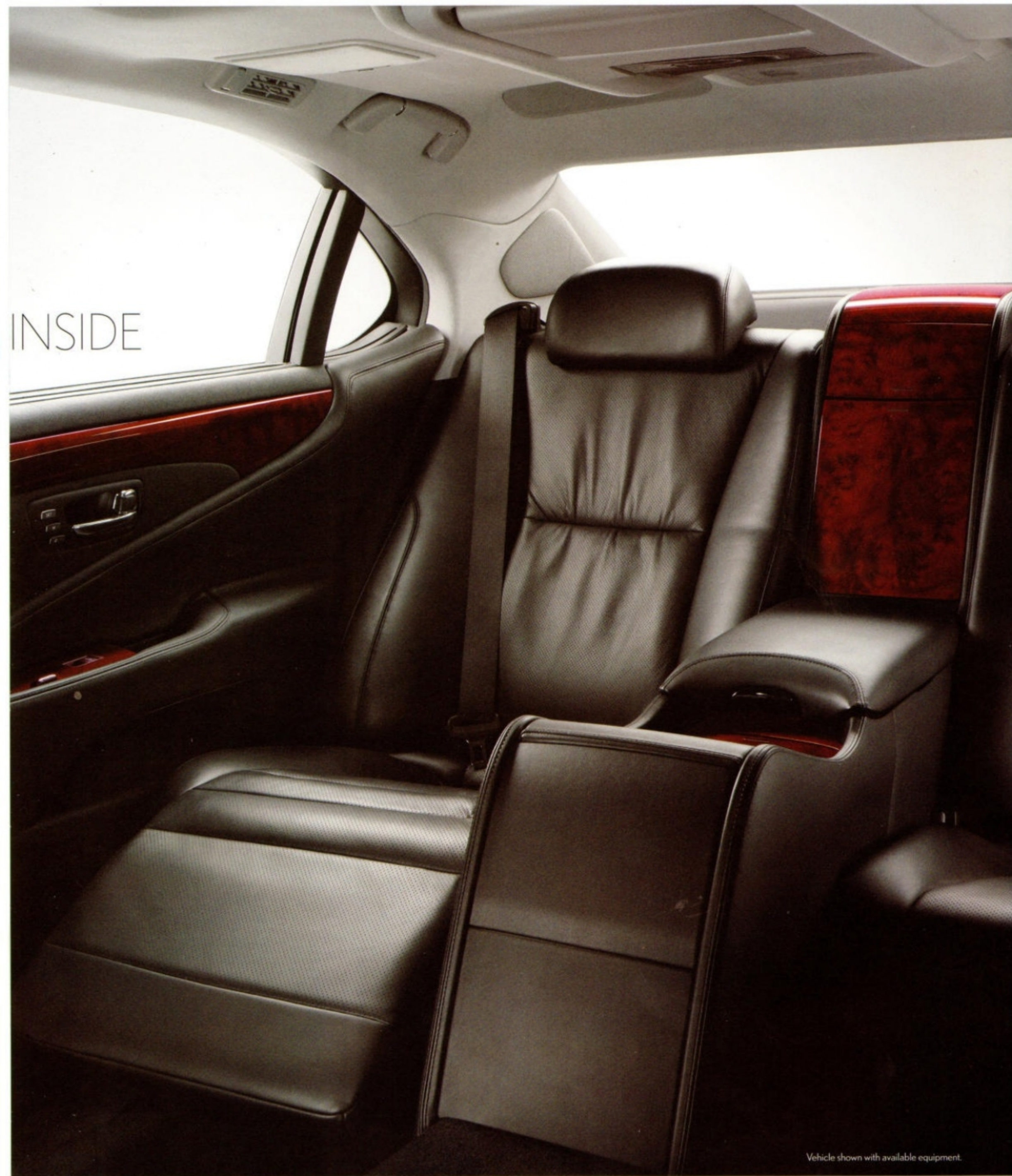
Power rear-door sunshades

Power rear sunshade

Air Purifier



LIFE ON THE INSIDE

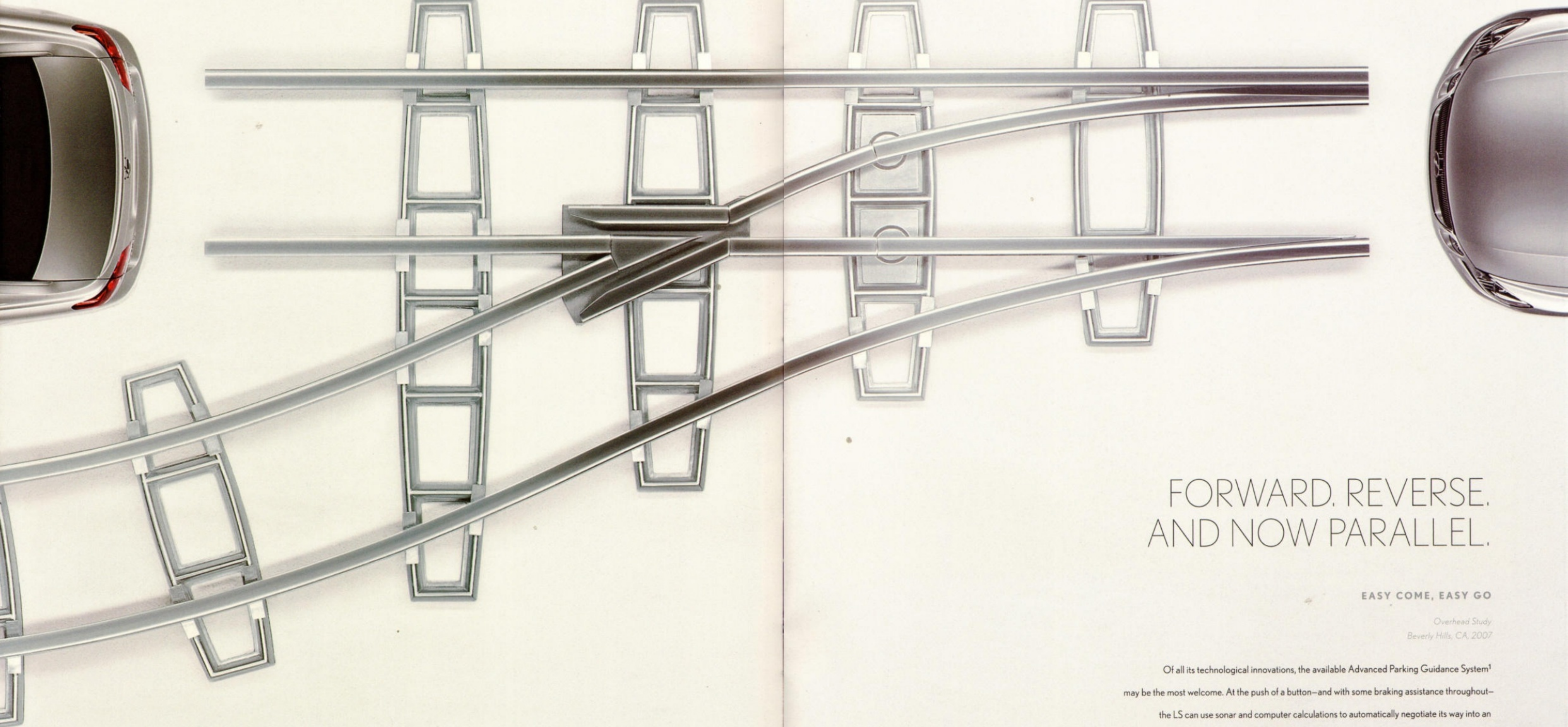


Vehicle shown with available equipment.



INSIDE



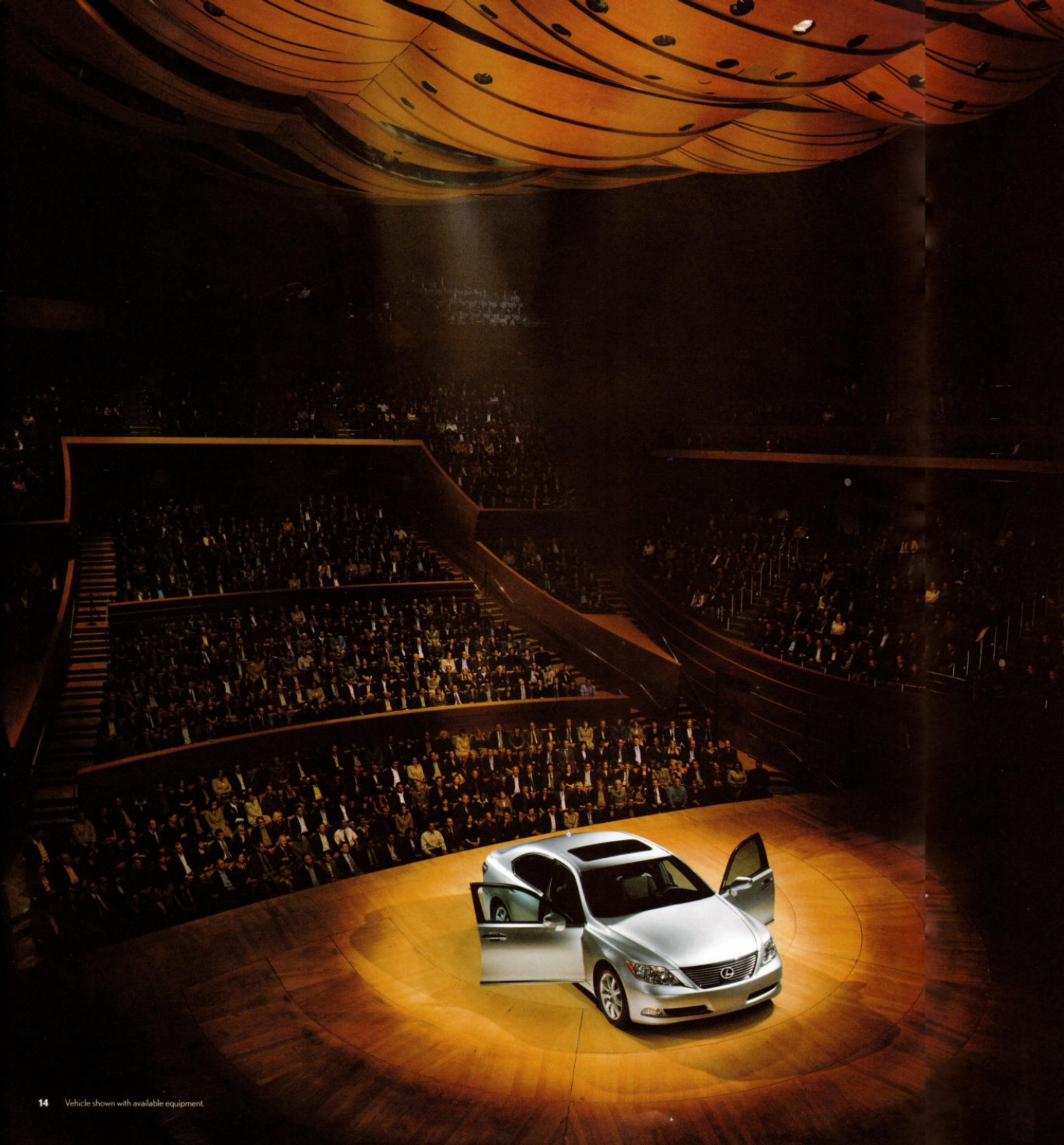


FORWARD. REVERSE. AND NOW PARALLEL.

EASY COME, EASY GO

*Overhead Study
Beverly Hills, CA, 2007*

Of all its technological innovations, the available Advanced Parking Guidance System¹ may be the most welcome. At the push of a button—and with some braking assistance throughout—the LS can use sonar and computer calculations to automatically negotiate its way into an appropriately sized parking spot. In fact, once programmed, you won't even have to use your hands. Just relax and enjoy parallel parking as a precise, graceful and virtually effortless endeavor.



ENCORE

*Orpheum
Los Angeles, 2007*

An available 19-speaker Mark Levinson® Reference Surround Sound Audio System,¹⁰ 450 watts¹¹ of sound, and one of the quietest cabins in the world combine to give the LS superb, near-concert-quality sound. Musical connoisseurs will appreciate rich tonal qualities, dynamic clarity and an Automatic Sound Levelizer that intuitively raises or lowers the overall volume depending on fluctuations in outside noise.



Hard Disc Drive (HDD) audio server with 2,000-song capacity

19 speakers

Acoustically quiet cabin

450 watts at 0.1% Total Harmonic Distortion (THD)¹¹

71-channel surround sound speaker architecture

In-dash, single-feed, six-disc DVD/CD auto-changer

Available XM® Satellite Radio¹²



TRAFFIC MANEUVERS

*Astronomy Series
San Francisco, 2007*

Wherever your travels take you, you're likely to be covered with Lexus' most sophisticated available Navigation System.¹³ It retrieves information from a 30-GB Hard Disc Drive that handles more information faster than DVD-based NAVs. And it utilizes dynamic route guidance.¹³ Real-Time Traffic updates provided by XM that include, where available, accidents, construction and average speed of traffic. If needed, it then offers helpful alternate route options. This easy-to-use Navigation System¹³ gives directions to over eight million points of interest with up to three routes: the quickest, the shortest and an alternative. And for a hands-free experience, it not only responds to more than 100 spoken commands, but Bluetooth[®] technology¹⁴ enables you to place a call while your compatible cell phone is in your pocket. The NAV screen also features brilliant resolution and displays up to 32,000 colors.



30-GB Hard Disc Drive (HDD)

Increased screen resolution and 32,000 display colors

Voice-activated destination input

Voice-activated dial by name and dial by number

Dynamic route guidance¹³

Spanish and French language guidance capability

Real-time traffic updates provided by XM[®] NavTraffic^{™13}

MULTIPLIED POWER

Through intelligent engineering, the LS offers exponentially more power than ever before—380 horsepower² and 367 lb-ft of torque.² Its unique fuel-injection system utilizes both port and direct injectors for more precise delivery of fuel and better management of the air/fuel ratio in the combustion chamber. Part of what makes this direct injection so efficient is the piston's contour, which directs a richer concentration of gasoline toward the spark plug—resulting in more intense combustion. Also, dual Variable Valve Timing with intelligence (VVT-iE) continuously monitors the engine's speed and load, and responds by automatically increasing torque at lower speeds and increasing horsepower at higher speeds. Additionally, a new electronic intake valve control improves the dual VVT-iE's response in all temperatures over the previous hydraulic system. These innovations also help reduce emissions: The LS is rated an Ultra-Low Emission Vehicle. But most obviously, they bolster its elegant ride with seemingly unstoppable race-like power.

4.6-liter V8 with dual Variable Valve Timing with intelligence (VVT-iE)

380 hp² and 367 lb-ft of torque²

0 to 60 in 5.4 seconds,^{2,3}

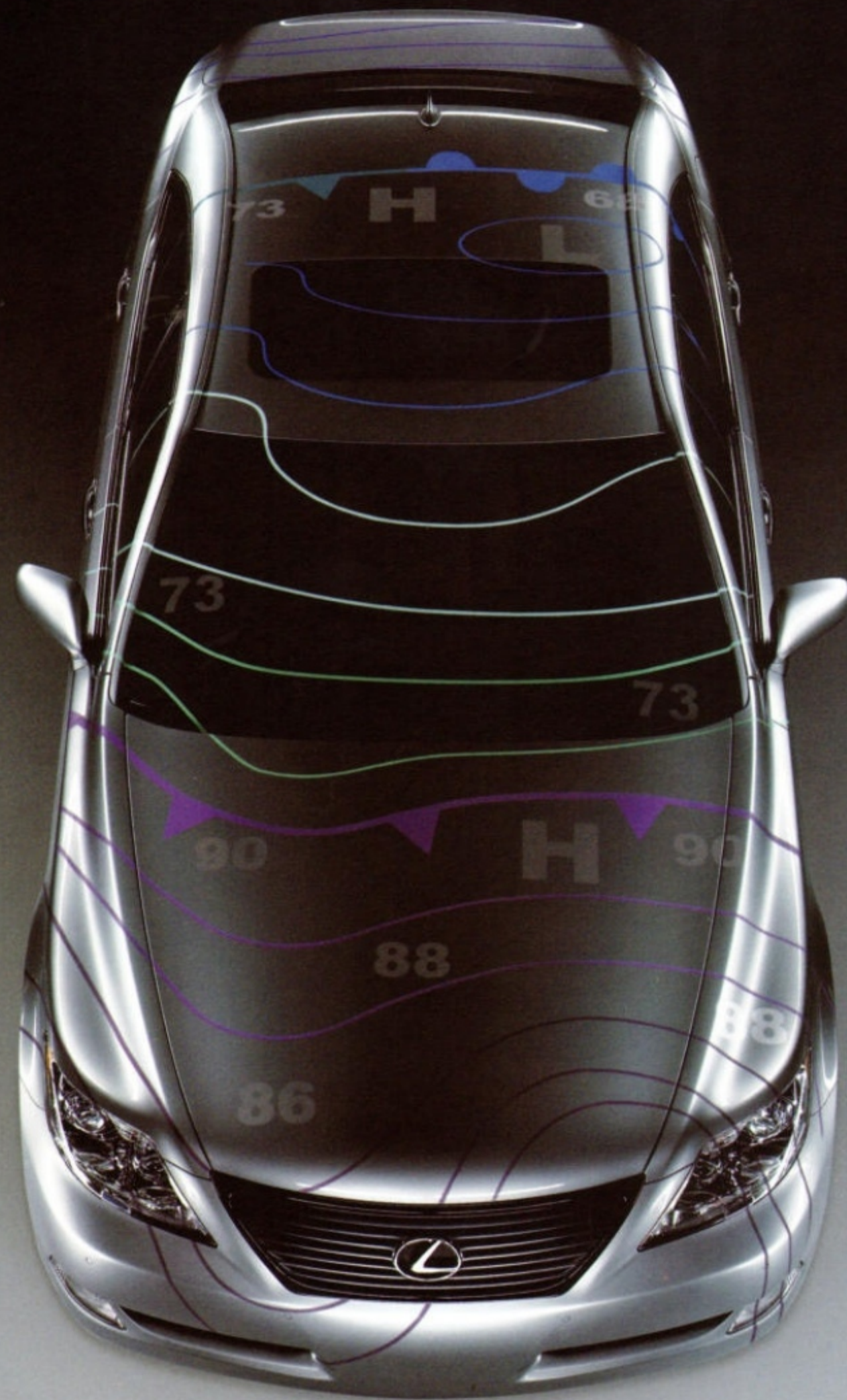
Ultra-Low Emission Vehicle (ULEV II)

Electronic power steering

Available Adaptive Variable Air Suspension (AVS)

Available high-friction brakes¹⁵





FORECAST: SUBLIME

*Projection No. 4
Los Angeles, 2007*

To enhance the available four-zone climate control and achieve optimal interior comfort, the LS provides an available infrared sensor to determine individual body temperature for the backseat passengers. The vehicle then automatically adjusts the heated and cooled seating to the predetermined temperature—ensuring a most comfortable, Lexus-like ride.

OPTION PACKAGES

Navigation System/Advanced Parking Guidance System Package (LS 460)

Advanced Parking Guidance System¹— requires Intuitive Parking Assist
Lexus voice-activated HDD Navigation System¹³ with backup camera,¹⁶ Bluetooth[®] technology,¹⁴ XM Satellite Radio¹² and Real-Time Traffic capability¹³

Navigation System/Mark Levinson Reference Audio System Package (LS 460)

Lexus voice-activated HDD Navigation System¹³ with backup camera,¹⁶ Bluetooth[®] technology,¹⁴ XM Satellite Radio¹² and Real-Time Traffic capability¹³
Mark Levinson 19-speaker, 450-watt @ 0.1% THD¹¹ Reference Surround Sound Audio System¹⁰ with Hard Disk Drive, 7.1 architecture and in-dash, single-feed, six-disc DVD/CD auto-changer featuring DVD-audio and DVD-video playback

Navigation System/Mark Levinson Reference Audio System/Advanced Parking Guidance System Package (LS 460)

Advanced Parking Guidance System¹— requires Intuitive Parking Assist
Lexus voice-activated HDD Navigation System¹³ with backup camera,¹⁶ Bluetooth[®] technology,¹⁴ XM Satellite Radio¹² and Real-Time Traffic capability¹³
Mark Levinson 19-speaker, 450-watt @ 0.1% THD¹¹ Reference Surround Sound Audio System¹⁰ with Hard Disk Drive, 7.1 architecture and in-dash, single-feed, six-disc DVD/CD auto-changer featuring DVD-audio and DVD-video playback

Comfort Package (LS 460)
Wood- and leather-trimmed heated steering wheel
Climate-comfort front seats with heat/cool knob
Heated rear seats
Power rear sunshade
Headlamp washers

Comfort Plus Package (LS 460)
Wood- and leather-trimmed heated steering wheel
Climate-comfort front and rear seats with heat/cool knob
Power rear seats with power headrests and memory
Power rear sunshade
Headlamp washers
Rear-seat side airbags (SRS)⁴

Luxury Package (LS 460 L)
Semi-aniline leather-trimmed interior
Climate-comfort rear seats with heat/cool knob
Power rear seats with power headrests and memory
Eccaine headliner
Rear-seat side airbags (SRS)⁴

Rear-Seat Upgrade Package— requires Luxury Package (LS 460 L)
Four-zone automatic climate control with interior air filter, smog sensor and automatic recirculation mode
Rear-seat Air Purifier
Rear-seat audio controls
Rear-seat cool box
Power rear-door sunshades

Executive-Class Seating Package (LS 460 L, special order only)
Four-person seating with rear fixed console¹⁷
Semi-aniline leather-trimmed interior
Four-zone automatic climate control with rear-seat infrared temperature sensor, interior air filter and automatic recirculation mode
Rear-seat Air Purifier
Climate-comfort rear seats with heat/cool knob
Right-rear power recliner with multifunction massager and legrest⁹
Power rear seats with power headrests and memory
Rear-seat wood-trimmed table
Lexus DVD Rear-Seat Entertainment System (RSES)
Rear-seat audio controls
Rear-seat cool box
Power rear-door sunshades
Eccaine headliner
Rear-seat side airbags (SRS)⁴

Touring Package (LS 460 L)
19 x 8.0-in alloy wheels 245/45R19 tires^{18,19}
Variable Gear-Ratio Steering (VGRS)
Adaptive Variable Air Suspension (AVS)
High-friction brakes¹⁵ with larger rotors

INDIVIDUAL OPTIONS AND ACCESSORIES

Adaptive Variable Air Suspension (AVS) and Variable Gear-Ratio Steering (VGRS) (LS 460 L)
Mark Levinson 19-speaker, 450-watt @ 0.1% THD¹¹ Reference Surround Sound Audio System¹⁰ with Hard Disk Drive, 7.1 architecture and in-dash, single-feed, six-disc DVD/CD auto-changer featuring DVD-audio and DVD-video playback (LS 460 L)
Lexus voice-activated HDD Navigation System¹³ with backup camera,¹⁶ Bluetooth[®] technology,¹⁴ XM Satellite Radio¹² and Real-Time Traffic capability¹³ (standard on LS 460 L)
Intuitive Parking Assist
Advanced Parking Guidance System¹— requires Intuitive Parking Assist (LS 460 L)
Power door closers and power rear trunk open/close (standard on LS 460 L)
Lexus Pre-Collision System (PCS)⁸ and Dynamic Radar Cruise Control²⁰
Lexus Link^{®21}
All-weather floor mats
Premium carpet floor mats (Available Spring 2007)
Trunk mats
Cargo net
Wireless headphones²²
Car cover
18-in alloy wheels^{18,19}
Wheel locks
Leather care kit



18-INCH ALLOY WHEEL^{18,19}
(STANDARD)



18-INCH ALLOY WHEEL^{18,19}
(ACCESSORY)



19-INCH ALLOY WHEEL^{18,19}
(TOURING PACKAGE)

ENGINES

Type	90° V8, aluminum block and heads, certified Ultra-Low Emission Vehicle (ULEV II)
Displacement	4.6 liters (281 cubic inches)
Valvetrain	Four cam, four valves per cylinder, with dual Variable Valve Timing with intelligence (VVT-iE)
Compression Ratio	11.8:1
Horsepower at RPM	380 hp @ 6,400 ²
Torque at RPM	367 lb-ft @ 4,100 ²



PERFORMANCE

0 - 60 MPH Acceleration	5.4 seconds ^{2,3}
1/4-Mile Acceleration	13.8 seconds ^{2,3}
Top Track Speed (electronically limited)	130 mph ^{2,3}
Fuel Consumption (estimated)	19/27 mpg ²³ (city/highway)
Aerodynamic Drag Coefficient	0.26
Turning Circle	35.4 ft (LS 460) 36.0 ft (LS 460 L)

BODY, DIMENSIONS

Type	Five-passenger luxury sedan Available four-passenger premium configuration (LS 460 L) ¹⁷
Construction	Welded-steel unibody
Overall Length	198.0 in (5,029 mm) (LS 460) 202.8 in (5,151 mm) (LS 460 L)
Width	73.8 in (1,874 mm)
Height	58.1 in (1,475 mm) 57.7 in (1,465 mm) (with available Adaptive Variable Air Suspension)
Wheelbase	116.9 in (2,969 mm) (LS 460) 121.7 in (3,091 mm) (LS 460 L)
Curb Weight	4,244 lb (1,925 kg) (LS 460) 4,332 lb (1,964 kg) (LS 460 L)
Fuel-Tank Capacity	22.2 gallons (84 L)
Trunk Capacity	18.0 cubic feet (509 L) 12.0 cubic feet (339 L) (with Rear-Seat Upgrade Package or Executive-Class Seating Package)
Headroom	38.0/38.0 in (965/965 mm) (front/rear)
Shoulder Room	58.5/56.9 in (1,485/1,445 mm) (front/rear) (LS 460) 58.5/56.4 in (1,485/1,432 mm) (front/rear) (LS 460 L)

DRIVETRAIN

Drive Wheels	Rear, with Vehicle Dynamics Integrated Management ⁵
Transmission	Eight-speed sequential-shift automatic Electronically Controlled Transmission with intelligence (ECT-i)
Final Drive Ratio	2.937:1

CHASSIS

Vehicle Dynamics Integrated Management (VDIM) ⁵	Advanced stability and traction management system designed to proactively but seamlessly integrate separate vehicle dynamic functions to enhance driver control and vehicle performance under a variety of adverse conditions. VDIM ⁵ manages the integration of Electronic Controlled Braking (ECB), Electronic Power Steering (EPS), available Variable Gear-Ratio Steering (VGRS), Vehicle Stability Control (VSC) ⁵ , Traction Control (TRAC), Anti-lock Braking System (ABS), Electronic Brakeforce Distribution (EBD) and Brake Assist ⁷
Suspension	Front: Independent upper and lower multi-link double joint suspension arms with coil-over mono-tube shock absorbers and stabilizer bar Rear: Independent multi-link double-joint suspension arms with coil-over mono-tube shock absorbers and stabilizer bar Available height-adjustable Adaptive Variable Air Suspension (AVS) with electronically modulated damping
Steering	Electronic Power Steering system (EPS) Available Variable Gear-Ratio Steering (VGRS), 2.5-3.6 turns lock-to-lock
Brakes	Four-wheel power-assisted disc brakes with Electronic Controlled Braking (ECB), four-sensor, four-channel Anti-lock Braking System (ABS), Electronic Brakeforce Distribution (EBD) and Brake Assist ⁷ 13.4-in ventilated front, ¹⁵ 12.4-in ventilated rear discs 14.1-in ventilated front ¹⁵ 13.3 ventilated rear discs ¹⁵ (with available Touring Package)
Wheels and Tires ^{18,19}	18 x 7.5-in alloy wheels with 235/50R18 tires. Full-size spare tire on alloy wheel Optional wheels and tires: 19 x 8.0-in alloy wheels with 245/45R19 tires

STANDARD LUXURY FEATURES

Medium brown walnut, dark gray bird's-eye maple or dark brown ash burl interior wood trim

Leather-trimmed interior

Wood- and leather-trimmed steering wheel

Wood- and leather-trimmed heated steering wheel (LS 460 L)

Steering-wheel-mounted audio, brake hold and display controls

Power tilt-and-telescopic steering column

Lexus voice-activated HDD Navigation System¹³ with backup camera,¹⁶ Bluetooth[®] technology,¹⁴ XM Satellite Radio¹² and Real-Time Traffic capability¹³ (LS 460 L)

Lexus 10-speaker, Premium Sound System with Digital Sound Processor, Automatic Sound Levelizer (ASL) and in-dash, single-feed, six-disc CD auto-changer

Auxiliary iPod[®]/MP3/Windows Media[®] Audio (WMA) port

In-glass antenna with FM-diversity system

Shark-fin antenna (LS 460 L)

16-way driver's (including dual-function lumbar) and 12-way front passenger's (including lumbar) power seats

Heated front seats

Climate-comfort front seats with heat/cool knob (LS 460 L)

Height-adjustable headrests for all seats

Lexus Memory System for power driver's seat (except lumbar), outside mirrors and steering wheel

Dual-zone automatic climate control with interior air filter, smog sensor and automatic recirculation mode

Power tilt-and-slide moonroof with one-touch open/close and sliding sunshade

Power windows with one-touch auto open/close feature

Exterior glass with UV reduction

Laminated side glass (LS 460 L)

Remote-linked window and moonroof opening

Retained accessory power for moonroof and windows

Power rear sunshade (LS 460 L)

Electrochromic (auto-dimming) inside rearview mirror and outside mirrors

Power door locks

Power door closers (LS 460 L)

Power rear trunk open/close (LS 460 L)

Cruise control

SmartAccess[®] with push-button Start/Stop

Center console with sliding armrest and storage bin

HomeLink[®] universal transceiver to operate compatible garage, gate, home lighting and home security systems

Illuminated entry system

Electroluminescent instrumentation

Illuminated interior electronic trunk-lid and fuel-filler door releases

Front- and rear-lighted vanity mirrors

Automatic on/off projector-beam headlamps with auto-off delay

Electronic parking brake

Carpeted floor mats

STANDARD SAFETY AND SECURITY FEATURES

Driver's and front passenger's advanced airbag system (SRS)⁴ with front passenger's twin-chamber airbag⁴

Front seat-mounted side airbags (SRS)⁴

Driver's and front passenger's knee airbags (SRS)⁴

Front and rear side curtain airbags (SRS)⁴

Three-point seatbelts for all seating positions, pre-tensioners with force limiters for front and outboard rear seats

Automatic Locking Retractor/Emergency Locking Retractor (ALR/ELR) seatbelts for all passenger seating positions. Emergency Locking Retractor (ELR) only for driver's seat

Height-adjustable front shoulder belt anchors

Child Restraint Seat (CRS) tether anchor brackets for all rear seating positions

Four-wheel ventilated power-assisted disc brakes

Electronic Controlled Braking (ECB)

Four-sensor, four-channel Anti-lock Braking System (ABS)

Vehicle Dynamics Integrated Management (VDIM)⁵

Vehicle Stability Control (VSC)⁵

Traction Control (TRAC)

Brake Assist⁷

Electronic Brakeforce Distribution (EBD)

Lexus five-sensor Tire Pressure Monitor System²⁴

Highly rigid body structure with front and rear crumple zones

Side-impact door beams

Reinforcements in pillars and door sills

Impact-dissipating upper interior trim

Collapsible steering column

High-Intensity Discharge (HID) headlamps with dynamic auto leveling

Dual-swivel Adaptive Front Lighting System (AFS)

Headlamp washers (LS 460 L)

Daytime running lights

Integrated foglamps

LED taillamps

Water-repellent front-door glass

Variable intermittent windshield wipers with mist cycle

Rear window defogger with auto-off timer

Power-adjustable, auto-folding outside mirrors with defoggers, puddle lamps and auto tilt-down in reverse

Vehicle theft-deterrent and engine immobilizer system

Emergency interior trunk release

First aid kit

Tool kit

DISCLAIMERS

1. The Advanced Parking Guidance System requires driver brake control. Always look around outside the vehicle and use mirrors to confirm clearance.

2. Ratings achieved using the required premium unleaded gasoline with an octane rating of 91 or higher. If premium fuel is not used, performance will decrease.

3. Performance figures are for comparison only and were obtained with prototype vehicles by professional drivers using special safety equipment and procedures. Do not attempt.

4. All the vehicle's airbag systems are Supplemental Restraint Systems (SRS). The driver's and front passenger's airbags and knee airbag(s) are designed to inflate in severe (usually frontal) collisions where the magnitude and duration of the forward deceleration of the vehicle exceed the design threshold level. The side airbags and side curtain airbags are designed to inflate in certain types of severe side-impact collisions. In all other accidents, the airbags will not inflate. To decrease the risk of injury from an inflating airbag, always wear seatbelts, sit upright in the middle of the seat as far back as possible from the airbag modules and do not lean against the door. Do not put objects in front of an airbag or around the seatback. Do not use a rearward-facing child seat in any front passenger seat. The force of an inflating airbag SRS may cause serious injury or death. Please see your Owner's Manual for further instructions. Vehicle complies with "advanced airbag" requirements of FMVSS 208.

5. Vehicle Stability Control (VSC) and Vehicle Dynamics Integrated Management (VDIM) are electronic systems designed to help the driver maintain vehicle control under adverse conditions. They are not substitutes for safe driving practices. Factors including speed, road conditions and driver steering input can all affect whether VSC and VDIM will be effective in preventing a loss of control. Please see your Owner's Manual for further details.

6. The SmartAccess system may interfere with some pacemakers or cardiac defibrillators. If you have one of these medical devices, please talk to your doctor to see if you should deactivate this system.

7. Brake Assist is designed to help the driver take full advantage of the benefits of ABS. It is not a substitute for safe driving practices. Braking effectiveness also depends on proper brake-system maintenance and tire and road conditions.

8. The Pre-Collision System is designed to help reduce the crash speed and damage in certain frontal collisions only. It is not a collision avoidance system and is not a substitute for safe and attentive driving. System effectiveness depends on many factors, such as speed, driver input and road conditions. See your Owner's Manual for further information.

9. Legrest may not fully recline based on height of rear-seat passenger.

10. Mark Levinson is a registered trademark of Harman International Industries, Inc.

11. Continuous average power, all channels driven, at 0.1% THD, 20-20,000 Hz.

12. Functioning XM[®] Satellite Radio requires a compatible receiver and monthly service fee. See your Lexus dealer for further details. Reception of the satellite signal may vary depending on location. All fees and programming subject to change. Subscriptions subject to the terms and conditions available at www.xmradio.com. Available only in the 48 contiguous United States.

13. The Navigation System is designed to assist in locating an address or point of interest. Navigation Real-Time Traffic/Dynamic Route Guidance requires a monthly service fee and is designed to provide real-time traffic or alternative routes of travel. Discrepancies may be encountered between the system and your actual location. Road system changes may affect the accuracy of the information provided. Rely on your common sense to decide whether to follow a specified route. Detailed coverage not available in every city or roadway. Periodic updates available at an additional cost. See your Navigation System Owner's Manual for further details.

14. The Bluetooth[®] technology phones listed on lexus.com have been tested for compatibility with Lexus vehicles. Performance will vary based on phone software version, coverage and your wireless carrier. Phones are warranted by their manufacturer, not Lexus.

15. High-friction brakes are available with the Touring Package only and require periodic inspection and measurement as outlined in the Warranty and Services Guide. The pads and rotors are expected to experience greater wear than conventional brakes. Pad life may be less than 20,000 miles, and brake rotor life may be less than 50,000 miles, depending on driving conditions.

16. The backup camera, available only with the Navigation System, does not provide a comprehensive view of the rear area of the vehicle. You should also look around outside your vehicle and use your mirrors to confirm rearward clearance. Cold weather will limit effectiveness and view may become cloudy.

17. If legrest is in use, seating capacity could be reduced from four to three.

18. 18- or 19-in tires are expected to experience greater tire wear than conventional tires. Tire life may be substantially less than 15,000 miles, depending on driving conditions.

19. Do not change the OEM wheel size (19-in for Touring Model, 18-in for all others). Using other than the OEM wheel size could cause damage to the vehicle. If you replace the wheels, be sure they are the same size as the original wheels.

20. Dynamic Radar Cruise Control was designed to assist the driver and is not a substitute for safe and attentive driving practices. Please see your Owner's Manual for important cautions and instructions.

21. Contact with the Lexus Link Call Center is limited by cellular connection availability and reception of GPS satellite signals, so sometimes you may be unable to contact the Call Center or receive emergency service support. Lexus Link system includes one year Safe & Sound service. Enrollment and Subscription Service Agreement required. Additional service packages are available for additional charges.

22. Headphones are for passenger use only. Do not use while operating vehicle.

23. 2007 preliminary mpg estimates determined by Lexus. EPA mileage estimates not available at time of printing. Actual mileage may vary.

24. The Lexus Tire Pressure Monitor alerts the driver when tire pressure is critically low. For optimal tire wear and performance, tire pressure should be checked regularly with a gauge; do not rely solely on the monitor system. See your Owner's Manual for details.

WARRANTY

Four-year/50,000-mile Lexus Limited Warranty. Six-year/70,000-mile Powertrain Warranty. Six-year/unlimited-mileage Corrosion Perforation Warranty. All warranties with zero deductible. See the LS Warranty and Services Guide at your Lexus dealer for details.

GAS + ELECTRICITY = FORCE OF NATURE

*High-Speed Film
Los Angeles, 2007*

Coming soon: a vehicle that will earn the respect of the road as well as every single automobile aficionado who drives it.

The LS 600h L is a gloriously elegant, long-wheelbase sedan showcasing an astonishing 430+²-horsepower hybrid engine.

By giving more to the driver and taking less from the world, it will be, in every way, the most anticipated Lexus ever built.

And entirely worth the wait. Available Spring 2007.



LS 600h L

5.0-liter V8 engine

Electric-drive motor

430+ Total System Horsepower²

Direct and port injection

Dual Variable Valve Timing with intelligence (VVT-iE)

Super Ultra-Low Emission Vehicle (SULEV)

Electronically controlled Continuously Variable Transmission (ECVT)

All-wheel drive

Vehicle Dynamics Integrated Management (VDIM)⁵

Adaptive Variable Air Suspension (AVS)

Variable Gear-Ratio Steering (VGRS)

Mark Levinson Reference Surround Sound Audio System¹⁰

Voice-activated Hard Disc Drive (HDD) Navigation System¹³

Bluetooth[®] technology¹⁴

Backup camera¹⁶

XM Satellite Radio¹² and XM NavTraffic¹³ with real-time traffic updates

Available Advanced Parking Guidance System¹



THE NEW PLATINUM STANDARD Introducing the All-New 2007 LS

7



WORLD'S FIRST EIGHT-SPEED AUTOMATIC TRANSMISSION Power 4



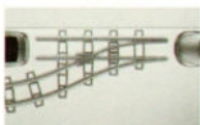
SAFETY: THE LEXUS PERSPECTIVE Safety

6



LIFE ON THE INSIDE Interior Luxury

8



FORWARD. REVERSE. AND NOW PARALLEL. Advanced Parking Guidance System 12



ENCORE Mark Levinson Reference Surround Sound Audio System

14



TRAFFIC MANEUVERS Dynamic Route Guidance

16



MULTIPLIED POWER Engine Innovations

18



FORECAST: SUBLIME Infrared Temperature Sensor/Options and Packages

20



GAS + ELECTRICITY = FORCE OF NATURE The LS600hL

24

Specifications, features, equipment, technical data, performance figures, options, and color and trim are based upon information available at time of printing, are subject to change without notice, are for mainland U.S.A. vehicles and may differ in the state of Hawaii, Puerto Rico, the U.S. Virgin Islands and in other regions. Some vehicles shown with available equipment. Optional equipment listed may not be available separately or in all regions. See your Lexus dealer for details. Lexus reminds you to wear seatbelts, secure children in rear seat, obey all traffic laws and drive responsibly. For more information, call 800-USA-LEXUS (872-5398) or visit lexus.com. To learn more about your financing options, contact your Lexus dealer or call Lexus Financial Services at 800-874-7050.



THE PASSIONATE PURSUIT OF PERFECTION.